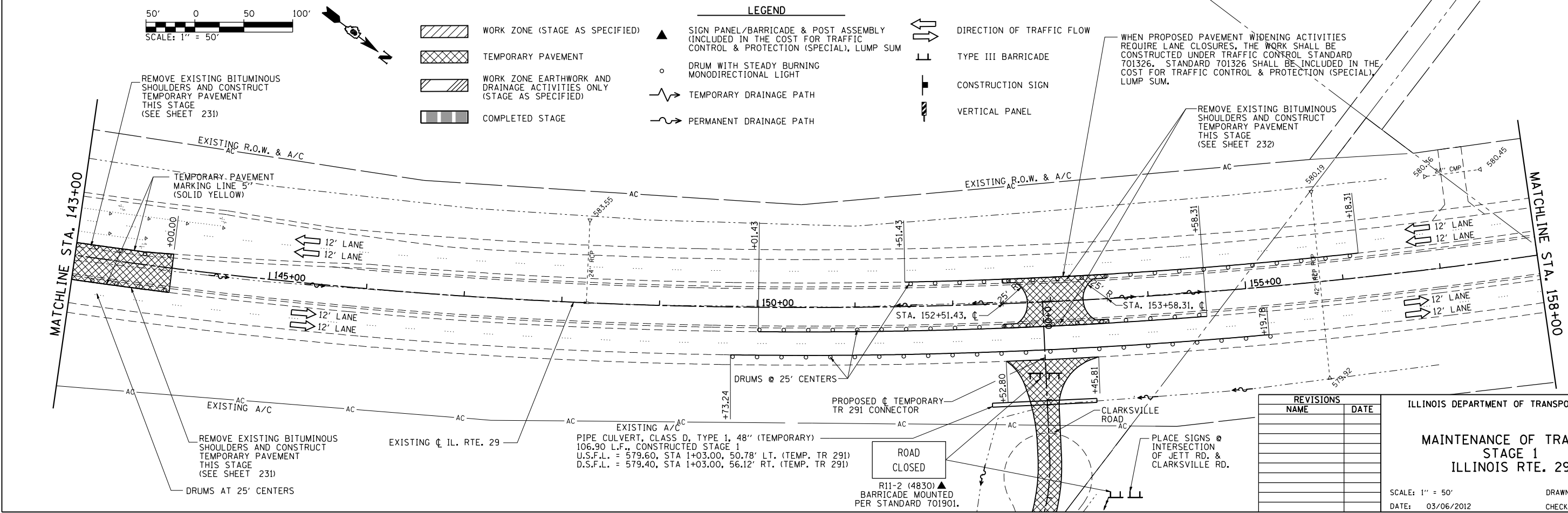
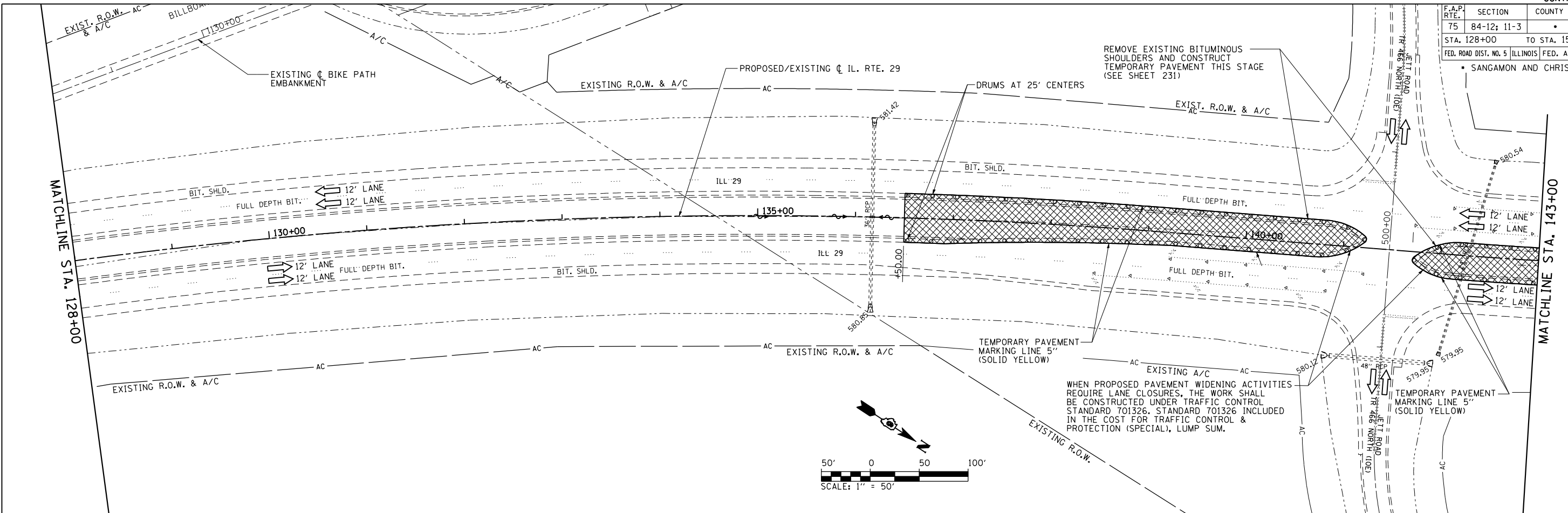


F.A.P. RTE.	SECTION	COUNTY	TOTAL SHEETS	SHEET NO.
75	84-12: 11-3	•	729	192
STA. 128+00		TO STA. 158+00		
FED. ROAD DIST. NO. 5 ILLINOIS FED. AID PROJECT				
• SANGAMON AND CHRISTIAN				



LEGEND

	WORK ZONE (STAGE AS SPECIFIED)		SIGN PANEL/BARRICADE & POST ASSEMBLY (INCLUDED IN THE COST FOR TRAFFIC CONTROL & PROTECTION (SPECIAL), LUMP SUM)		DIRECTION OF TRAFFIC FLOW
	TEMPORARY PAVEMENT		DRUM WITH STEADY BURNING MONODIRECTIONAL LIGHT		TYPE III BARRICADE
	WORK ZONE EARTHWORK AND DRAINAGE ACTIVITIES ONLY (STAGE AS SPECIFIED)		TEMPORARY DRAINAGE PATH		CONSTRUCTION SIGN
	COMPLETED STAGE		PERMANENT DRAINAGE PATH		VERTICAL PANEL

REVISIONS	
NAME	DATE

ILLINOIS DEPARTMENT OF TRANSPORTATION

**MAINTENANCE OF TRAFFIC
STAGE 1
ILLINOIS RTE. 29**

SCALE: 1" = 50'
DATE: 03/06/2012

DRAWN BY: R.A.H.
CHECKED BY: J.M.M.

Defaul L:\DOT\030601\Draw\Sheets\12829-158-1\12829-158-1\12829-158-1.dwg
 3/6/2012