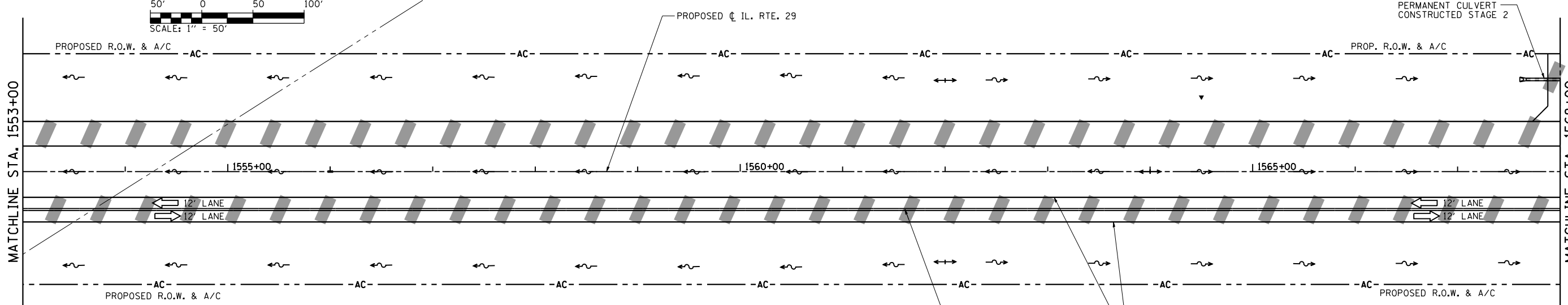
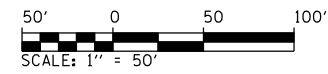
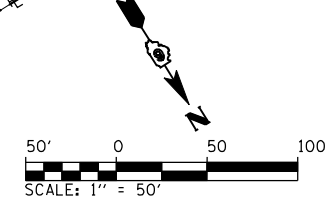
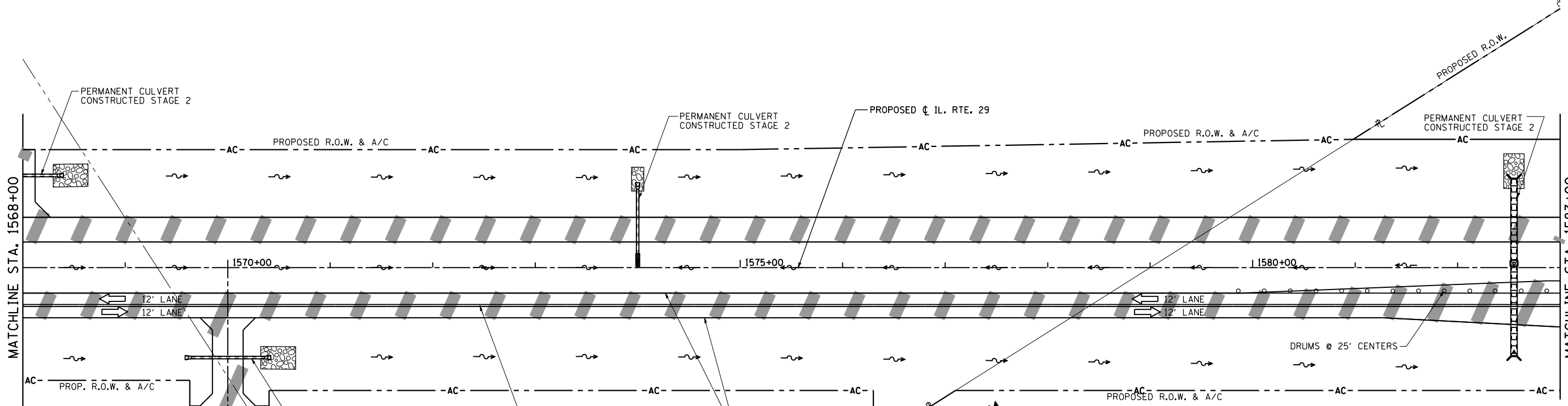


F.A.P. RTE.	SECTION	COUNTY	TOTAL SHEETS	SHEET NO.
75	84-12; 11-3	•	729	218
STA. 1553+00		TO STA. 1583+00		
FED. ROAD DIST. NO. 5 ILLINOIS FED. AID PROJECT				
• SANGAMON AND CHRISTIAN				



- LEGEND**
- DIRECTION OF TRAFFIC FLOW
 - TYPE III BARRICADE
 - WORK ZONE (STAGE AS SPECIFIED)
 - TEMPORARY PAVEMENT
 - WORK ZONE EARTHWORK AND DRAINAGE ACTIVITIES ONLY (STAGE AS SPECIFIED)
 - COMPLETED STAGE
 - SIGN PANEL/BARRICADE & POST ASSEMBLY (INCLUDED IN THE COST FOR TRAFFIC CONTROL & PROTECTION (SPECIAL), LUMP SUM)
 - DRUM WITH STEADY BURNING MONODIRECTIONAL LIGHT
 - CONSTRUCTION SIGN
 - VERTICAL PANEL
 - TEMPORARY DRAINAGE PATH
 - PERMANENT DRAINAGE PATH



REVISIONS	
NAME	DATE

ILLINOIS DEPARTMENT OF TRANSPORTATION

**MAINTENANCE OF TRAFFIC
STAGE 3
ILLINOIS RTE. 29**

SCALE: 1" = 50'

DATE: 03/06/2012

DRAWN BY: R.A.H.
CHECKED BY: J.M.M.

Default: i:\dot\030660\draw\Sheets\0672829-sht1-MOT\STG3-008.dgn 3/6/2012