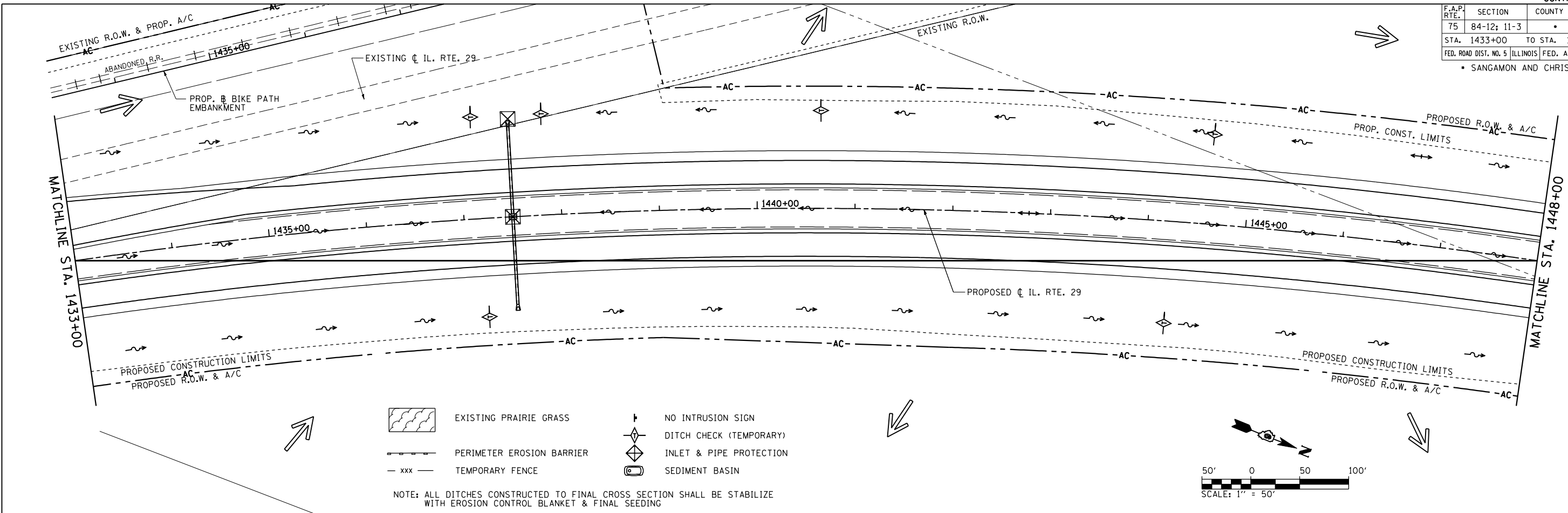
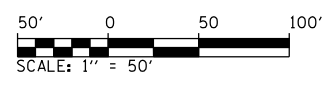
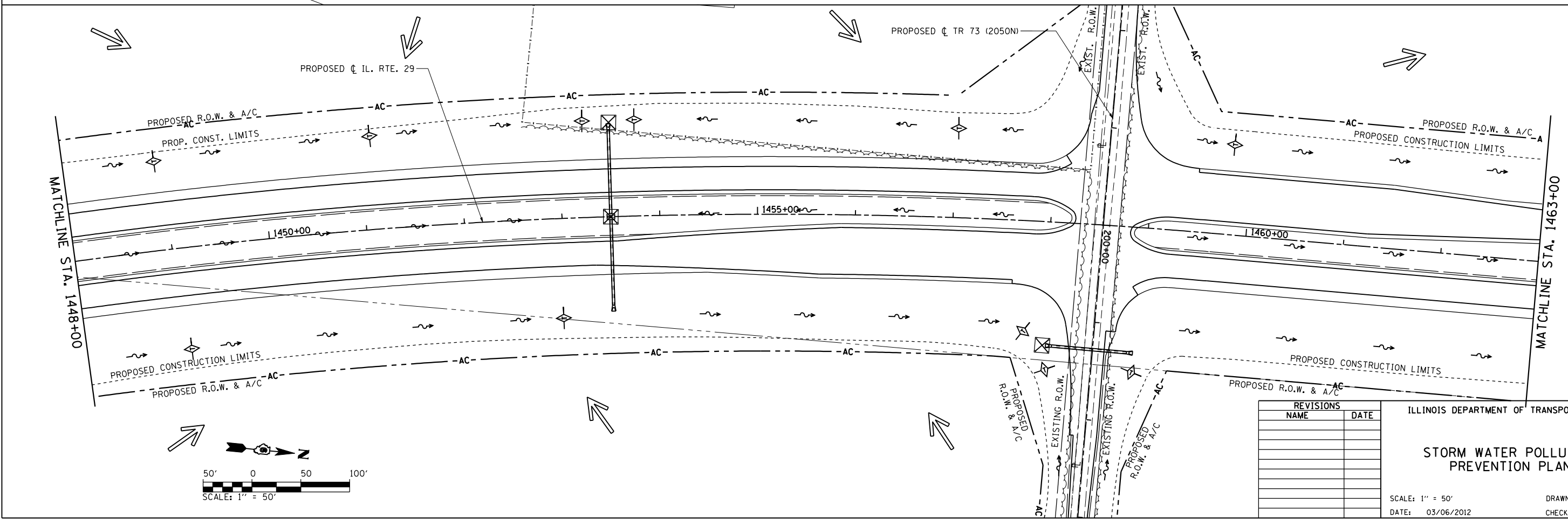
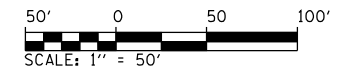


F.A.P. RTE.	SECTION	COUNTY	TOTAL SHEETS	SHEET NO.
75	84-12; 11-3		729	237
STA. 1433+00		TO STA. 1463+00		
FED. ROAD DIST. NO. 5 ILLINOIS FED. AID PROJECT				
• SANGAMON AND CHRISTIAN				



- EXISTING PRAIRIE GRASS
- PERIMETER EROSION BARRIER
- TEMPORARY FENCE
- NO INTRUSION SIGN
- DITCH CHECK (TEMPORARY)
- INLET & PIPE PROTECTION
- SEDIMENT BASIN

NOTE: ALL DITCHES CONSTRUCTED TO FINAL CROSS SECTION SHALL BE STABILIZE WITH EROSION CONTROL BLANKET & FINAL SEEDING



REVISIONS	
NAME	DATE

ILLINOIS DEPARTMENT OF TRANSPORTATION

STORM WATER POLLUTION PREVENTION PLAN

SCALE: 1" = 50'

DATE: 03/06/2012

DRAWN BY: R.A.H.
CHECKED BY: J.M.M.

SWPPP_002
L:\DOT\030601\Drawings\Sheets\1463-1472\SWPPP_002.dgn
3/6/2012