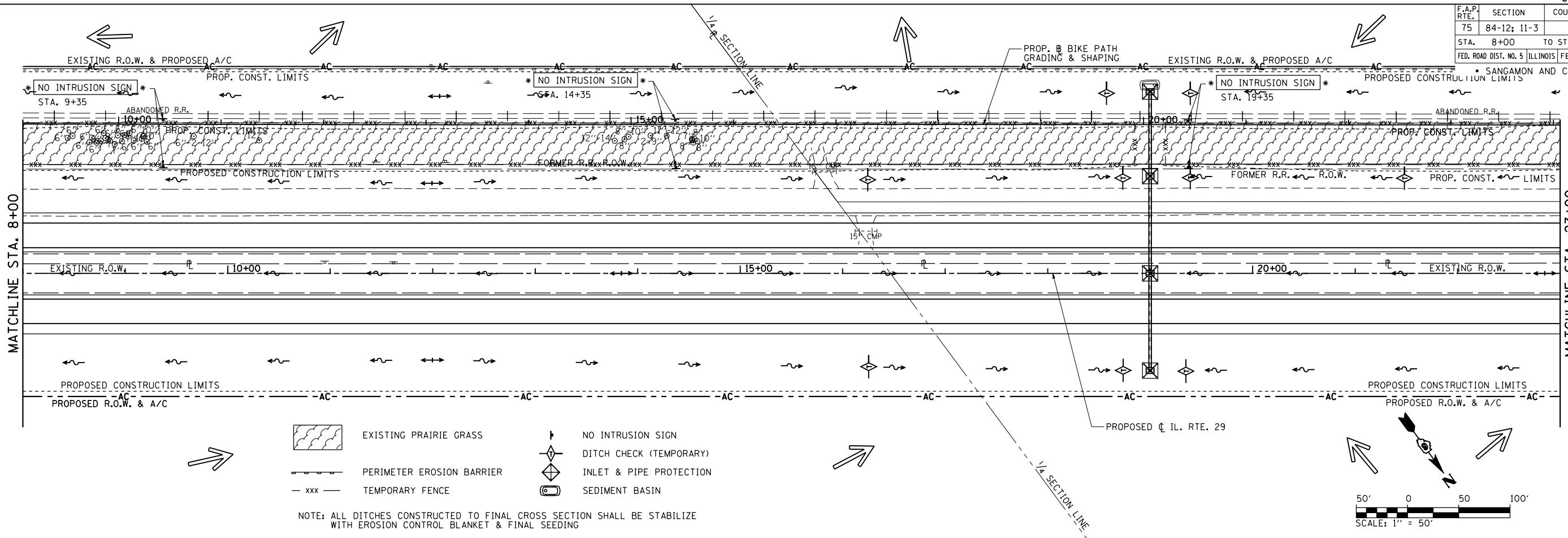
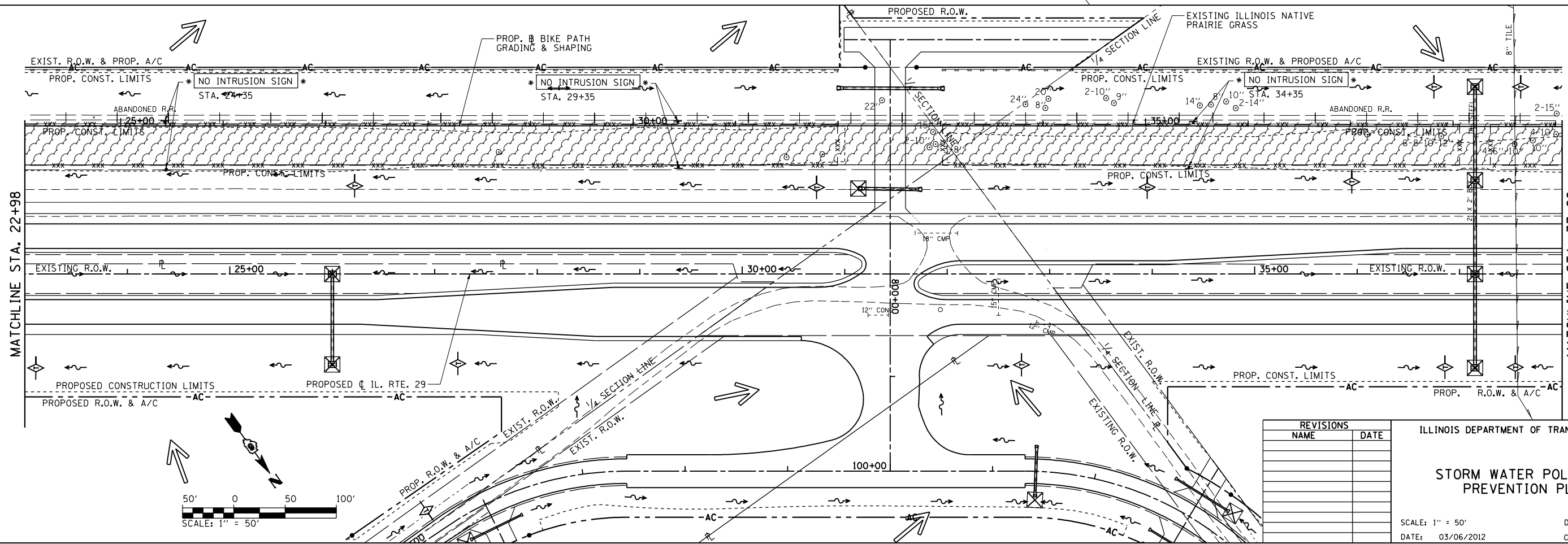


F.A.P. RTE.	SECTION	COUNTY	TOTAL SHEETS	SHEET NO.
75	84-12: 11-3		729	245
STA. 8+00 TO STA. 38+00		SANGAMON AND CHRISTIAN		
FED. ROAD DIST. NO. 5 ILLINOIS FED. AID PROJECT				



- EXISTING PRAIRIE GRASS
- PERIMETER EROSION BARRIER
- TEMPORARY FENCE
- NO INTRUSION SIGN
- DITCH CHECK (TEMPORARY)
- INLET & PIPE PROTECTION
- SEDIMENT BASIN

NOTE: ALL DITCHES CONSTRUCTED TO FINAL CROSS SECTION SHALL BE STABILIZE WITH EROSION CONTROL BLANKET & FINAL SEEDING



REVISIONS	
NAME	DATE

ILLINOIS DEPARTMENT OF TRANSPORTATION

STORM WATER POLLUTION PREVENTION PLAN

SCALE: 1" = 50'

DATE: 03/06/2012

DRAWN BY: R.A.H.
CHECKED BY: J.M.M.

SWPPP_00
L:\DOT\030601\Draw_Sheets\1672829-sht-SWPPP_00.dwg
3/6/2012