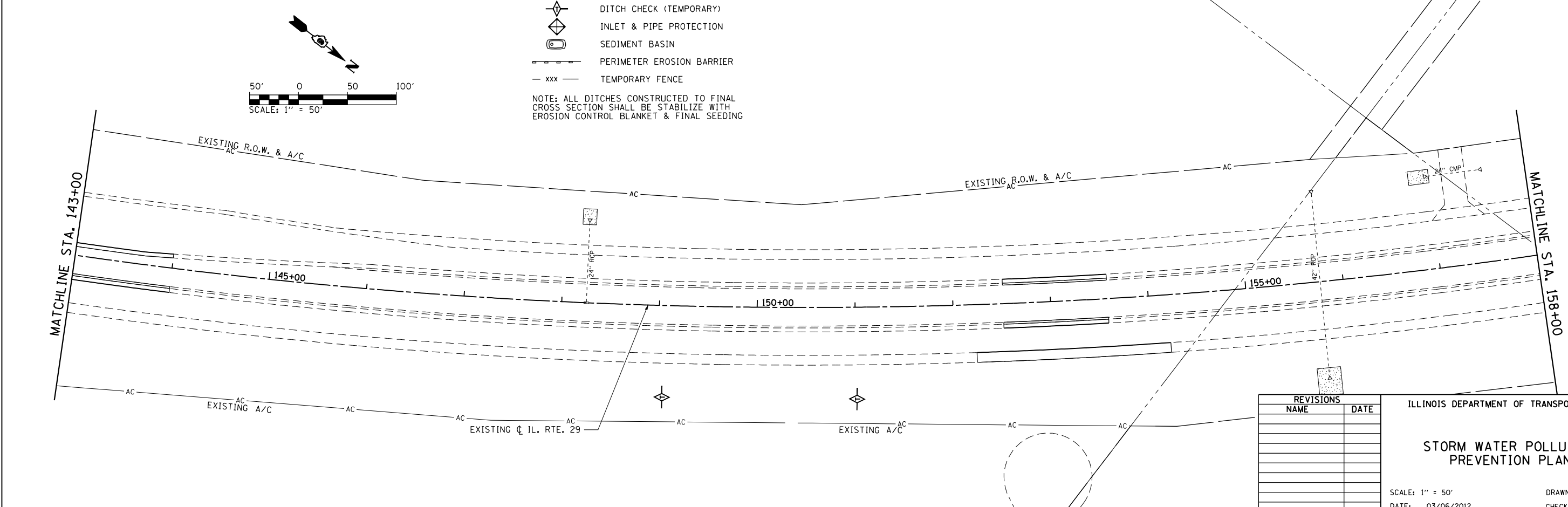
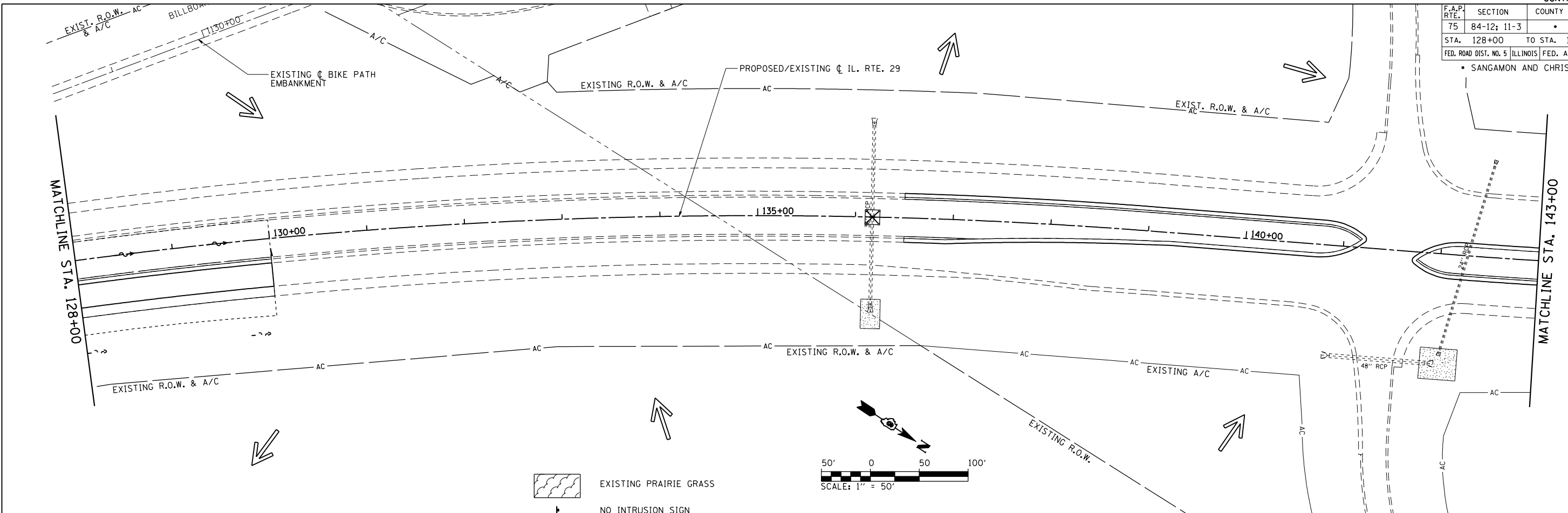


F.A.P. RTE.	SECTION	COUNTY	TOTAL SHEETS	SHEET NO.
75	84-12: 11-3		729	249
STA. 128+00 TO STA. 158+00		FED. ROAD DIST. NO. 5 ILLINOIS FED. AID PROJECT		
• SANGAMON AND CHRISTIAN				



- EXISTING PRAIRIE GRASS
  - NO INTRUSION SIGN
  - DITCH CHECK (TEMPORARY)
  - INLET & PIPE PROTECTION
  - SEDIMENT BASIN
  - PERIMETER EROSION BARRIER
  - TEMPORARY FENCE
- NOTE: ALL DITCHES CONSTRUCTED TO FINAL CROSS SECTION SHALL BE STABILIZE WITH EROSION CONTROL BLANKET & FINAL SEEDING

REVISIONS	
NAME	DATE

ILLINOIS DEPARTMENT OF TRANSPORTATION

**STORM WATER POLLUTION PREVENTION PLAN**

SCALE: 1" = 50'

DATE: 03/06/2012

DRAWN BY: R.A.H.  
CHECKED BY: J.M.M.

SWPPP\_014  
L:\DOT\030601\Draw\Drawings\030601\Draw\Drawings\SWPPP\_014.dgn  
3/6/2012