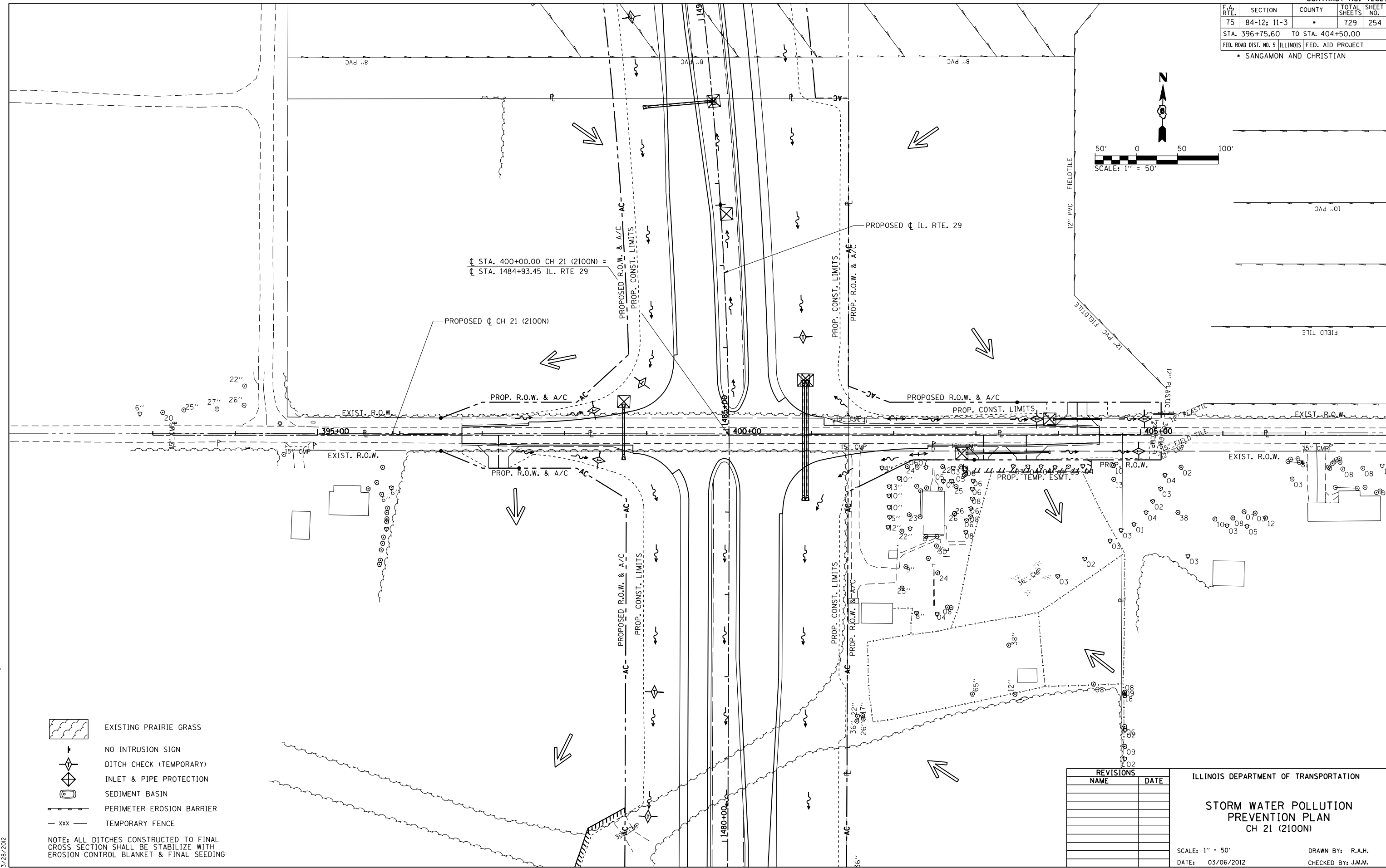
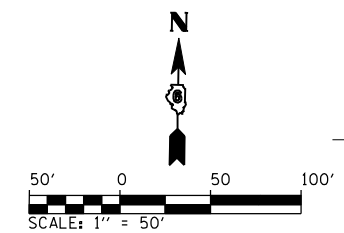


F.A. RTE.	SECTION	COUNTY	TOTAL SHEETS	SHEET NO.
75	84-12: 11-3	•	729	254
STA. 396+75.60 TO STA. 404+50.00		FED. ROAD DIST. NO. 5 ILLINOIS FED. AID PROJECT		
• SANGAMON AND CHRISTIAN				



- EXISTING PRAIRIE GRASS
- NO INTRUSION SIGN
- DITCH CHECK (TEMPORARY)
- INLET & PIPE PROTECTION
- SEDIMENT BASIN
- PERIMETER EROSION BARRIER
- TEMPORARY FENCE

NOTE: ALL DITCHES CONSTRUCTED TO FINAL CROSS SECTION SHALL BE STABILIZE WITH EROSION CONTROL BLANKET & FINAL SEEDING

REVISIONS	
NAME	DATE

ILLINOIS DEPARTMENT OF TRANSPORTATION

STORM WATER POLLUTION PREVENTION PLAN
CH 21 (2100N)

SCALE: 1" = 50'
DATE: 03/06/2012

DRAWN BY: R.A.H.
CHECKED BY: J.M.M.

SWPPP_09 L:\DOT\030601\draw_sheets\0672829-sht-SWPPP_019(ch21).dgn 3/28/2012