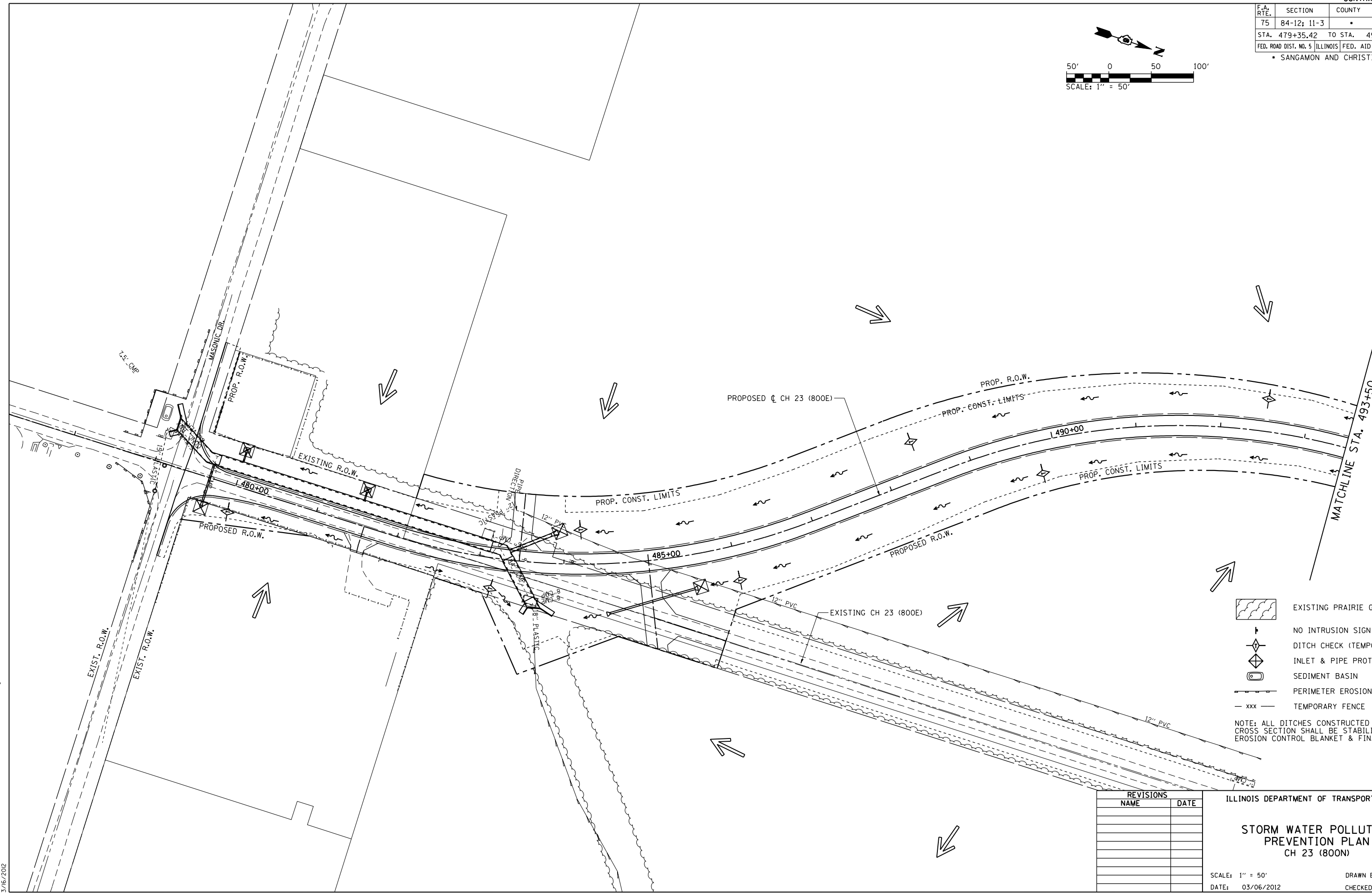
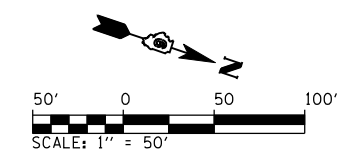


F.A. RTE.	SECTION	COUNTY	TOTAL SHEETS	SHEET NO.
75	84-12; 11-3	•	729	255
STA. 479+35.42 TO STA. 493+50				
FED. ROAD DIST. NO. 5 ILLINOIS FED. AID PROJECT				
• SANGAMON AND CHRISTIAN				



- EXISTING PRAIRIE GRASS
  - NO INTRUSION SIGN
  - DITCH CHECK (TEMPORARY)
  - INLET & PIPE PROTECTION
  - SEDIMENT BASIN
  - PERIMETER EROSION BARRIER
  - TEMPORARY FENCE
- NOTE: ALL DITCHES CONSTRUCTED TO FINAL CROSS SECTION SHALL BE STABILIZE WITH EROSION CONTROL BLANKET & FINAL SEEDING

REVISIONS	
NAME	DATE

ILLINOIS DEPARTMENT OF TRANSPORTATION

**STORM WATER POLLUTION PREVENTION PLAN**  
CH 23 (800N)

SCALE: 1" = 50'  
DATE: 03/06/2012

DRAWN BY: R.A.H.  
CHECKED BY: J.M.M.

SWPPP\_020  
L:\DOT\0306601\Draw\Drawings\SWPPP\_020\CH23.dgn  
3/6/2012