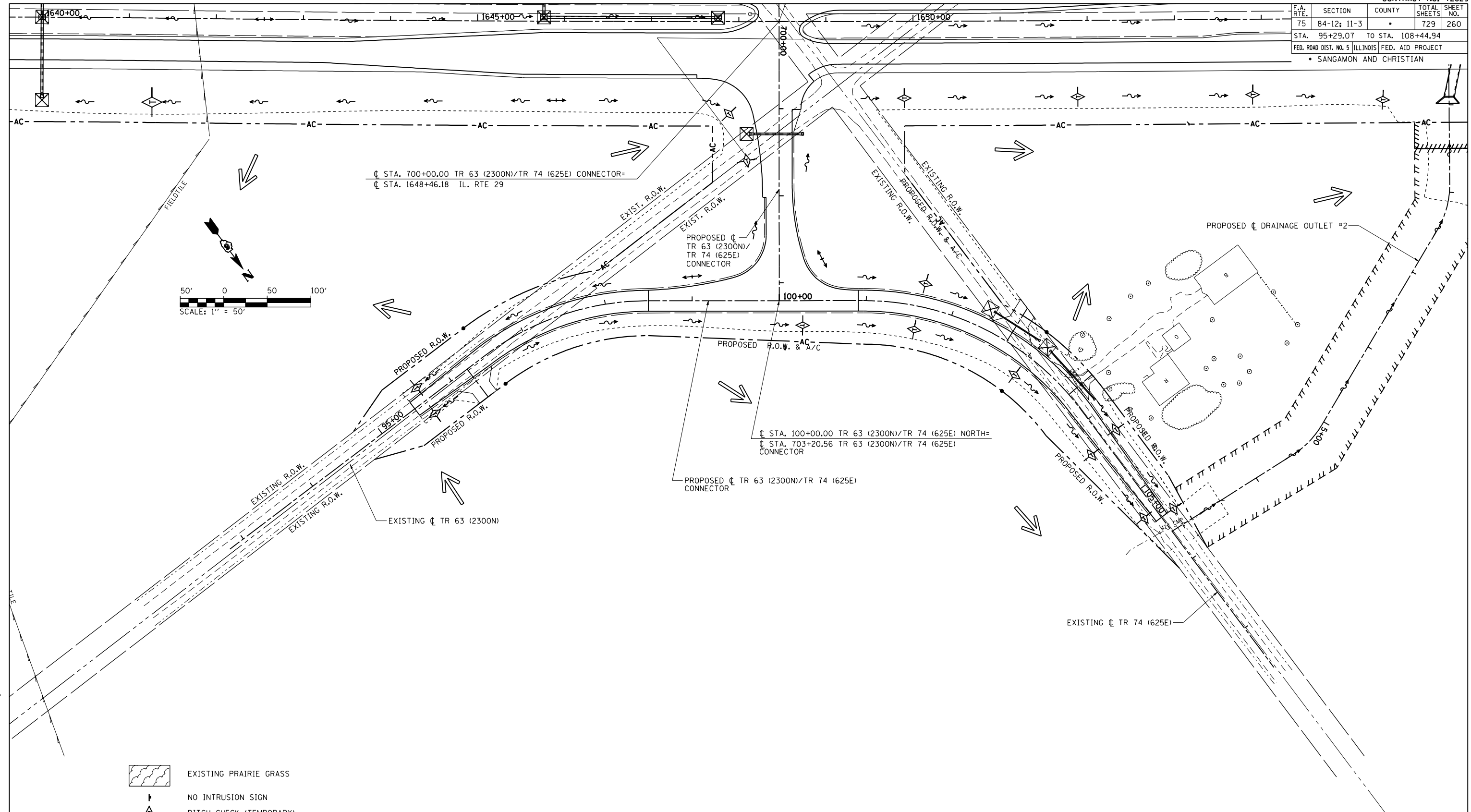


F.A. RTE.	SECTION	COUNTY	TOTAL SHEETS	SHEET NO.
75	84-12: 11-3		729	260
STA. 95+29.07 TO STA. 108+44.94				
FED. ROAD DIST. NO. 5 ILLINOIS FED. AID PROJECT				
• SANGAMON AND CHRISTIAN				



- EXISTING PRAIRIE GRASS
- NO INTRUSION SIGN
- DITCH CHECK (TEMPORARY)
- INLET & PIPE PROTECTION
- SEDIMENT BASIN
- PERIMETER EROSION BARRIER
- TEMPORARY FENCE

NOTE: ALL DITCHES CONSTRUCTED TO FINAL CROSS SECTION SHALL BE STABILIZE WITH EROSION CONTROL BLANKET & FINAL SEEDING

REVISIONS	
NAME	DATE

ILLINOIS DEPARTMENT OF TRANSPORTATION

**STORM WATER POLLUTION PREVENTION PLAN**  
 TR 63 (2300 N) - TR 74 (625 E) NORTH

SCALE: 1" = 50'  
 DATE: 03/06/2012

DRAWN BY: R.A.H.  
 CHECKED BY: J.M.M.

SWPPP\_025  
 L:\DOT\030601\Draw\Sheets\030601\Draw\SWPPP\_024\TR6374.dgn  
 3/28/2012