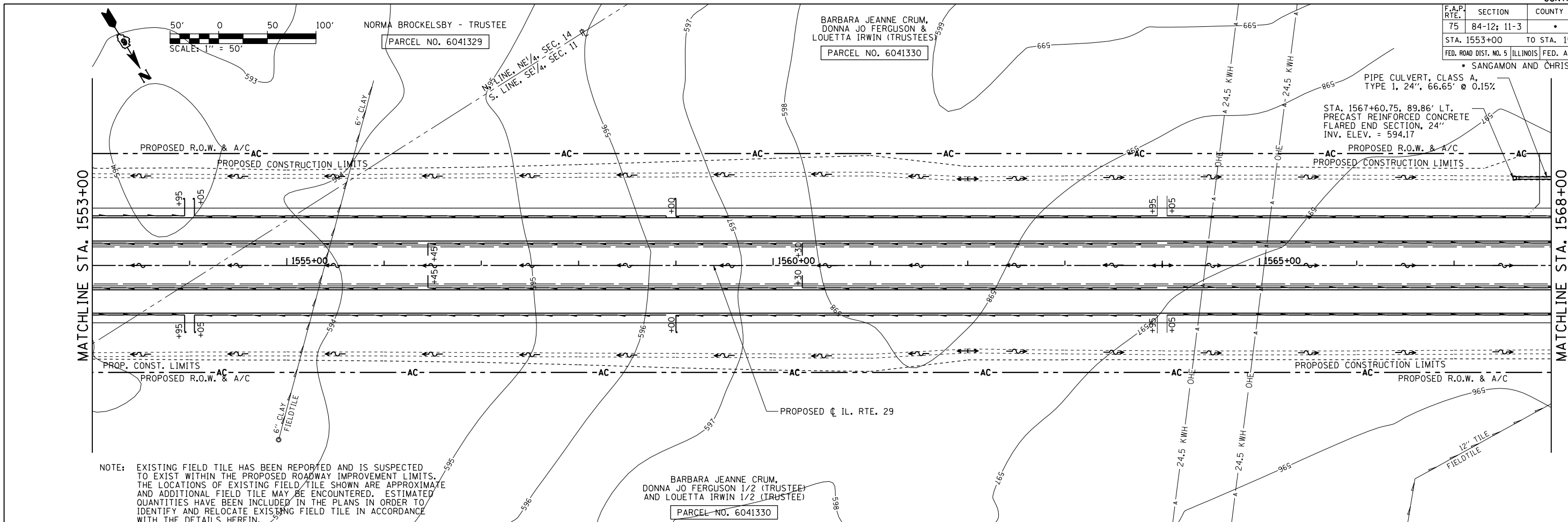


F.A.P. RTE.	SECTION	COUNTY	TOTAL SHEETS	SHEET NO.
75	84-12: 11-3		729	273
STA. 1553+00		TO STA. 1568+00		
FED. ROAD DIST. NO. 5 ILLINOIS FED. AID PROJECT				
* SANGAMON AND CHRISTIAN				

PLAN	SURVEYED	BY	DATE
NOTE BOOK NO.	PLotted		
	Checked		
	By		
	Of		
	Way		
	Checked		
	By		
	File		
	Name		

PROFILE	SURVEYED	BY	DATE
NOTE BOOK NO.	Plotted		
	Checked		
	By		
	Of		
	Structure		
	Notations		
	Checked		
	By		

D:\cadd\pnc001\15601\15601.dwg sheet s.d672829-sht1-DrainPnc001.dgn
3/16/2012



NOTE: EXISTING FIELD TILE HAS BEEN REPORTED AND IS SUSPECTED TO EXIST WITHIN THE PROPOSED ROADWAY IMPROVEMENT LIMITS. THE LOCATIONS OF EXISTING FIELD TILE SHOWN ARE APPROXIMATE AND ADDITIONAL FIELD TILE MAY BE ENCOUNTERED. ESTIMATED QUANTITIES HAVE BEEN INCLUDED IN THE PLANS IN ORDER TO IDENTIFY AND RELOCATE EXISTING FIELD TILE IN ACCORDANCE WITH THE DETAILS HEREIN.

