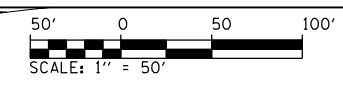


F.A.P. RTE.	SECTION	COUNTY	TOTAL SHEETS	SHEET NO.
75	84-12: 11-3		729	274

STA. 1568+00 TO STA. 1583+00

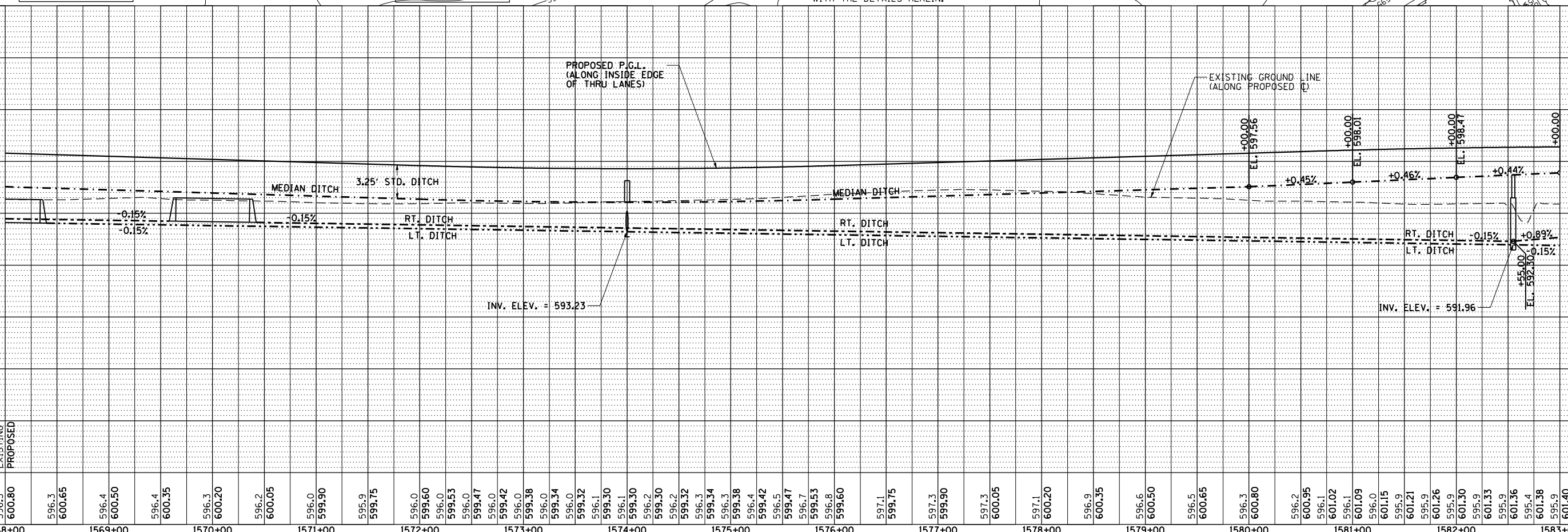
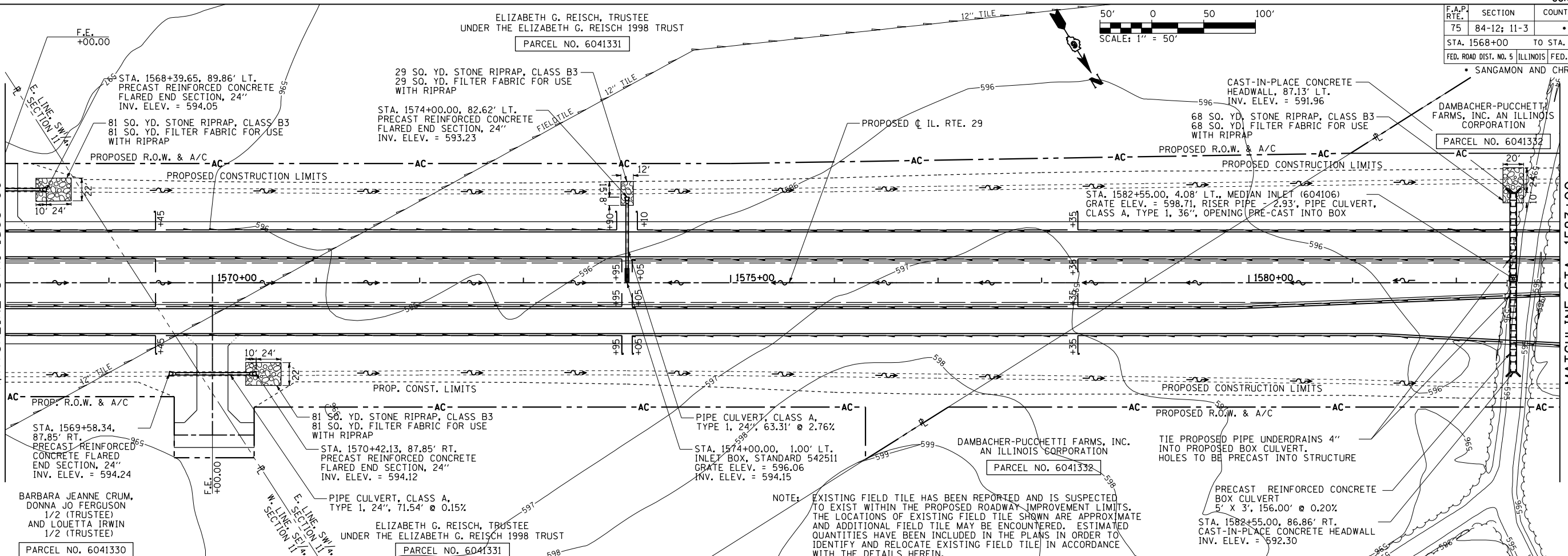
FED. ROAD DIST. NO. 5 ILLINOIS FED. AID PROJECT

SANGAMON AND CHRISTIAN



ELIZABETH G. REISCH, TRUSTEE
UNDER THE ELIZABETH G. REISCH 1998 TRUST
PARCEL NO. 6041331

PARCEL NO. 6041332
DAMBACHER-PUCCHETTI FARMS, INC. AN ILLINOIS CORPORATION



PLAN

DATE	BY

SURVEYED
 PLOTTED
 CHECKED
 RT. OF WAY CHECKED
 CAD FILE NAME NO.

PROFILE

DATE	BY

SURVEYED
 PLOTTED
 CHECKED
 B.M. NOTED
 STRUCTURE NOTATIONS CHKD
 NO.

D:\cadd\pnp\002
L:\001\1306601\dr-aw\sheet\5\672829-sht-DrainPnp001.dgn
3/16/2012