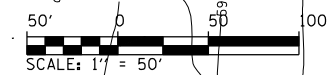
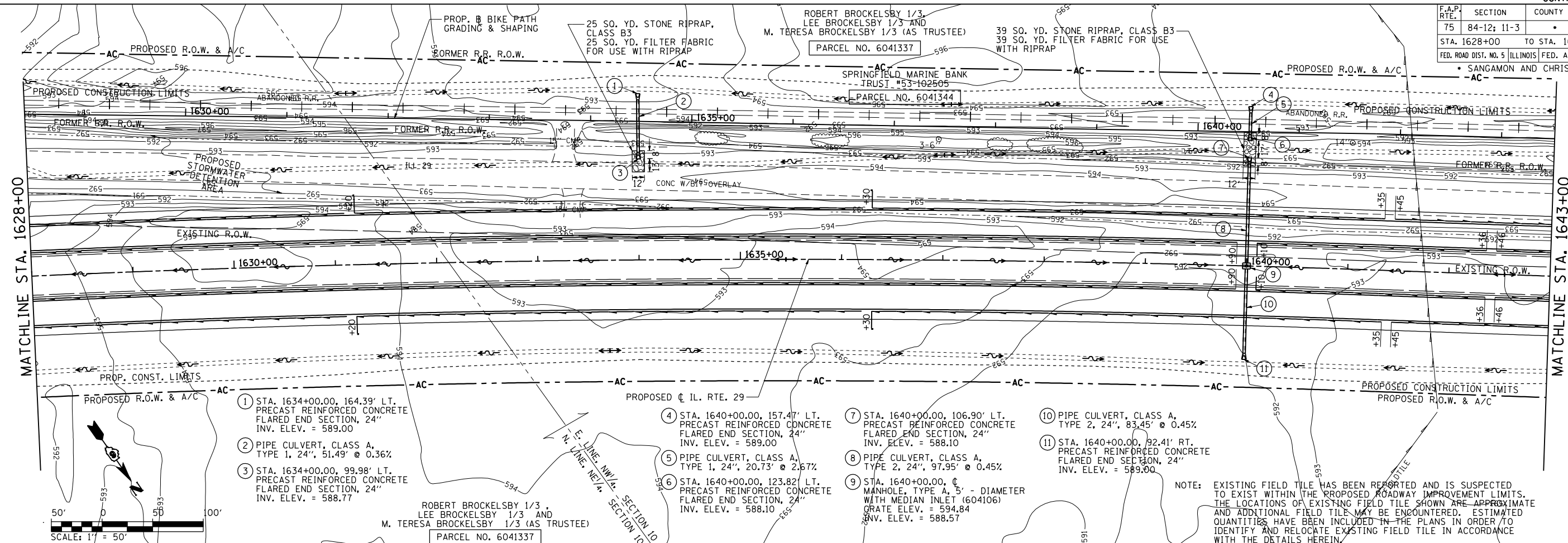


F.A.P. RTE.	SECTION	COUNTY	TOTAL SHEETS	SHEET NO.
75	84-12: 11-3		729	278
STA. 1628+00 TO STA. 1643+00				
FED. ROAD DIST. NO. 5 (ILLINOIS) FED. AID PROJECT				
SANGAMON AND CHRISTIAN				

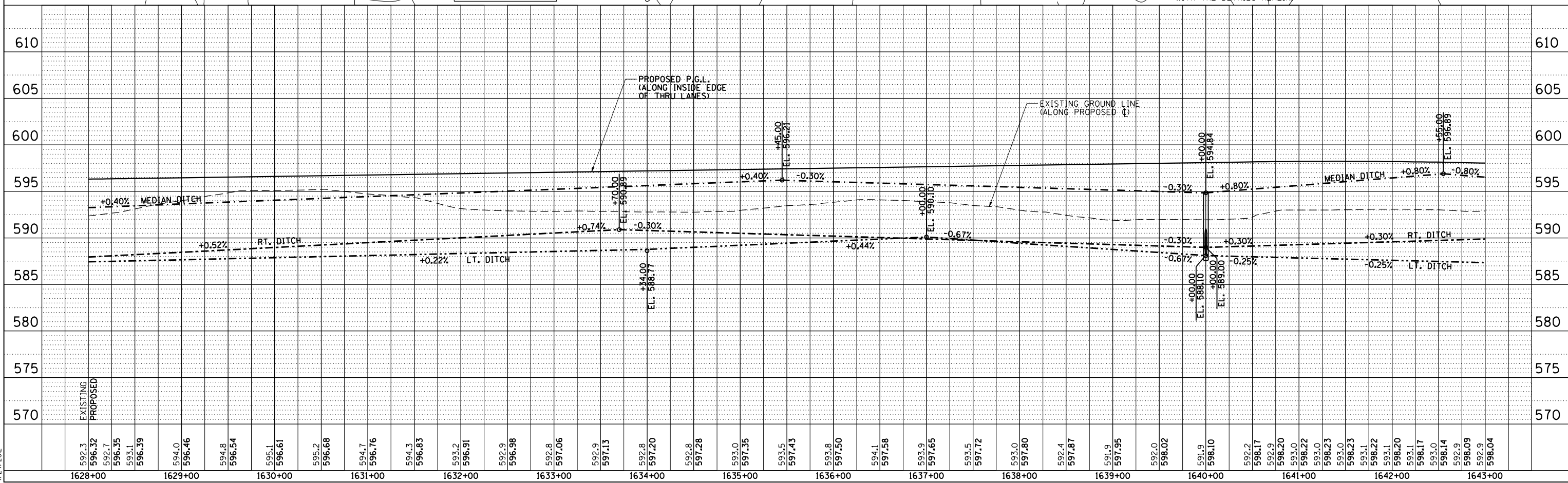
PLAN	SURVEYED	DATE
	BY	
	NOTED	
	FILED	
	NO.	

PROFILE	SURVEYED	DATE
	BY	
	NOTED	
	FILED	
	NO.	

D:\cadd\pnp006\1\Draw\Sheet\5.D672829-sht-DrainPnp004.dgn
4/24/2012



NOTE: EXISTING FIELD TILE HAS BEEN REPORTED AND IS SUSPECTED TO EXIST WITHIN THE PROPOSED ROADWAY IMPROVEMENT LIMITS. THE LOCATIONS OF EXISTING FIELD TILE SHOWN ARE APPROXIMATE AND ADDITIONAL FIELD TILE MAY BE ENCOUNTERED. ESTIMATED QUANTITIES HAVE BEEN INCLUDED IN THE PLANS IN ORDER TO IDENTIFY AND RELOCATE EXISTING FIELD TILE IN ACCORDANCE WITH THE DETAILS HEREIN.



DRAINAGE & UTILITY PLAN & PROFILE: IL. RTE 29 - STA. 1628+00 TO STA. 1643+00