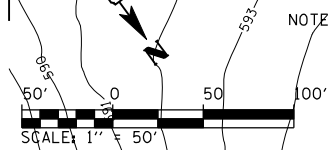
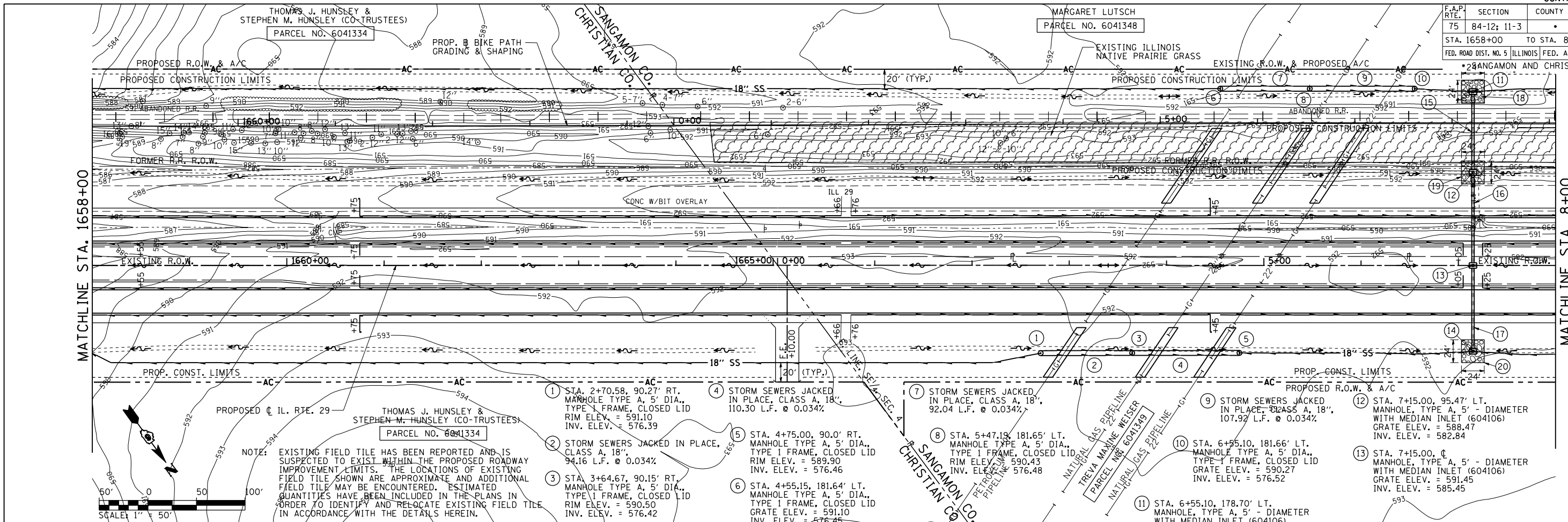


F.A.P. RTE.	SECTION	COUNTY	TOTAL SHEETS	SHEET NO.
75	84-12: 11-3		729	280
STA. 1658+00 TO STA. 8+00				
FED. ROAD DIST. NO. 5 ILLINOIS FED. AID PROJECT				
*SANGAMON AND CHRISTIAN				

PLAN	SURVEYED	DATE
	PLOTTED	
	CHECKED	
	BY	
	NO.	

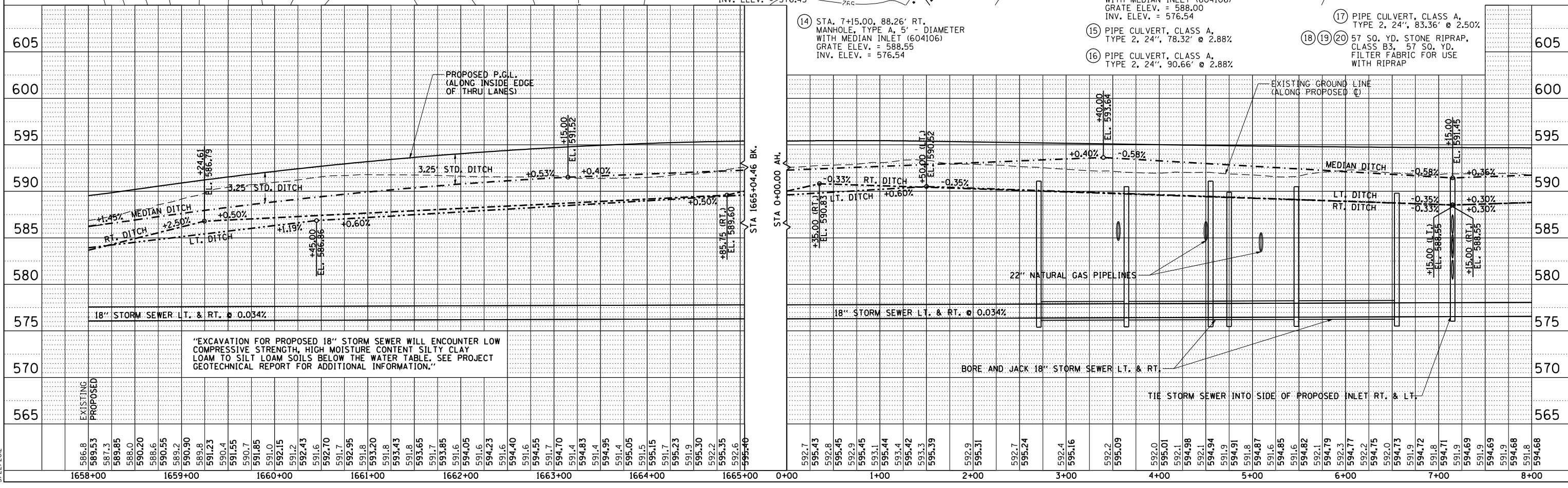
PROFILE	SURVEYED	DATE
	PLOTTED	
	CHECKED	
	BY	
	NO.	

Dr:\cadd\pnc008\1\DOT\130660\1\draw\sheet\5\672829-sht-DrainPnc004.dgn  
3/22/2012



NOTE: EXISTING FIELD TILE HAS BEEN REPORTED AND IS SUSPECTED TO EXIST WITHIN THE PROPOSED ROADWAY IMPROVEMENT LIMITS. THE LOCATIONS OF EXISTING FIELD TILE SHOWN ARE APPROXIMATE AND ADDITIONAL FIELD TILE MAY BE ENCOUNTERED. ESTIMATED QUANTITIES HAVE BEEN INCLUDED IN THE PLANS IN ORDER TO IDENTIFY AND RELOCATE EXISTING FIELD TILE IN ACCORDANCE WITH THE DETAILS HEREIN.

- 1 STA. 2+70.58, 90.27' RT. MANHOLE TYPE A, 5' DIA., TYPE 1 FRAME, CLOSED LID RIM ELEV. = 591.10 INV. ELEV. = 576.39
- 2 STORM SEWERS JACKED IN PLACE, CLASS A, 18" RIM ELEV. = 589.90 INV. ELEV. = 576.46
- 3 STA. 3+64.67, 90.15' RT. MANHOLE TYPE A, 5' DIA., TYPE 1 FRAME, CLOSED LID RIM ELEV. = 591.10 INV. ELEV. = 576.42
- 4 STORM SEWERS JACKED IN PLACE, CLASS A, 18" 110.30 L.F. @ 0.034%
- 5 STA. 4+75.00, 90.0' RT. MANHOLE TYPE A, 5' DIA., TYPE 1 FRAME, CLOSED LID RIM ELEV. = 589.90 INV. ELEV. = 576.46
- 6 STA. 4+55.15, 181.64' LT. MANHOLE TYPE A, 5' DIA., TYPE 1 FRAME, CLOSED LID GRATE ELEV. = 591.10 INV. ELEV. = 576.45
- 7 STORM SEWERS JACKED IN PLACE, CLASS A, 18" 92.04 L.F. @ 0.034%
- 8 STA. 5+47.19, 181.65' LT. MANHOLE TYPE A, 5' DIA., TYPE 1 FRAME, CLOSED LID RIM ELEV. = 590.43 INV. ELEV. = 576.48
- 9 STORM SEWERS JACKED IN PLACE, CLASS A, 18" 107.97 L.F. @ 0.034%
- 10 STA. 6+55.10, 181.66' LT. MANHOLE TYPE A, 5' DIA., TYPE 1 FRAME, CLOSED LID GRATE ELEV. = 590.27 INV. ELEV. = 576.52
- 11 STA. 6+55.10, 178.70' LT. MANHOLE, TYPE A, 5' - DIAMETER WITH MEDIAN INLET (604106) GRATE ELEV. = 588.00 INV. ELEV. = 576.54
- 12 STA. 7+15.00, 95.47' LT. MANHOLE, TYPE A, 5' - DIAMETER WITH MEDIAN INLET (604106) GRATE ELEV. = 588.47 INV. ELEV. = 582.84
- 13 STA. 7+15.00, 95.47' LT. MANHOLE, TYPE A, 5' - DIAMETER WITH MEDIAN INLET (604106) GRATE ELEV. = 591.45 INV. ELEV. = 585.45
- 14 STA. 7+15.00, 88.26' RT. MANHOLE, TYPE A, 5' - DIAMETER WITH MEDIAN INLET (604106) GRATE ELEV. = 588.55 INV. ELEV. = 576.54
- 15 PIPE CULVERT, CLASS A, TYPE 2, 24", 78.32' @ 2.88%
- 16 PIPE CULVERT, CLASS A, TYPE 2, 24", 90.66' @ 2.88%
- 17 PIPE CULVERT, CLASS A, TYPE 2, 24", 83.36' @ 2.50%
- 18 57 SQ. YD. STONE RIPRAP, CLASS B3, 57 SQ. YD. FILTER FABRIC FOR USE WITH RIPRAP
- 19
- 20



"EXCAVATION FOR PROPOSED 18" STORM SEWER WILL ENCOUNTER LOW COMPRESSIVE STRENGTH, HIGH MOISTURE CONTENT SILTY CLAY LOAM TO SILT LOAM SOILS BELOW THE WATER TABLE. SEE PROJECT GEOTECHNICAL REPORT FOR ADDITIONAL INFORMATION."