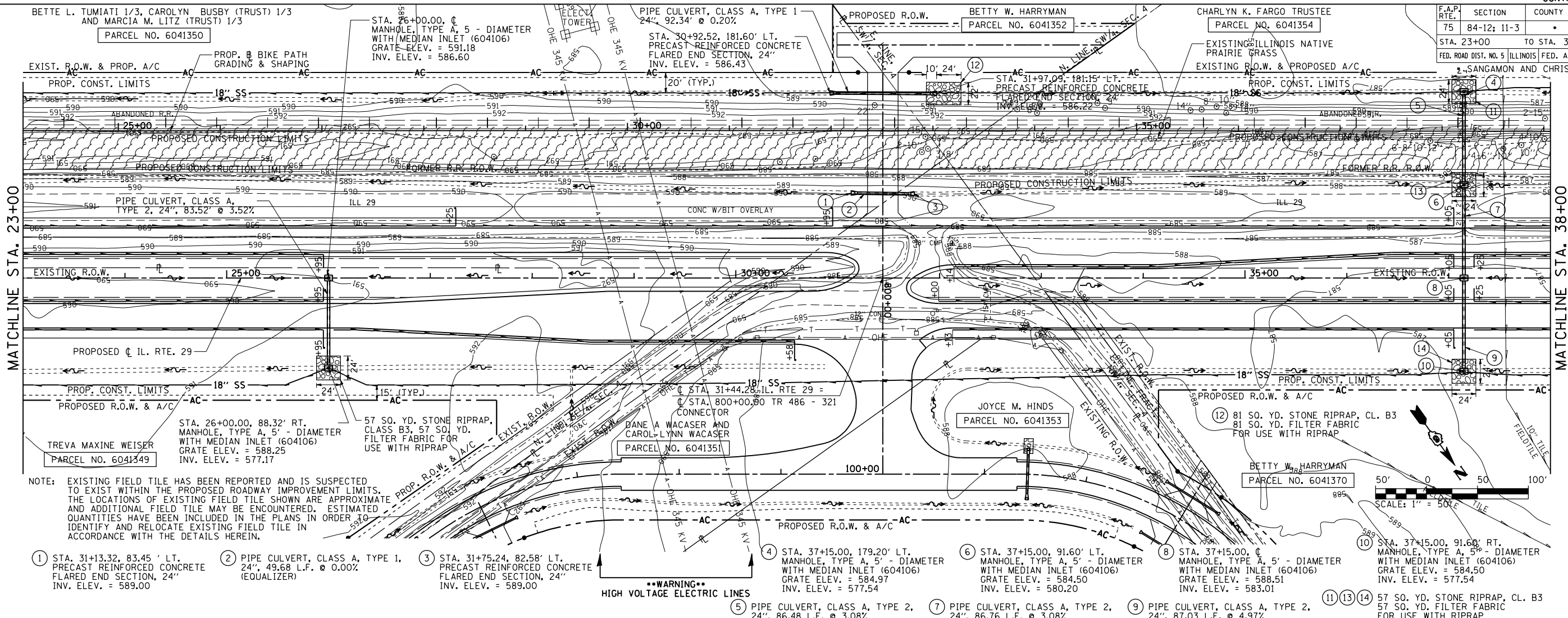


F.A.P. RTE.	SECTION	COUNTY	TOTAL SHEETS	SHEET NO.
75	84-12; 11-3		729	282
STA. 23+00		TO STA. 38+00		
FED. ROAD DIST. NO. 5 ILLINOIS FED. AID PROJECT				
SANGAMON AND CHRISTIAN				

DATE	BY	DATE
DATE	BY	DATE

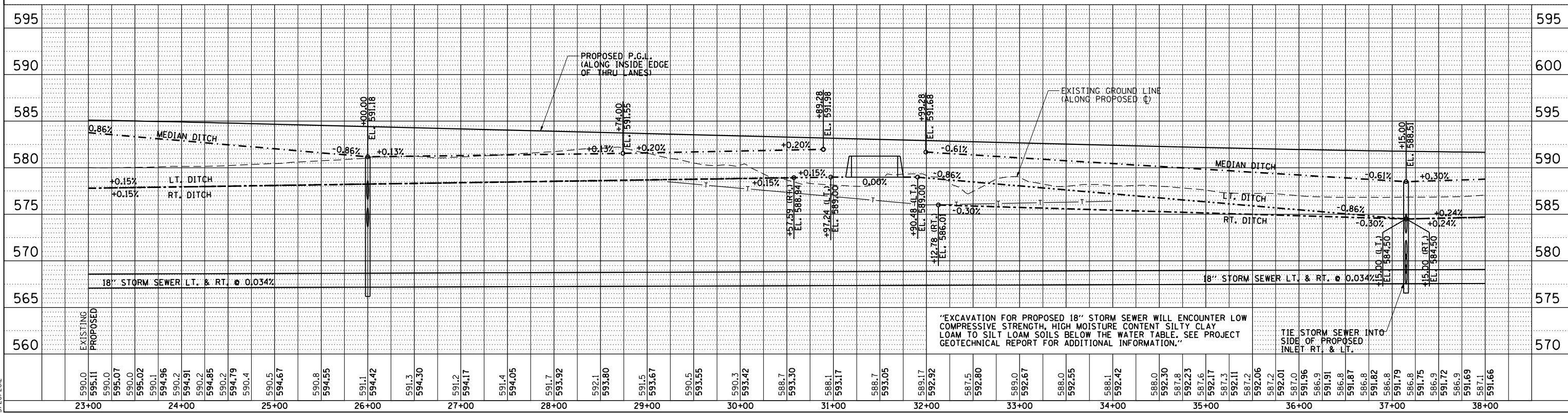
DATE	BY	DATE
DATE	BY	DATE

Dr:\cadd\pnc020\1\1001\3036601\dr\aw\sheet\5\6\72829-sht-DrainPnc001.dgn
3/28/2012



- ① STA. 31+13.32, 83.45' LT. PRECAST REINFORCED CONCRETE FLARED END SECTION, 24" INV. ELEV. = 589.00
- ② PIPE CULVERT, CLASS A, TYPE 1, 24", 49.68 L.F. @ 0.00% (EQUALIZER)
- ③ STA. 31+75.24, 82.58' LT. PRECAST REINFORCED CONCRETE FLARED END SECTION, 24" INV. ELEV. = 589.00
- ④ STA. 37+15.00, 179.20' LT. MANHOLE, TYPE A, 5' - DIAMETER WITH MEDIAN INLET (604106) GRATE ELEV. = 584.97 INV. ELEV. = 577.54
- ⑤ PIPE CULVERT, CLASS A, TYPE 2, 24", 86.48 L.F. @ 3.08%
- ⑥ STA. 37+15.00, 91.60' LT. MANHOLE, TYPE A, 5' - DIAMETER WITH MEDIAN INLET (604106) GRATE ELEV. = 584.50 INV. ELEV. = 580.20
- ⑦ PIPE CULVERT, CLASS A, TYPE 2, 24", 86.76 L.F. @ 3.08%
- ⑧ STA. 37+15.00, 0' MANHOLE, TYPE A, 5' - DIAMETER WITH MEDIAN INLET (604106) GRATE ELEV. = 588.51 INV. ELEV. = 583.01
- ⑨ PIPE CULVERT, CLASS A, TYPE 2, 24", 87.03 L.F. @ 4.97%
- ⑩ STA. 37+15.00, 91.60' RT. MANHOLE, TYPE A, 5' - DIAMETER WITH MEDIAN INLET (604106) GRATE ELEV. = 584.50 INV. ELEV. = 577.54
- ⑪ ⑬ ⑭ 57 SO. YD. STONE RIPRAP, CL. B3 57 SO. YD. FILTER FABRIC FOR USE WITH RIPRAP

****WARNING****
HIGH VOLTAGE ELECTRIC LINES



"EXCAVATION FOR PROPOSED 18" STORM SEWER WILL ENCOUNTER LOW COMPRESSIVE STRENGTH, HIGH MOISTURE CONTENT SILTY CLAY LOAM TO SILT LOAM SOILS BELOW THE WATER TABLE. SEE PROJECT GEOTECHNICAL REPORT FOR ADDITIONAL INFORMATION."

TIE STORM SEWER INTO SIDE OF PROPOSED INLET RT. & LT.