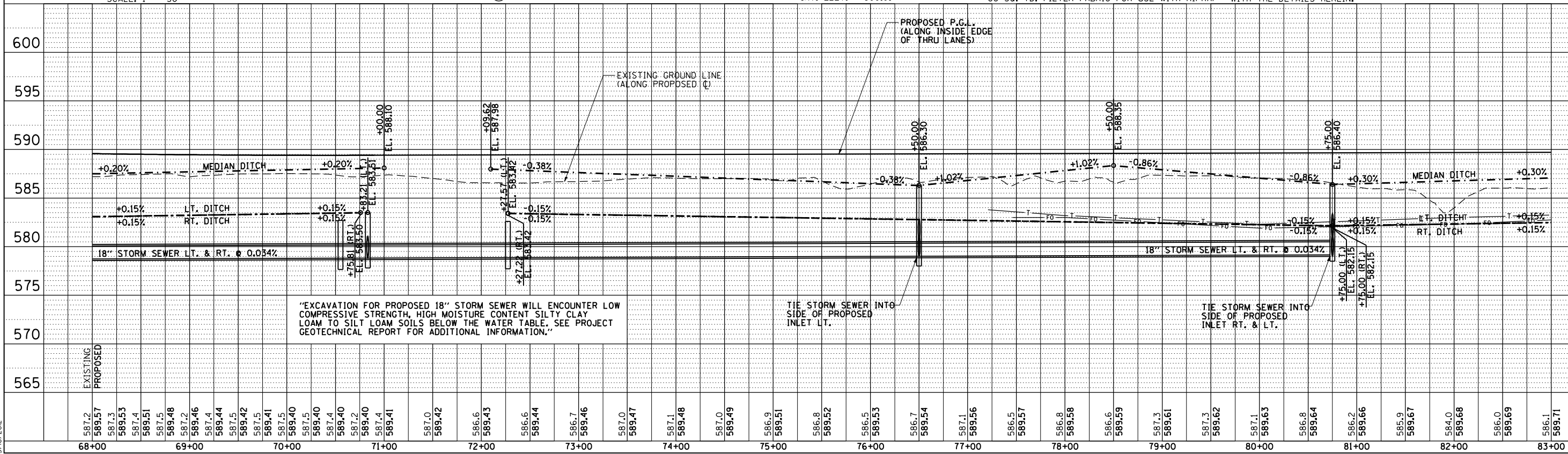
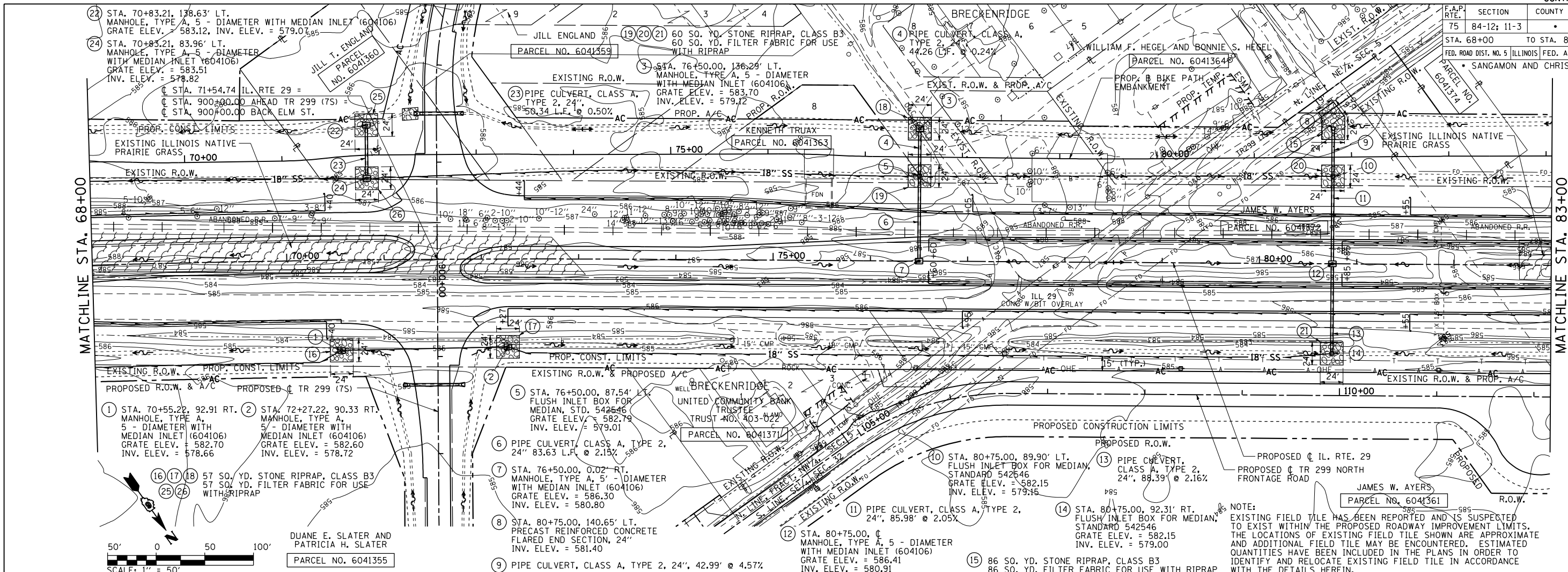


F.A.P. RTE.	SECTION	COUNTY	TOTAL SHEETS	SHEET NO.
75	84-12: 11-3		729	285
STA. 68+00		TO STA. 83+00		
FED. ROAD DIST. NO. 5 (ILLINOIS) FED. AID PROJECT				
SANGAMON AND CHRISTIAN				

PLAN	SURVEYED	DATE
	PLotted	
	Checked	
	By	
	NOTE BOOK	
	NO. OF WAY CHECKED	
	FILE NAME	

PROFILE	SURVEYED	DATE
	Plotted	
	Checked	
	By	
	NOTE BOOK	
	NO. OF WAY CHECKED	
	STRUCTURE NOTATIONS CHECKED	

D:\cadd\pnc023  
L:\001\306601\drw\sheet\5.D672829-sht-DrainPnc001.dgn  
3/16/2012



"EXCAVATION FOR PROPOSED 18\"/>

TIE STORM SEWER INTO SIDE OF PROPOSED INLET LT.

TIE STORM SEWER INTO SIDE OF PROPOSED INLET RT. & LT.