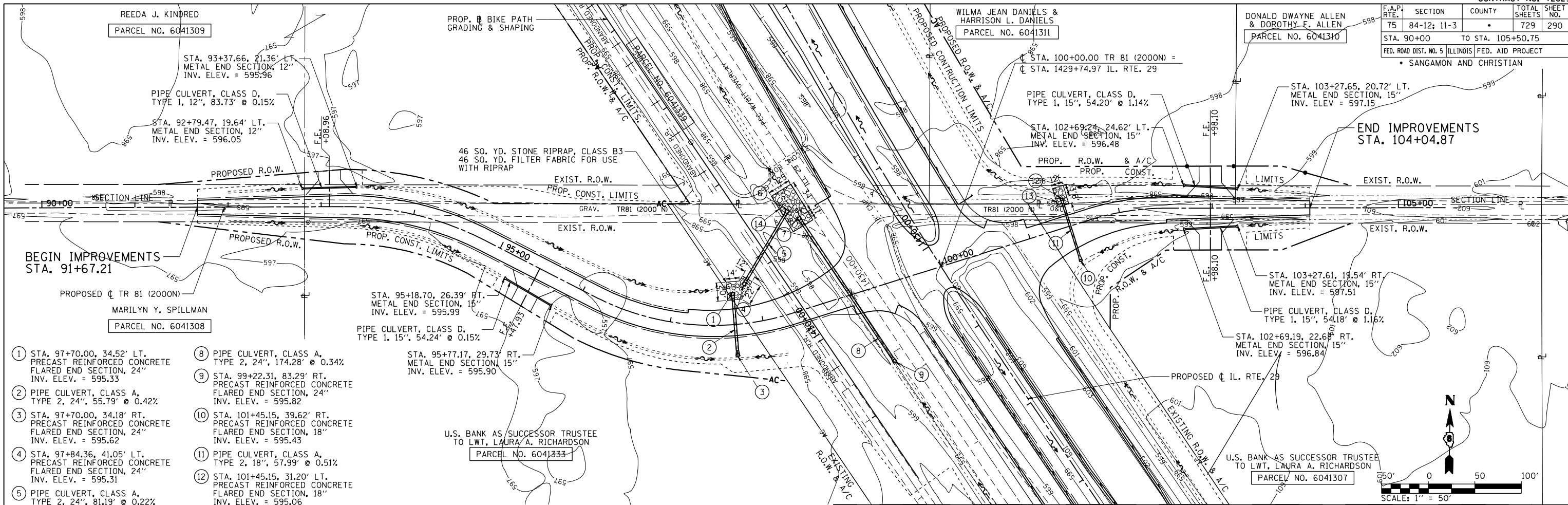


F.A.P. RTE.	SECTION	COUNTY	TOTAL SHEETS	SHEET NO.
75	84-12: 11-3		729	290
STA. 90+00		TO STA. 105+50.75		
FED. ROAD DIST. NO. 5 ILLINOIS FED. AID PROJECT				
SANGAMON AND CHRISTIAN				

DATE	BY	REVISION

DATE	BY	REVISION

Dr:\cadd\pnc028
L:\1001\10306001\dr\aw\sheet\5.D672829-sht-Dr\pnc028.dgn
3/28/2012



- 1 STA. 97+70.00, 34.52' LT. PRECAST REINFORCED CONCRETE FLARED END SECTION, 24" INV. ELEV. = 595.33
- 2 PIPE CULVERT, CLASS A, TYPE 2, 24", 55.79' @ 0.42%
- 3 STA. 97+70.00, 34.18' RT. PRECAST REINFORCED CONCRETE FLARED END SECTION, 24" INV. ELEV. = 595.62
- 4 STA. 97+84.36, 41.05' LT. PRECAST REINFORCED CONCRETE FLARED END SECTION, 24" INV. ELEV. = 595.31
- 5 PIPE CULVERT, CLASS A, TYPE 2, 24", 81.19' @ 0.22%
- 6 STA. 98+60.98, 106.86' LT. PRECAST REINFORCED CONCRETE FLARED END SECTION, 24" INV. ELEV. = 595.13
- 7 STA. 98+69.73, 96.36' LT. PRECAST REINFORCED CONCRETE FLARED END SECTION, 24" INV. ELEV. = 595.18
- 8 PIPE CULVERT, CLASS A, TYPE 2, 24", 174.28' @ 0.34%
- 9 STA. 99+22.31, 83.29' RT. PRECAST REINFORCED CONCRETE FLARED END SECTION, 24" INV. ELEV. = 595.82
- 10 STA. 101+45.15, 39.62' RT. PRECAST REINFORCED CONCRETE FLARED END SECTION, 18" INV. ELEV. = 595.43
- 11 PIPE CULVERT, CLASS A, TYPE 2, 18", 57.99' @ 0.51%
- 12 STA. 101+45.15, 31.20' LT. PRECAST REINFORCED CONCRETE FLARED END SECTION, 18" INV. ELEV. = 595.06
- 13 26 SO. YD. STONE RIPRAP, CLASS B3 26 SO. YD. FILTER FABRIC FOR USE WITH RIPRAP
- 14 117 SO. YD. STONE RIPRAP, CLASS B3 117 SO. YD. FILTER FABRIC FOR USE WITH RIPRAP

NOTE: EXISTING FIELD TILE HAS BEEN REPORTED AND IS SUSPECTED TO EXIST WITHIN THE PROPOSED ROADWAY IMPROVEMENT LIMITS. THE LOCATIONS OF EXISTING FIELD TILE SHOWN ARE APPROXIMATE AND ADDITIONAL FIELD TILE MAY BE ENCOUNTERED. ESTIMATED QUANTITIES HAVE BEEN INCLUDED IN THE PLANS IN ORDER TO IDENTIFY AND RELOCATE EXISTING FIELD TILE IN ACCORDANCE WITH THE DETAILS HEREIN.

