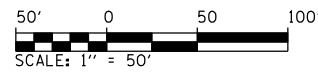


F.A.P. RTE.	SECTION	COUNTY	TOTAL SHEETS	SHEET NO.
75	84-12: 11-3		729	300
STA. 696+81		TO STA. 703+20.56		
FED. ROAD DIST. NO. 5 (ILLINOIS) FED. AID PROJECT				
• SANGAMON AND CHRISTIAN				

THOMAS G. HUNSLEY &
STEPHEN M. HUNSLEY (CO-TRUSTEES)
PARCEL NO. 6041334



PROPOSED C TR 63 (2300N)/
TR 74 (625E) SOUTH

- 1 STA. 697+56.00, 23.47' LT. PRECAST REINFORCED CONCRETE FLARED END SECTION, EQUIVALENT ROUND-SIZE, 24" INV. ELEV. = 589.23
- 2 PIPE CULVERT, CLASS A, TYPE 1, EQUIVALENT ROUND-SIZE 24" 39.76' @ 0.21%
- 3 STA. 697+56.00, 28.95' RT. PRECAST REINFORCED CONCRETE FLARED END SECTION, EQUIVALENT ROUND-SIZE, 24" INV. ELEV. = 589.34
- 4 18 SQ. YD. STONE RIPRAP, CLASS B3 18 SQ. YD. FILTER FABRIC FOR USE WITH RIPRAP
- 5 STA. 699+85.00, 87.54' LT. PRECAST REINFORCED CONCRETE FLARED END SECTION, 24" INV. ELEV. = 585.20
- 6 PIPE CULVERT, CLASS A, TYPE 2, 24" 188.40' @ 0.42%
- 7 STA. 699+85.00, 113.77' RT. PRECAST REINFORCED CONCRETE FLARED END SECTION, 24" INV. ELEV. = 586.05
- 8 77 SQ. YD. STONE RIPRAP, CLASS B3 77 SQ. YD. FILTER FABRIC FOR USE WITH RIPRAP

C STA. 696+81.00 TR 63 (2300N)/
TR 74 (625E) CONNECTOR=
C STA. 100+00.00 TR 63 (2300N)/
TR 74 (625E) SOUTH

PROPOSED C
TR 63 (2300N)/
TR 74 (625E)
CONNECTOR

C STA. 700+00.00 TR 63 (2300N)/
TR 74 (625E) CONNECTOR=
C STA. 1648+46.18 IL. RTE 29

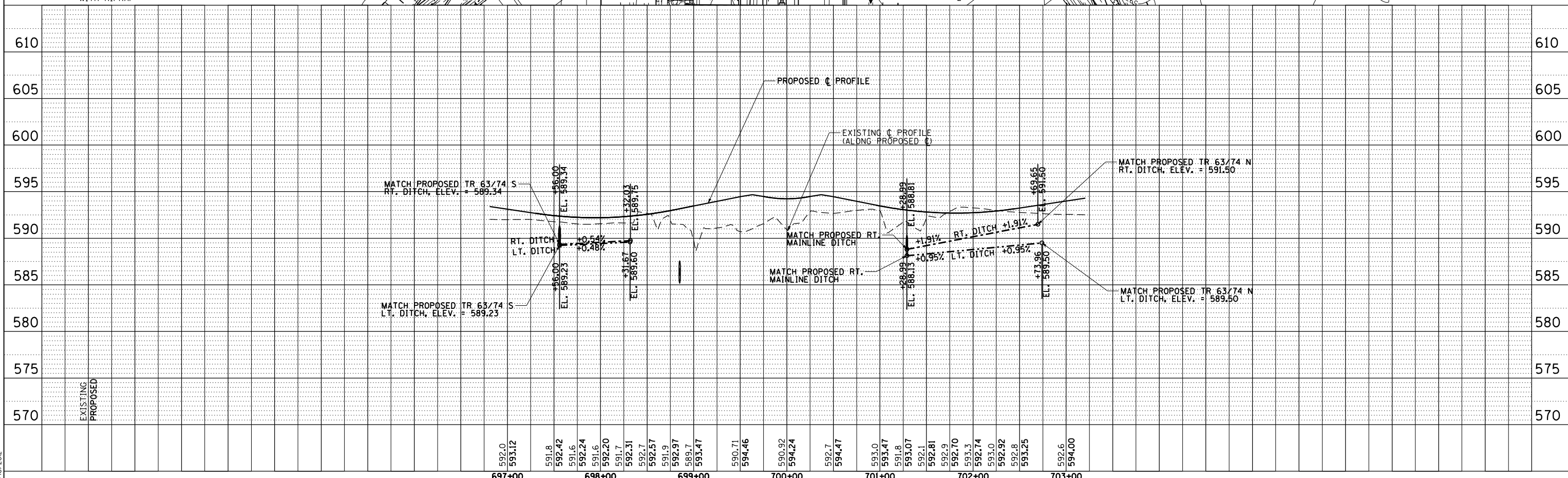
C STA. 703+20.56 TR 63 (2300N)/TR 74 (625E) CONNECTOR=
C STA. 100+00.00 TR 63 (2300N)/TR 74 (625E) NORTH

NOTE: EXISTING FIELD TILE HAS BEEN REPORTED AND IS SUSPECTED TO EXIST WITHIN THE PROPOSED ROADWAY IMPROVEMENT LIMITS. THE LOCATIONS OF EXISTING FIELD TILE SHOWN ARE APPROXIMATE AND ADDITIONAL FIELD TILE MAY BE ENCOUNTERED. ESTIMATED QUANTITIES HAVE BEEN INCLUDED IN THE PLANS IN ORDER TO IDENTIFY AND RELOCATE EXISTING FIELD TILE IN ACCORDANCE WITH THE DETAILS HEREIN.

- 9 STA. 701+28.99, 28.04' LT. PRECAST REINFORCED CONCRETE FLARED END SECTION, 18" INV. ELEV. = 588.13
- 10 PIPE CULVERT, CLASS A, TYPE 1, 18", 49.58' @ 1.09%
- 11 STA. 701+28.99, 34.36' RT. PRECAST REINFORCED CONCRETE FLARED END SECTION, 18" INV. ELEV. = 588.81
- 12 20 SQ. YD. STONE RIPRAP, CLASS B3 20 SQ. YD. FILTER FABRIC FOR USE WITH RIPRAP

PLAN	DATE
BY	
CHECKED	
NO. _____	

PROFILE	DATE
BY	
CHECKED	
NO. _____	



D:\cadd\pnc039 L:\DOT\130306601\dr-aw\sheet\5\672829-sht1-DrainPnc028.dgn 3/16/2012