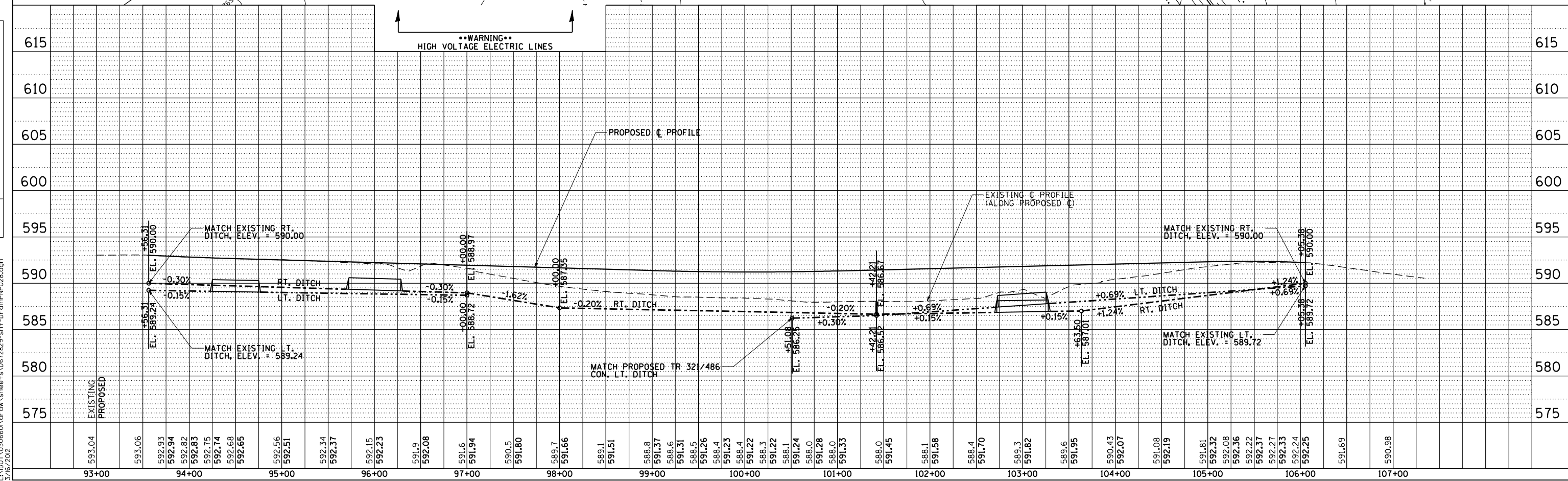
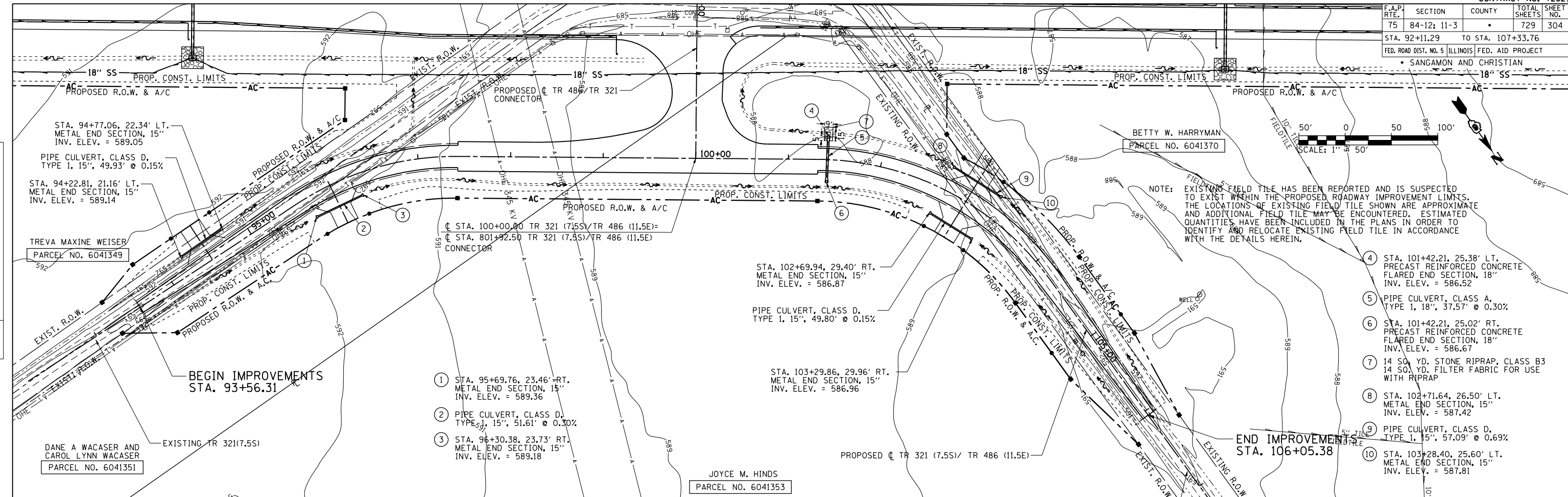


F.A.P. RTE.	SECTION	COUNTY	TOTAL SHEETS	SHEET NO.
75	84-12: 11-3		729	304
STA. 92+11.29 TO STA. 107+33.76				
FED. ROAD DIST. NO. 5 (ILLINOIS) FED. AID PROJECT				
SANGAMON AND CHRISTIAN				

DATE	BY

DATE	BY



Dr:\cadd\pnc043 L:\001\306601\dr\dw\sheet\672829-sht-Dr.dwg\pnc028.dwg  
 3/16/2012

**DRAINAGE & UTILITY PLAN & PROFILE: TR 486 (11.5E)/TR 321 (7.5S) - STA. 92+11.29 TO STA. 107+33.76**