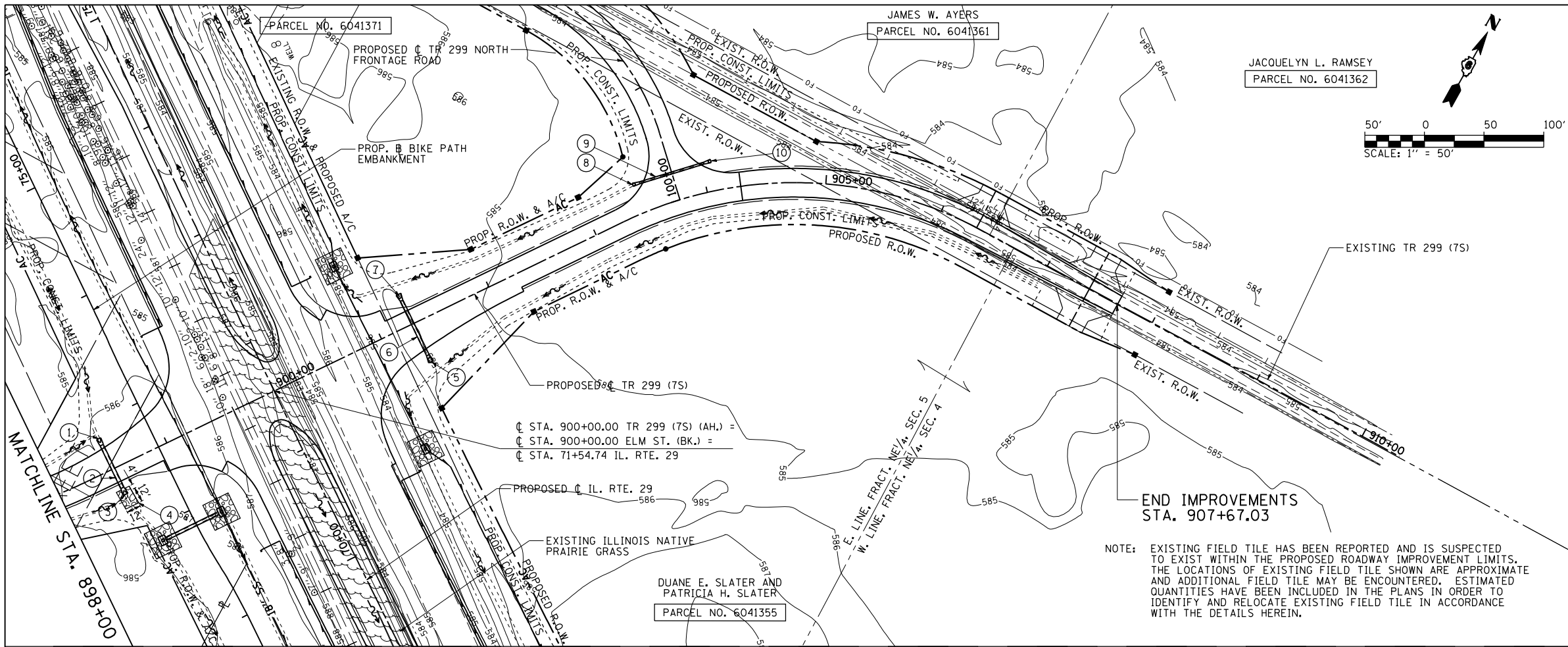


F.A.P. RTE.	SECTION	COUNTY	TOTAL SHEETS	SHEET NO.
75	84-12: 11-3		729	306
STA. 898+00 TO STA. 910+24.87				
FED. ROAD DIST. NO. 5 ILLINOIS FED. AID PROJECT				
• SANGAMON AND CHRISTIAN				

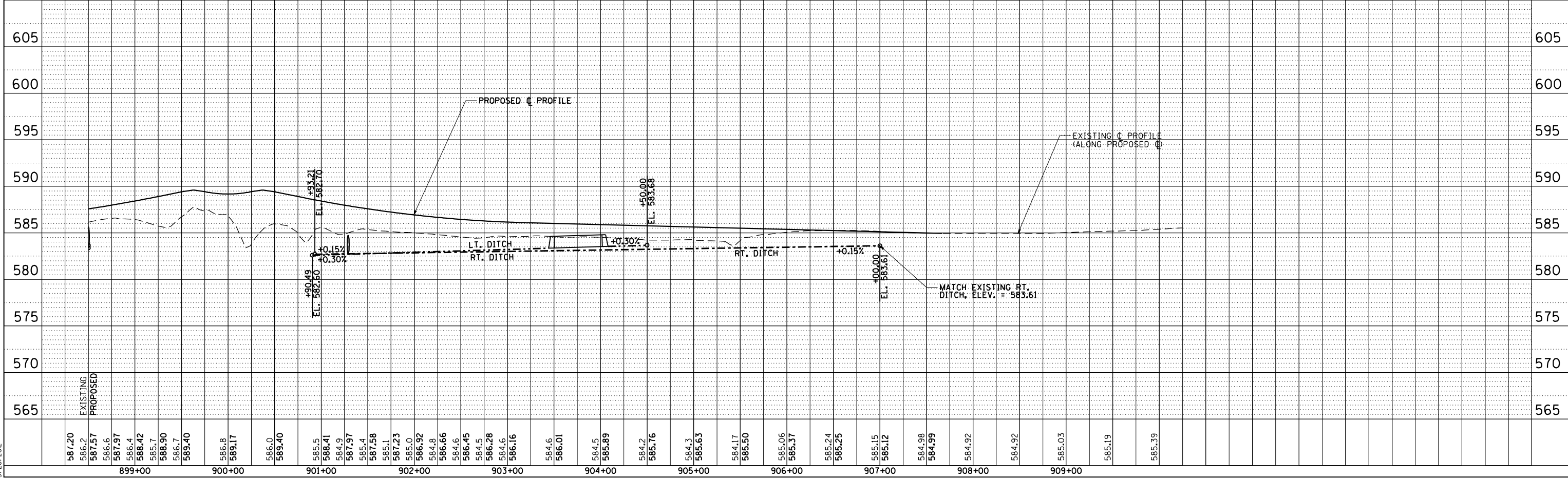


- ① STA. 898+50.00, 28.01' LT. PRECAST REINFORCED CONCRETE FLARED END SECTION, ELLIPTICAL, EQUIVALENT 24" INV. ELEV. = 583.66
- ② PIPE CULVERT, CLASS A, TYPE 1 24" EQUIVALENT ROUND SIZE, 39.06' @ 0.54%
- ③ STA. 898+50.00, 23.72' RT. PRECAST REINFORCED CONCRETE FLARED END SECTION, ELLIPTICAL, EQUIVALENT 24" INV. ELEV. = 583.38
- ④ 20 SQ. YD. STONE RIPRAP, CLASS B3 20 SQ. YD. FILTER FABRIC FOR USE WITH RIPRAP
- ⑤ STA. 901+29.04, 35.17' RT. PRECAST REINFORCED CONCRETE FLARED END SECTION, 24" INV. ELEV. = 582.75
- ⑥ PIPE CULVERT, CLASS A, TYPE 1, 24", (EQUALIZER) 49.79' @ 0.06%
- ⑦ STA. 901+29.04, 27.54' LT. PRECAST REINFORCED CONCRETE FLARED END SECTION, 24" INV. ELEV. = 582.72
- ⑧ STA. 903+44.39, 25.21' RT. PRECAST REINFORCED CONCRETE FLARED END SECTION, 15" INV. ELEV. = 583.36
- ⑨ PIPE CULVERT, CLASS A, TYPE 1, 15", 56.22' @ 0.28%
- ⑩ STA. 904+08.00, 25.21' LT. PRECAST REINFORCED CONCRETE FLARED END SECTION, 15" INV. ELEV. = 583.55

NOTE: EXISTING FIELD TILE HAS BEEN REPORTED AND IS SUSPECTED TO EXIST WITHIN THE PROPOSED ROADWAY IMPROVEMENT LIMITS. THE LOCATIONS OF EXISTING FIELD TILE SHOWN ARE APPROXIMATE AND ADDITIONAL FIELD TILE MAY BE ENCOUNTERED. ESTIMATED QUANTITIES HAVE BEEN INCLUDED IN THE PLANS IN ORDER TO IDENTIFY AND RELOCATE EXISTING FIELD TILE IN ACCORDANCE WITH THE DETAILS HEREIN.

PLAN	SURVEYED	BY	DATE
	NOTED		
	CHECKED		
	BY		
	NO.		

PROFILE	SURVEYED	BY	DATE
	NOTED		
	CHECKED		
	BY		
	NO.		



D:\cadd\pnc045 L:\001\1306601\dr-aw\sheet.s\672829-sh1-DrainPnc028.dgn 3/28/2012