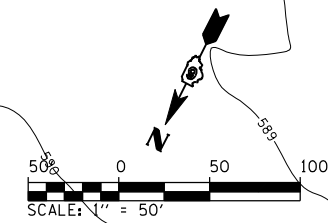


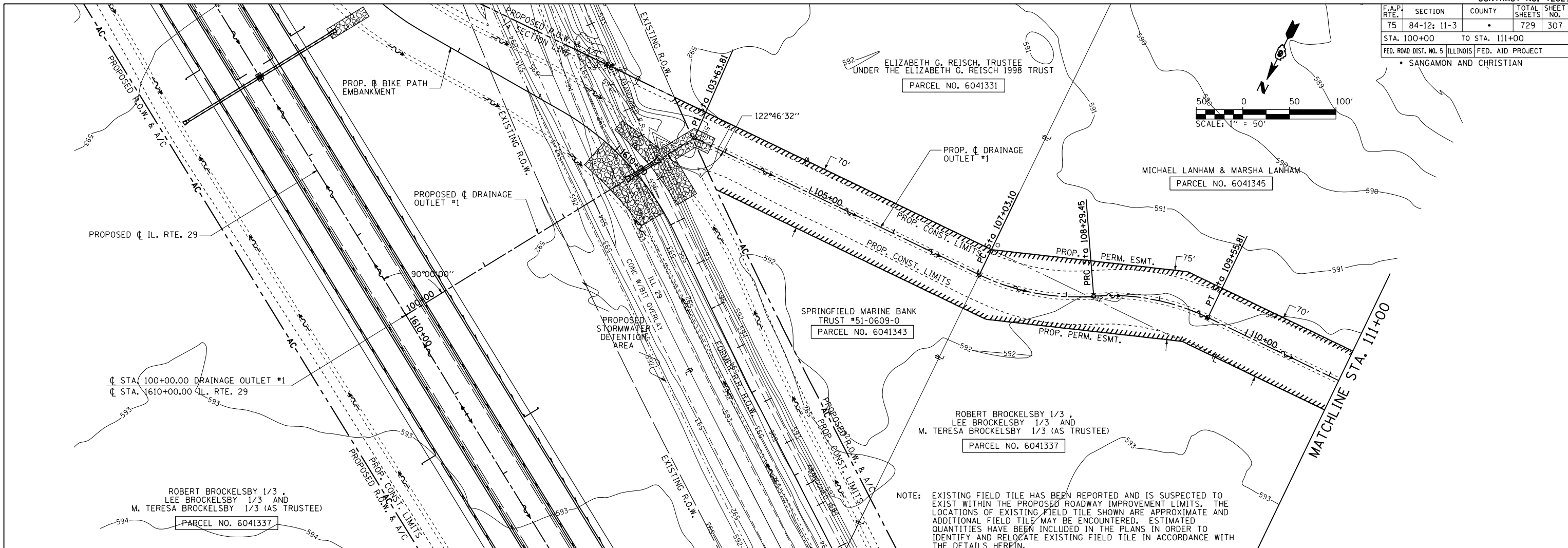
F.A.P. RTE.	SECTION	COUNTY	TOTAL SHEETS	SHEET NO.
75	84-12: 11-3	•	729	307
STA. 100+00		TO STA. 111+00		
FED. ROAD DIST. NO. 5 ILLINOIS FED. AID PROJECT				
• SANGAMON AND CHRISTIAN				



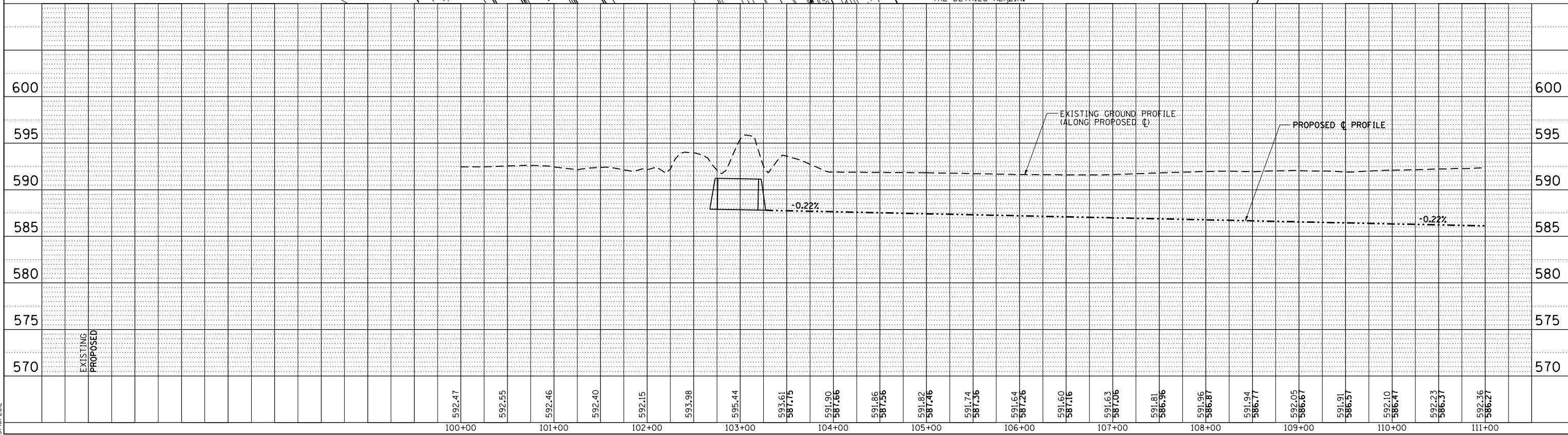
PLAN	SURVEYED	BY	DATE
	PLOTTED		
	CHECKED		
	BY		
	NOTE BOOK NO.		
	FILE NAME		

PROFILE	SURVEYED	BY	DATE
	PLOTTED		
	CHECKED		
	BY		
	NOTE BOOK NO.		
	STRUCTURE NOTATIONS CHFD		

D:\cadd\pnc049 L:\D01\1306601\dr-aw\sheet\5\672829-sht-DrainPnc028.dgn
 3/16/2012



NOTE: EXISTING FIELD TILE HAS BEEN REPORTED AND IS SUSPECTED TO EXIST WITHIN THE PROPOSED ROADWAY IMPROVEMENT LIMITS. THE LOCATIONS OF EXISTING FIELD TILE SHOWN ARE APPROXIMATE AND ADDITIONAL FIELD TILE MAY BE ENCOUNTERED. ESTIMATED QUANTITIES HAVE BEEN INCLUDED IN THE PLANS IN ORDER TO IDENTIFY AND RELOCATE EXISTING FIELD TILE IN ACCORDANCE WITH THE DETAILS HEREIN.



DRAINAGE & UTILITY PLAN & PROFILE: DRAINAGE OUTLET #1 100+00 TO STA. 111+00