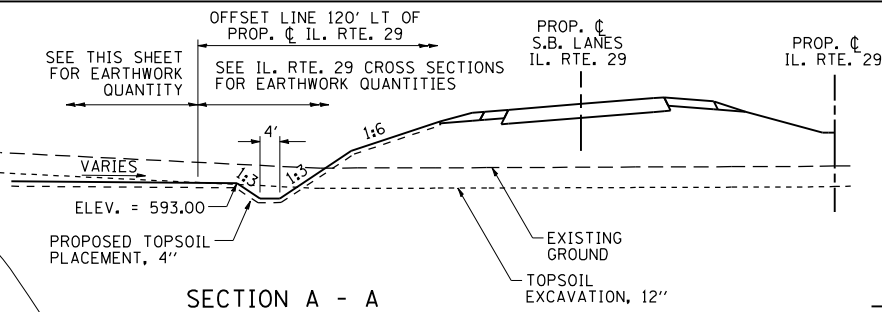
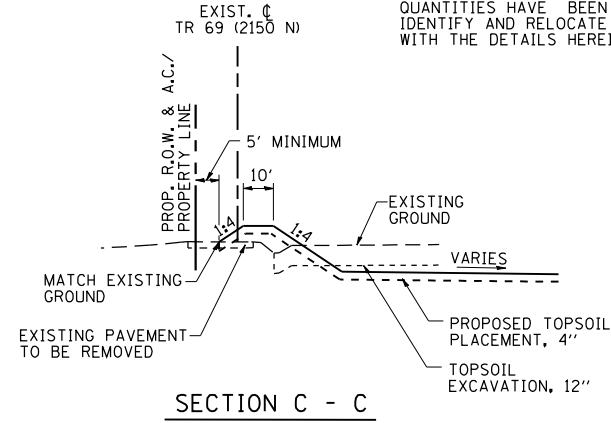


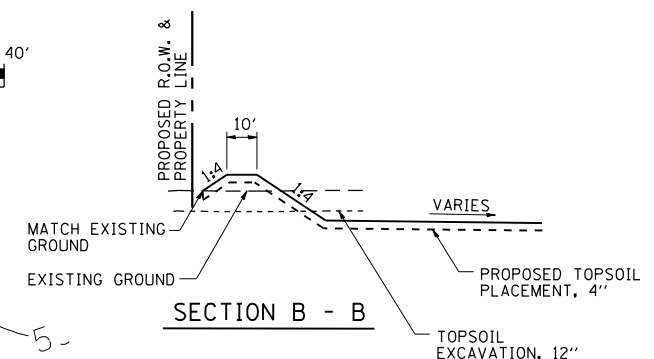
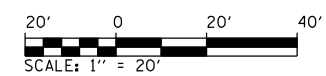
F.A. RTE.	SECTION	COUNTY	TOTAL SHEETS	SHEET NO.
75	84-12; 11-3		729	310
STA. N/A		TO STA. N/A		
FED. ROAD DIST. NO. 5 ILLINOIS FED. AID PROJECT				
• SANGAMON AND CHRISTIAN				

NOTE: EXISTING FIELD TILE HAS BEEN REPORTED AND IS SUSPECTED TO EXIST WITHIN THE PROPOSED ROADWAY IMPROVEMENT LIMITS. THE LOCATIONS OF EXISTING FIELD TILE SHOWN ARE APPROXIMATE AND ADDITIONAL FIELD TILE MAY BE ENCOUNTERED. ESTIMATED QUANTITIES HAVE BEEN INCLUDED IN THE PLANS IN ORDER TO IDENTIFY AND RELOCATE EXISTING FIELD TILE IN ACCORDANCE WITH THE DETAILS HEREIN.



LEGEND

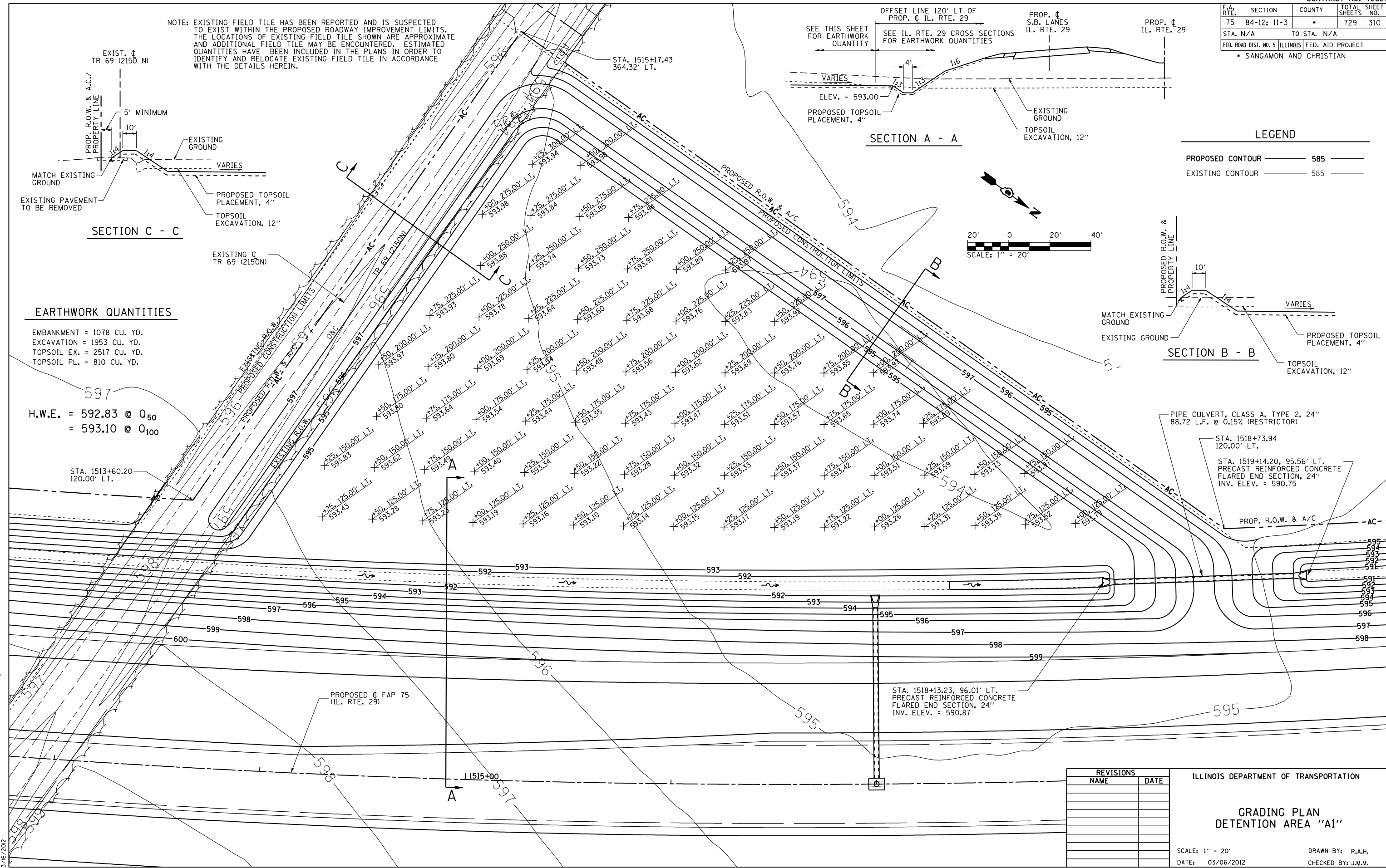
PROPOSED CONTOUR	585
EXISTING CONTOUR	585



EARTHWORK QUANTITIES

EMBANKMENT = 1078 CU. YD.
 EXCAVATION = 1953 CU. YD.
 TOPSOIL EX. = 2517 CU. YD.
 TOPSOIL PL. = 810 CU. YD.

H.W.E. = 592.83 @ 0₅₀
 = 593.10 @ 0₁₀₀



PIPE CULVERT, CLASS A, TYPE 2, 24"
 88.72 L.F. @ 0.15% (RESTRICTOR)

STA. 1518+73.94
 120.00' LT.

STA. 1519+14.20, 95.56' LT.
 PRECAST REINFORCED CONCRETE
 FLARED END SECTION, 24"
 INV. ELEV. = 590.75

STA. 1518+13.23, 96.01' LT.
 PRECAST REINFORCED CONCRETE
 FLARED END SECTION, 24"
 INV. ELEV. = 590.87

REVISIONS	
NAME	DATE

ILLINOIS DEPARTMENT OF TRANSPORTATION

**GRADING PLAN
 DETENTION AREA "A1"**

SCALE: 1" = 20"
 DATE: 03/06/2012

DRAWN BY: R.A.H.
 CHECKED BY: J.M.M.

Default L:\DOT\030601\draw_sheets\030601\030601.dwg sheets\030601\030601.dwg 3/6/2012