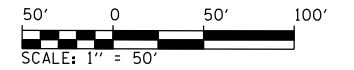
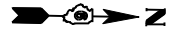


F.A. RTE.	SECTION	COUNTY	TOTAL SHEETS	SHEET NO.
75	84-12; 11-3	•	729	326
STA. 505+00		TO STA. 509+00		
FED. ROAD DIST. NO.		ILLINOIS FED. AID PROJECT		

• SANGAMON AND CHRISTIAN



STONE W/IRON PIN (FOUND)
SW CORNER, SE 1/4, SEC. 11
T14N, R3W, 3RD P.M.

SE 1/4 SECTION 11, T.14N., R.3W., 3RD P.M.

PARCEL NO. 6041330 A & B
BARBARA JEANNA CRUM & DONNA JO FERGUSON
AS TRUSTEES OF TRUST AGREEMENT DATED
AUGUST 25, 1994 KNOWN AS TRUST NO. 82594,
AS TO AN UNDIVIDED 1/2 INTEREST AND LOUETTA IRWIN,
TRUSTEE UNDER TRUST AGREEMENT DATED OCTOBER 23, 1995,
AS TO AN UNDIVIDED 1/2 INTEREST

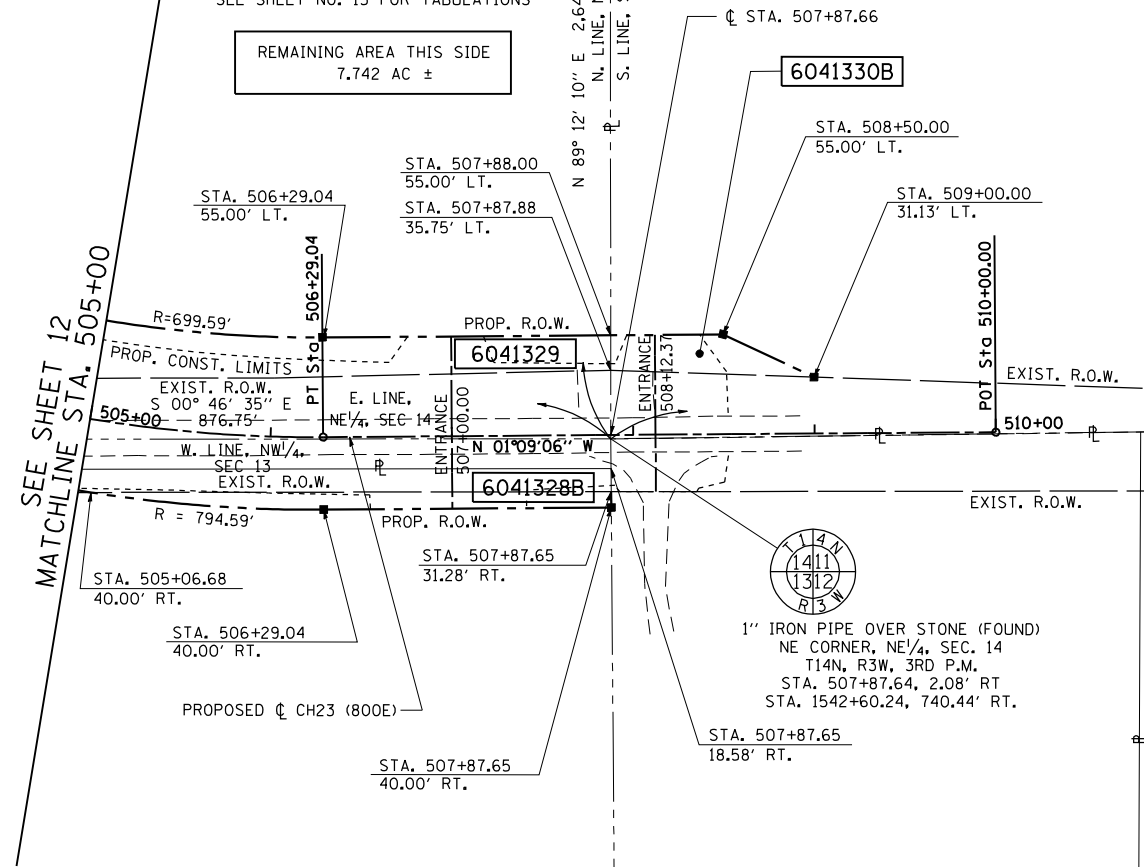
SEE SHEET NO. 16 FOR TABULATIONS

NE 1/4 SECTION 14,
T.14N., R.3W., 3RD P.M.

PARCEL NO. 6041329
NORMA BROCKELSBY, AS TRUSTEE
UNDER TRUST AGREEMENT DATED
JULY 22, 2009, AND KNOWN AS
BROCKELSBY, NJ TRUST NO. 112432

SEE SHEET NO. 15 FOR TABULATIONS

REMAINING AREA THIS SIDE
7.742 AC ±



N 01° 29' 04" W 2,637.73'
CORNER TO CORNER

E. LINE, SE 1/4, SEC. 11
W. LINE, SW 1/4, SEC. 12

IRON PIPE (FOUND)
NE CORNER, SE 1/4, SEC. 11
T14N, R3W, 3RD P.M.

1" IRON PIPE OVER STONE (FOUND)
NE CORNER, NE 1/4, SEC. 14
T14N, R3W, 3RD P.M.
STA. 507+87.64, 2.08' RT
STA. 1542+60.24, 740.44' RT.

PROP. CH 23 CURVE-3 DATA
PI STA. = 504+19.42
Δ = 32° 45' 14" (LT)
D = 7° 35' 35"
R = 754.59'
T = 221.76'
L = 431.37'
E = 31.91'
P.C. STA. = 501+97.66
P.T. STA. = 506+29.04

NOTES:

BEARINGS ARE BASED ON THE ILLINOIS STATE PLANE COORDINATE SYSTEM NAD 83 (1986) WEST ZONE.

PLAN DISTANCES AND STATIONING ARE IN GRID ENGLISH, TO CONVERT TO GROUND DIVIDE BY GRID FACTOR, CONVERSION FACTOR = 0.99996337

NW 1/4 SECTION 13, T.14N., R.3W., 3RD P.M.

PARCEL NO. 6041328 A & B
MELANIE GREEN

SEE SHEET NO. 10 FOR TABULATIONS

SW 1/4 SECTION 12, T.14N., R.3W., 3RD P.M.

STONE (FOUND)
NE CORNER, NW 1/4, SEC. 13
T14N, R3W, 3RD P.M.

REVISION		RIGHT OF WAY PLANS
DATE	DESCRIPTION	
		ROUTE: FAP 75 (IL ROUTE 29)
		SECTION: 84-11(11B), 11-2(2B,B-1)
		COUNTY: CHRISTIAN
		JOB NO.: R-96-004-01
		STA. 505+00 TO STA. 509+00
		SCALE: 1" = 50'



L:\DOT\0306601\draw\sheets\0306601\0306601.dwg 3/16/2012