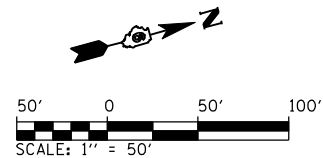


F.A. RTE.	SECTION	COUNTY	TOTAL SHEETS	SHEET NO.
75	84-12; 11-3	•	729	330
STA. 1583+00		TO STA. 1592+00		
FED. ROAD DIST. NO.		ILLINOIS FED. AID PROJECT		
• SANGAMON AND CHRISTIAN				



PARCEL NO. 6041331 A & B
ELIZABETH G. REISCH, TRUSTEE
UNDER THE ELIZABETH G. REISCH
1998 TRUST

SEE SHEET NO. 20 FOR TABULATIONS

REMAINING AREA THIS SIDE
93.084 AC ±

SW 1/4 SECTION 11, T.14N., R.3W., 3RD P.M.

CL STA. 1586+58.05 IL. RTE 29 =
CL STA. 600+00.00 TR 88 (725E)

PARCEL NO. 6041331 A & B
ELIZABETH G. REISCH, TRUSTEE
UNDER THE ELIZABETH G. REISCH 1998 TRUST

SEE SHEET NO. 20 FOR TABULATIONS

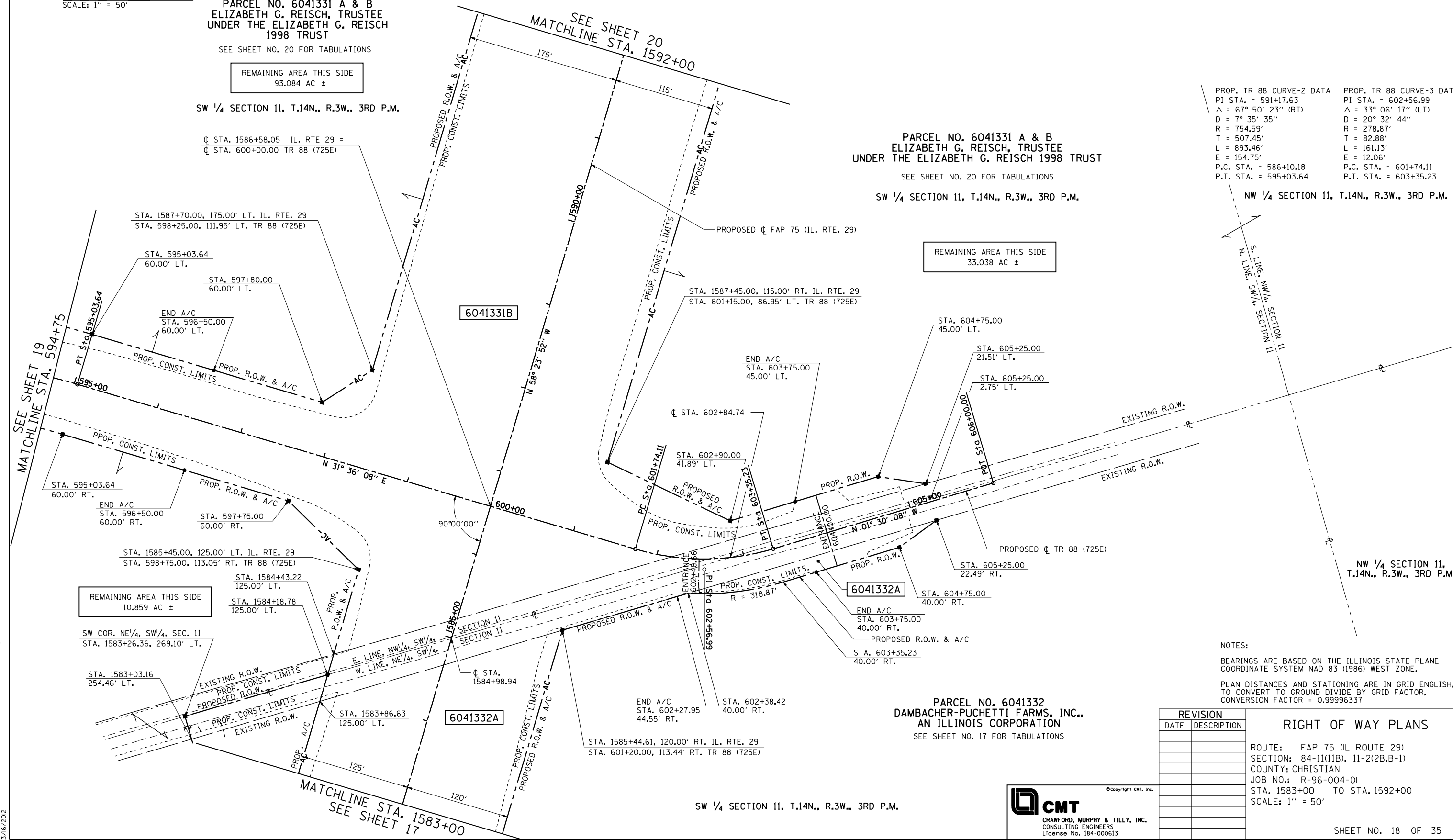
SW 1/4 SECTION 11, T.14N., R.3W., 3RD P.M.

REMAINING AREA THIS SIDE
33.038 AC ±

PROP. TR 88 CURVE-2 DATA
PI STA. = 591+17.63
Δ = 67° 50' 23" (RT)
D = 7° 35' 35"
R = 754.59'
T = 507.45'
L = 893.46'
E = 154.75'
P.C. STA. = 586+10.18
P.T. STA. = 595+03.64

PROP. TR 88 CURVE-3 DATA
PI STA. = 602+56.99
Δ = 33° 06' 17" (LT)
D = 20° 32' 44"
R = 278.87'
T = 82.88'
L = 161.13'
E = 12.06'
P.C. STA. = 601+74.11
P.T. STA. = 603+35.23

NW 1/4 SECTION 11, T.14N., R.3W., 3RD P.M.



NOTES:
BEARINGS ARE BASED ON THE ILLINOIS STATE PLANE COORDINATE SYSTEM NAD 83 (1986) WEST ZONE.
PLAN DISTANCES AND STATIONING ARE IN GRID ENGLISH, TO CONVERT TO GROUND DIVIDE BY GRID FACTOR, CONVERSION FACTOR = 0.99996337

PARCEL NO. 6041332
DAMBACHER-PUCHETTI FARMS, INC.,
AN ILLINOIS CORPORATION
SEE SHEET NO. 17 FOR TABULATIONS

REVISION		RIGHT OF WAY PLANS
DATE	DESCRIPTION	
		ROUTE: FAP 75 (IL ROUTE 29) SECTION: 84-11(11B), 11-2(2B,B-1) COUNTY: CHRISTIAN JOB NO.: R-96-004-01 STA. 1583+00 TO STA. 1592+00 SCALE: 1" = 50'



L:\DOT\0306601\draw\sheet\0306601-draw\sheet\0306601-sht-R0WPLN_018.dgn 3/6/2012