

F.A. RTE.	SECTION	COUNTY	TOTAL SHEETS	SHEET NO.
75	84-12; 11-3		729	343
STA. 53+00		TO STA. 68+00		
FED. ROAD DIST. NO.		ILLINOIS FED. AID PROJECT		
• SANGAMON AND CHRISTIAN				

PARCEL NO. 6041354A
CHARLYN K FARGO TRUSTEE
SEE SHEET NO. 30 FOR TABULATIONS

PARCEL NO. 6041354B
CHARLYN K FARGO TRUSTEE
SEE SHEET NO. 30 FOR TABULATIONS

FRACTIONAL NW/4, SEC. 4,
T.14N., R.3W., 3RD P.M.

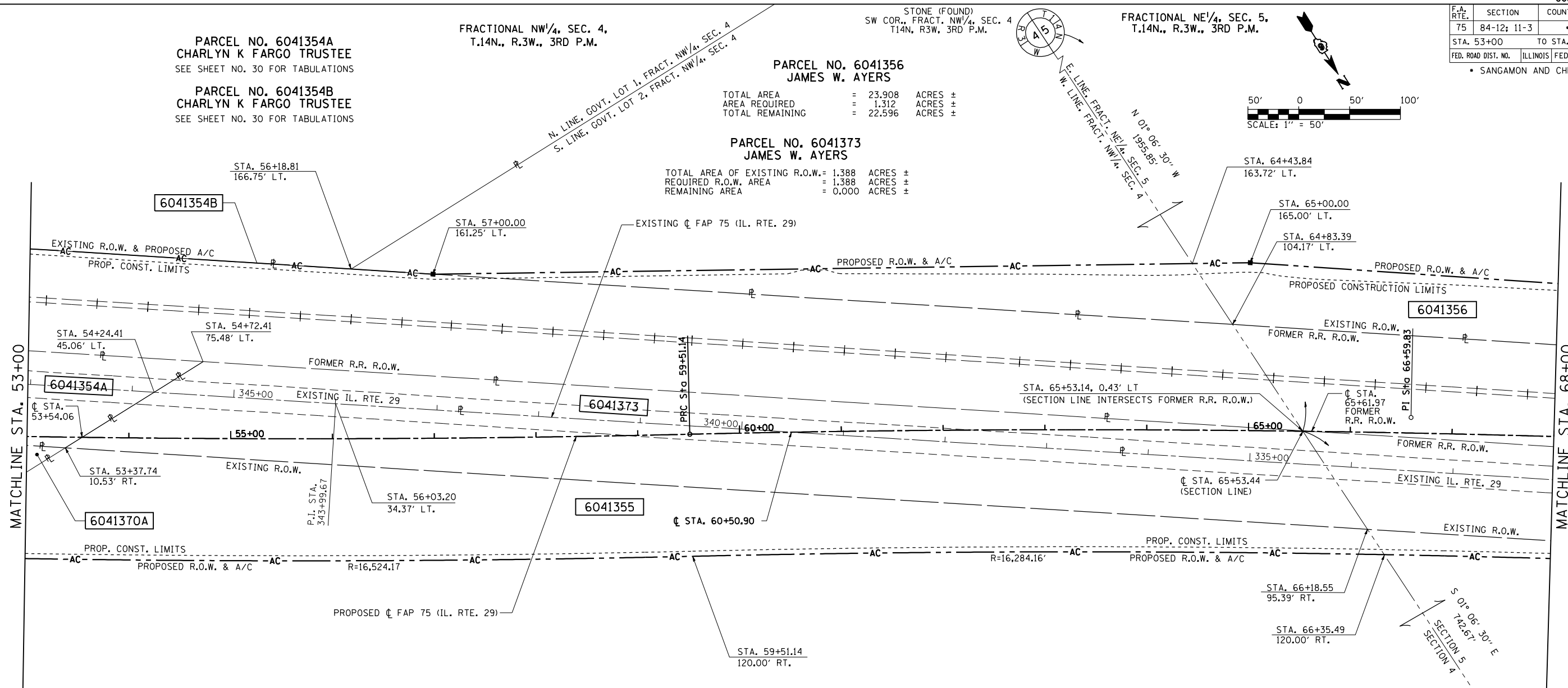
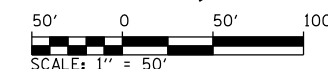
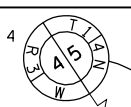
PARCEL NO. 6041356
JAMES W. AYERS

TOTAL AREA = 23.908 ACRES ±
AREA REQUIRED = 1.312 ACRES ±
TOTAL REMAINING = 22.596 ACRES ±

PARCEL NO. 6041373
JAMES W. AYERS

TOTAL AREA OF EXISTING R.O.W. = 1.388 ACRES ±
REQUIRED R.O.W. AREA = 1.388 ACRES ±
REMAINING AREA = 0.000 ACRES ±

FRACTIONAL NE/4, SEC. 5,
T.14N., R.3W., 3RD P.M.



MATCHLINE STA. 53+00

MATCHLINE STA. 68+00

PARCEL NO. 6041370 A & B
BETTY W. HARRYMAN
SEE SHEET NO. 30 FOR TABULATIONS

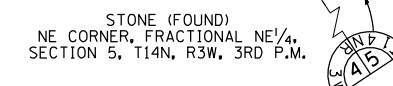
PARCEL NO. 6041355
DUANE E. SLATER AND PATRICIA H. SLATER

TOTAL AREA = 38.838 ACRES ±
AREA REQUIRED = 3.224 ACRES ±
EXISTING R.O.W. = 3.169 ACRES ±
TOTAL AREA REQUIRED = 6.393 ACRES ±
TOTAL REMAINING = 32.445 ACRES ±

REMAINING AREA THIS SIDE
31.430 AC ±

PROP. IL. RTE 29 CURVE-5 DATA PI STA. = 52+45.07 Δ = 4° 56' 07" (LT) D = 0° 20' 57" R = 16,404.17' T = 706.94' L = 1,413.01' E = 15.23' P.C. STA. = 45+38.13 P.R.C. STA. = 59+51.14	PROP. IL. RTE 29 CURVE-6 DATA PI STA. = 66+59.83 Δ = 4° 56' 51" (RT) D = 0° 20' 57" R = 16,404.16' T = 708.69' L = 1,416.50' E = 15.30' P.R.C. STA. = 59+51.14 P.T. STA. = 73+67.64
---	---

FRACTIONAL NW/4 SECTION 4, T.14N., R.3W., 3RD P.M.



NOTES:

BEARINGS ARE BASED ON THE ILLINOIS STATE PLANE COORDINATE SYSTEM NAD 83 (1986) WEST ZONE.

PLAN DISTANCES AND STATIONING ARE IN GRID ENGLISH, TO CONVERT TO GROUND DIVIDE BY GRID FACTOR, CONVERSION FACTOR = 0.99996337



REVISION		RIGHT OF WAY PLANS
DATE	DESCRIPTION	
		ROUTE: FAP 75 (IL ROUTE 29)
		SECTION: 84-11(11B), 11-2(2B,B-1)
		COUNTY: SANGAMON
		JOB NO.: R-96-004-01
		STA. 53+00 TO STA. 68+00
		SCALE: 1" = 50'