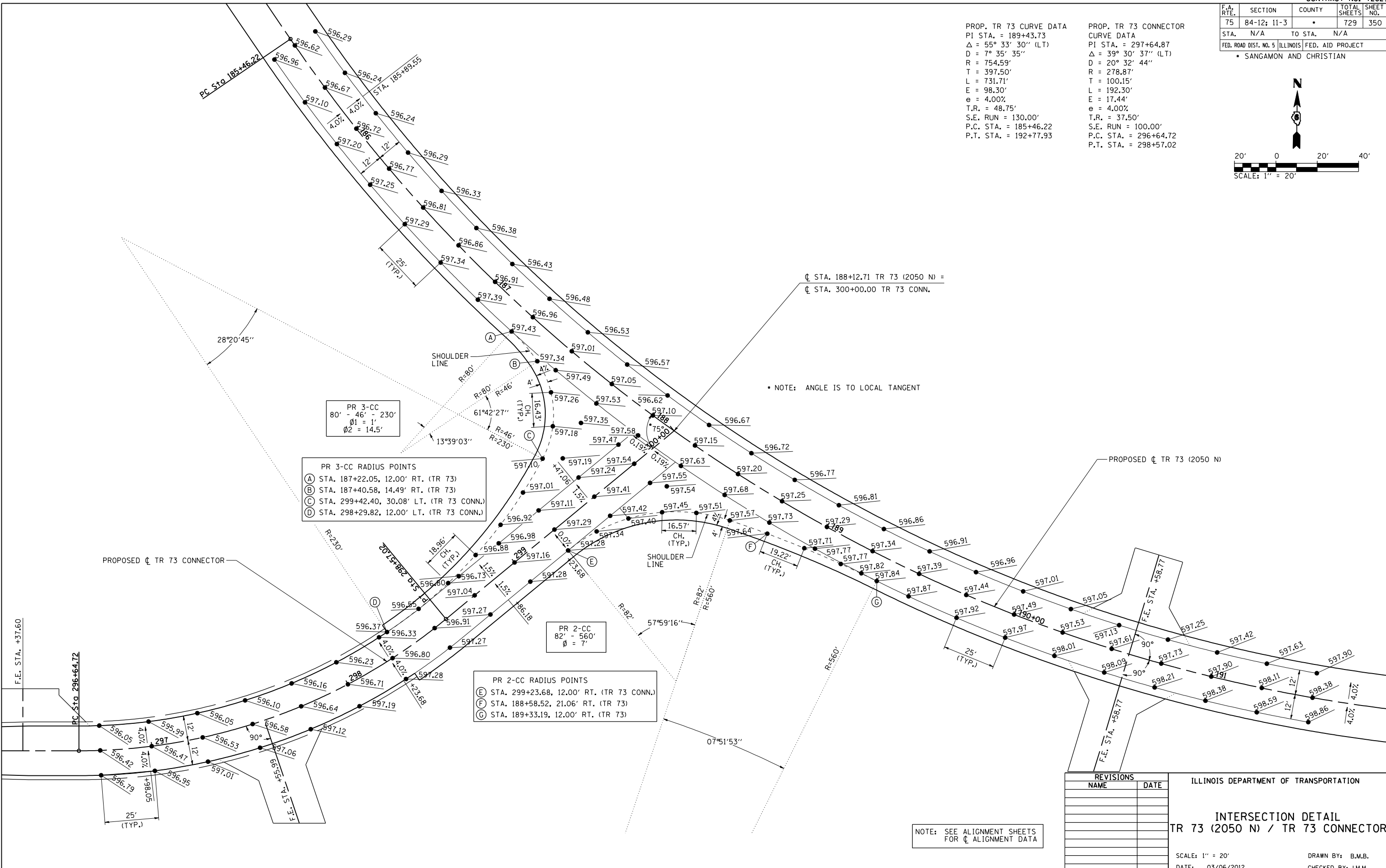
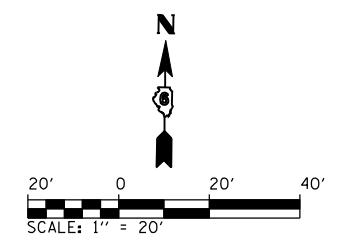


F.A. RTE.	SECTION	COUNTY	TOTAL SHEETS	SHEET NO.
75	84-12: 11-3	•	729	350
STA.	N/A	TO STA.	N/A	
FED. ROAD DIST. NO. 5 ILLINOIS FED. AID PROJECT				
• SANGAMON AND CHRISTIAN				

PROP. TR 73 CURVE DATA  
 PI STA. = 189+43.73  
 $\Delta = 55^\circ 33' 30''$  (LT)  
 $D = 7^\circ 35' 35''$   
 $R = 754.59'$   
 $T = 397.50'$   
 $L = 731.71'$   
 $E = 98.30'$   
 $e = 4.00\%$   
 $T.R. = 48.75'$   
 $S.E. RUN = 130.00'$   
 $P.C. STA. = 185+46.22$   
 $P.T. STA. = 192+77.93$

PROP. TR 73 CONNECTOR CURVE DATA  
 PI STA. = 297+64.87  
 $\Delta = 39^\circ 30' 37''$  (LT)  
 $D = 20^\circ 32' 44''$   
 $R = 278.87'$   
 $T = 100.15'$   
 $L = 192.30'$   
 $E = 17.44'$   
 $e = 4.00\%$   
 $T.R. = 37.50'$   
 $S.E. RUN = 100.00'$   
 $P.C. STA. = 296+64.72$   
 $P.T. STA. = 298+57.02$



PR 3-CC  
 80' - 46' - 230'  
 $\phi 1 = 1'$   
 $\phi 2 = 14.5'$

PR 3-CC RADIUS POINTS  
 (A) STA. 187+22.05, 12.00' RT. (TR 73)  
 (B) STA. 187+40.58, 14.49' RT. (TR 73)  
 (C) STA. 299+42.40, 30.08' LT. (TR 73 CONN.)  
 (D) STA. 298+29.82, 12.00' LT. (TR 73 CONN.)

PR 2-CC  
 82' - 560'  
 $\phi = 7'$

PR 2-CC RADIUS POINTS  
 (E) STA. 299+23.68, 12.00' RT. (TR 73 CONN.)  
 (F) STA. 188+58.52, 21.06' RT. (TR 73)  
 (G) STA. 189+33.19, 12.00' RT. (TR 73)

NOTE: SEE ALIGNMENT SHEETS FOR  $\phi$  ALIGNMENT DATA

REVISIONS	
NAME	DATE

ILLINOIS DEPARTMENT OF TRANSPORTATION

**INTERSECTION DETAIL**  
 TR 73 (2050 N) / TR 73 CONNECTOR

SCALE: 1" = 20'  
 DATE: 03/06/2012

DRAWN BY: B.M.B.  
 CHECKED BY: J.M.M.

Default L:\DOT\030660\Draw\Sheets\030660\Draw\IntSecDetailTR73\_Con.dgn  
 3/6/2012