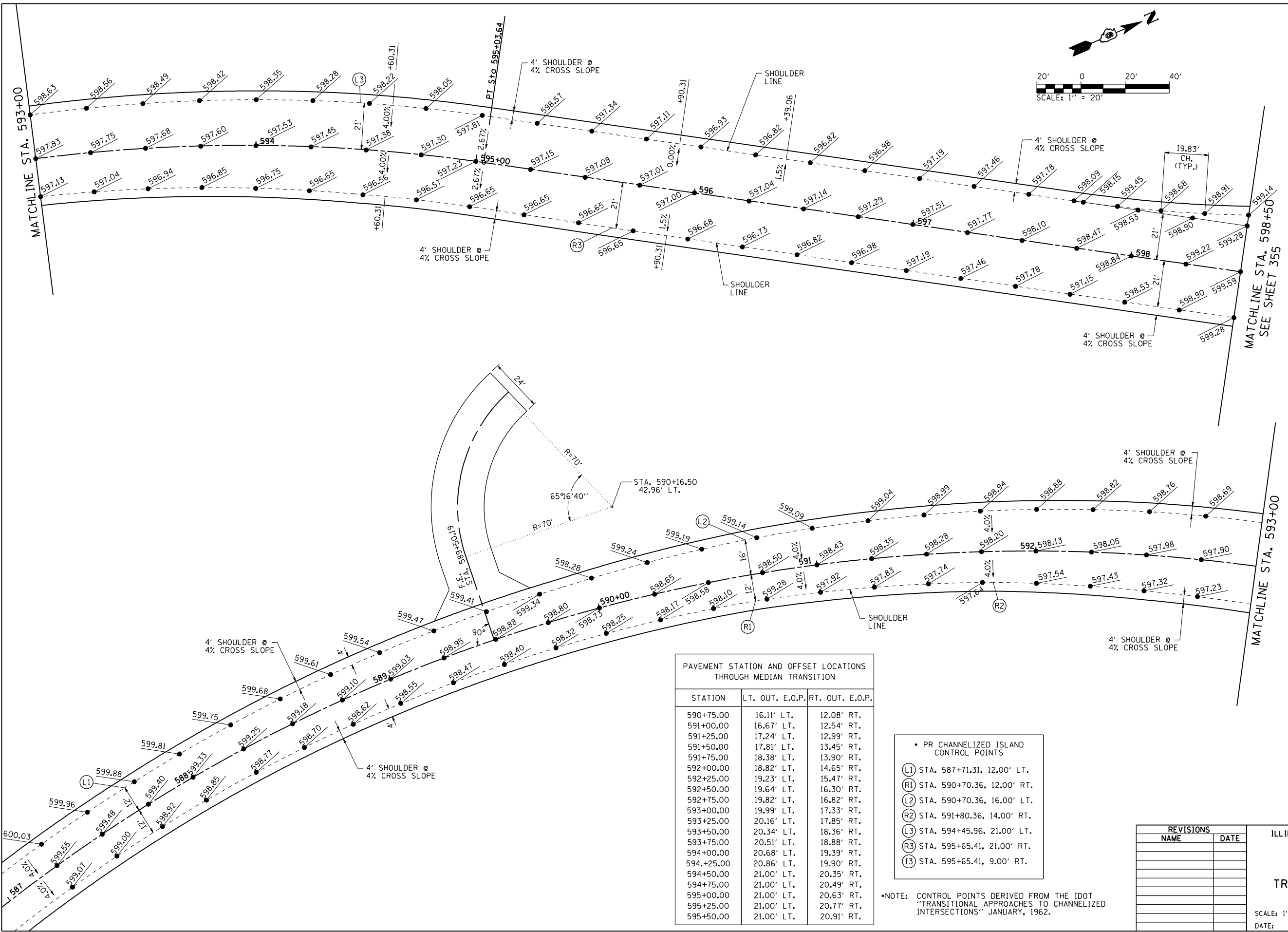
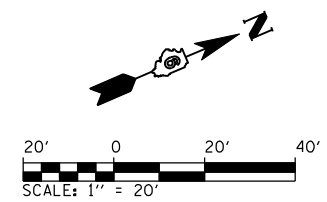


F.A. RTE.	SECTION	COUNTY	TOTAL SHEETS	SHEET NO.
75	84-12; 11-3	•	729	356
STA. N/A		TO STA. N/A		
FED. ROAD DIST. NO. 5 ILLINOIS FED. AID PROJECT				
• SANGAMON AND CHRISTIAN				

PROP. TR88 CURVE-2 DATA
 P1 STA. = 591+17.63
 $\Delta = 67^\circ 50' 23''$ (RT)
 $D = 7^\circ 35' 35''$
 $R = 754.59'$
 $T = 507.45'$
 $L = 893.46'$
 $E = 154.75'$
 $e = 4.0\%$
 $T.R. = 48.75'$
 $S.E. RUN = 130.00'$
 $P.C. STA. = 586+10.18$
 $P.T. STA. = 595+03.64$



STATION	LT. OUT. E.O.P.	RT. OUT. E.O.P.
590+75.00	16.11' LT.	12.08' RT.
591+00.00	16.67' LT.	12.54' RT.
591+25.00	17.24' LT.	12.99' RT.
591+50.00	17.81' LT.	13.45' RT.
591+75.00	18.38' LT.	13.90' RT.
592+00.00	18.82' LT.	14.65' RT.
592+25.00	19.23' LT.	15.47' RT.
592+50.00	19.64' LT.	16.30' RT.
592+75.00	19.82' LT.	16.82' RT.
593+00.00	19.99' LT.	17.33' RT.
593+25.00	20.16' LT.	17.85' RT.
593+50.00	20.34' LT.	18.36' RT.
593+75.00	20.51' LT.	18.88' RT.
594+00.00	20.68' LT.	19.39' RT.
594+25.00	20.86' LT.	19.90' RT.
594+50.00	21.00' LT.	20.35' RT.
594+75.00	21.00' LT.	20.49' RT.
595+00.00	21.00' LT.	20.63' RT.
595+25.00	21.00' LT.	20.77' RT.
595+50.00	21.00' LT.	20.91' RT.

- PR CHANNELIZED ISLAND CONTROL POINTS
- (L1) STA. 587+71.31, 12.00' LT.
- (R1) STA. 590+70.36, 12.00' RT.
- (L2) STA. 590+70.36, 16.00' LT.
- (R2) STA. 591+80.36, 14.00' RT.
- (L3) STA. 594+45.96, 21.00' LT.
- (R3) STA. 595+65.41, 21.00' RT.
- (I3) STA. 595+65.41, 9.00' RT.

*NOTE: CONTROL POINTS DERIVED FROM THE IDOT "TRANSITIONAL APPROACHES TO CHANNELIZED INTERSECTIONS" JANUARY, 1962.

NAME	DATE

ILLINOIS DEPARTMENT OF TRANSPORTATION

**INTERSECTION DETAIL
 TR 88 (725E) RAISED MEDIAN**

SCALE: 1" = 20'
 DATE: 03/06/2012

DRAWN BY: B.M.B.
 CHECKED BY: J.M.M.

Default L:\DOT\030601\Draw\Sheets\030601\Draw\IntSec\DeTR88_MedIcn.dgn 3/6/2012