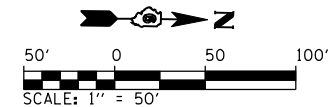
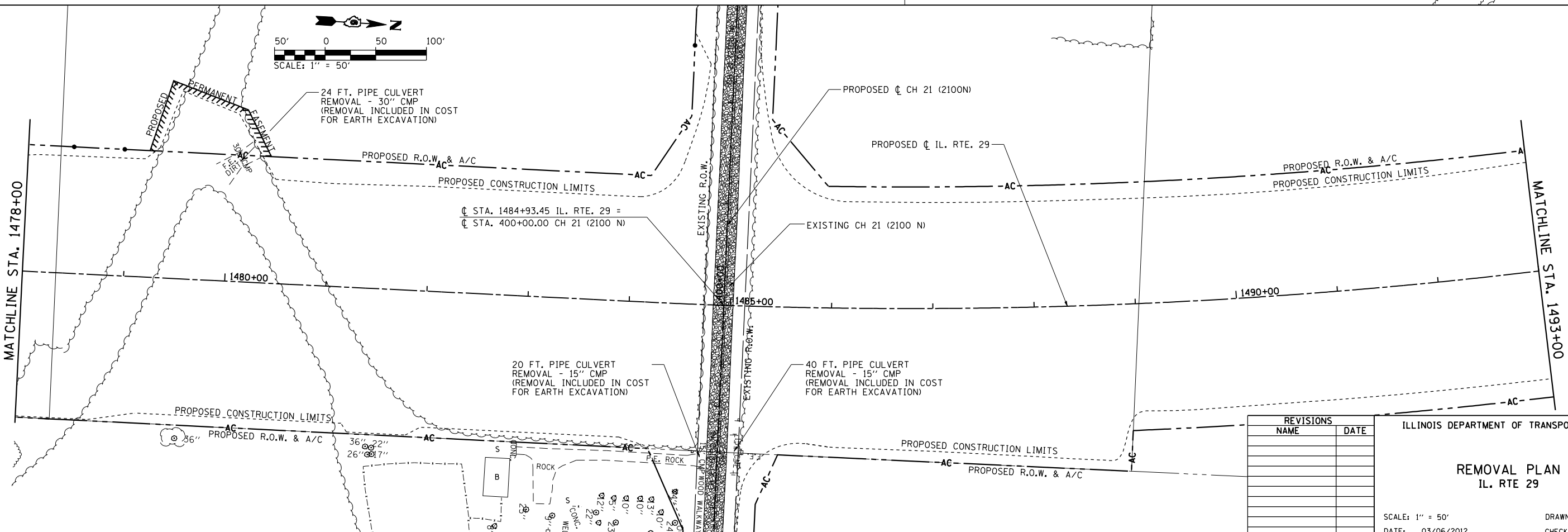
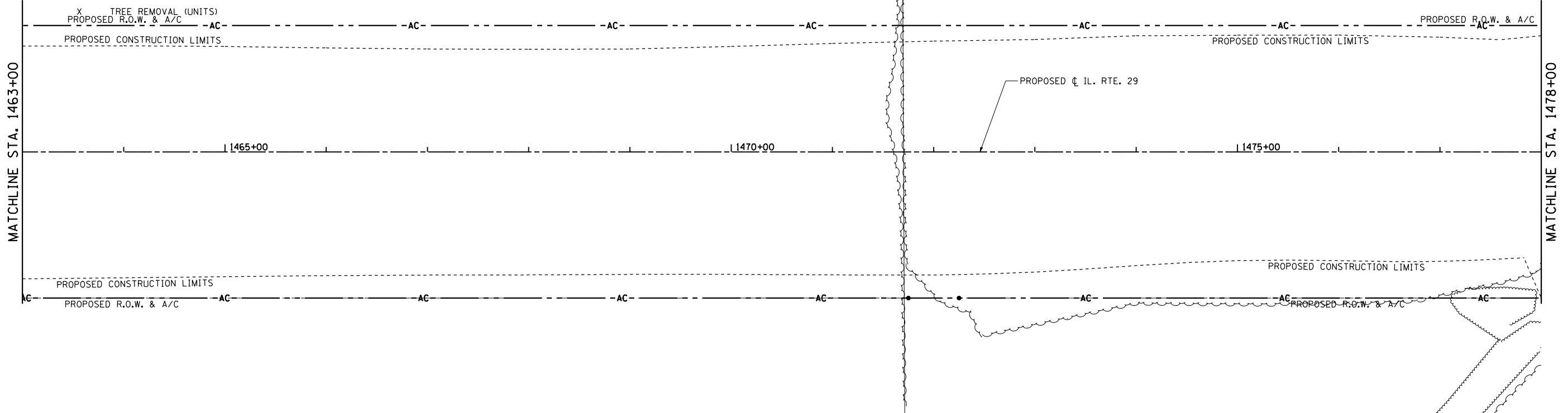


F.A.P. RTE.	SECTION	COUNTY	TOTAL SHEETS	SHEET NO.
75	84-12; 11-3		729	375
STA. 1463+00		TO STA. 1493+00		
FED. ROAD DIST. NO. 5 ILLINOIS FED. AID PROJECT				
• SANGAMON AND CHRISTIAN				



REMOVAL LEGEND

- | | | | |
|--|---|--|---|
| | ILLINOIS NATIVE PRARIE GRASS | | EXISTING OIL & CHIP PAVEMENT TO BE REMOVED. COST INCLUDED IN EARTH EXCAVATION |
| | PAVEMENT REMOVAL | | GRAVEL DRIVEWAY REMOVAL. COST INCLUDED IN EARTH EXCAVATION. |
| | PAVEMENT BREAKING IN ACCORDANCE WITH ARTICLE 205.03. COST INCLUDED IN EMBANKMENT. | | PAVED SHOULDER REMOVAL |
| | TREE REMOVAL ACRES | | HMA SURFACE REMOVAL |



REVISIONS	
NAME	DATE

ILLINOIS DEPARTMENT OF TRANSPORTATION

REMOVAL PLAN
IL. RTE 29

SCALE: 1" = 50'
DATE: 03/06/2012

DRAWN BY: R.A.H.
CHECKED BY: J.M.M.

Default Li:\DOT\030600\Draw\Sheets\030600\Draw\72829-sht-REM_003.dgn 4/23/2012