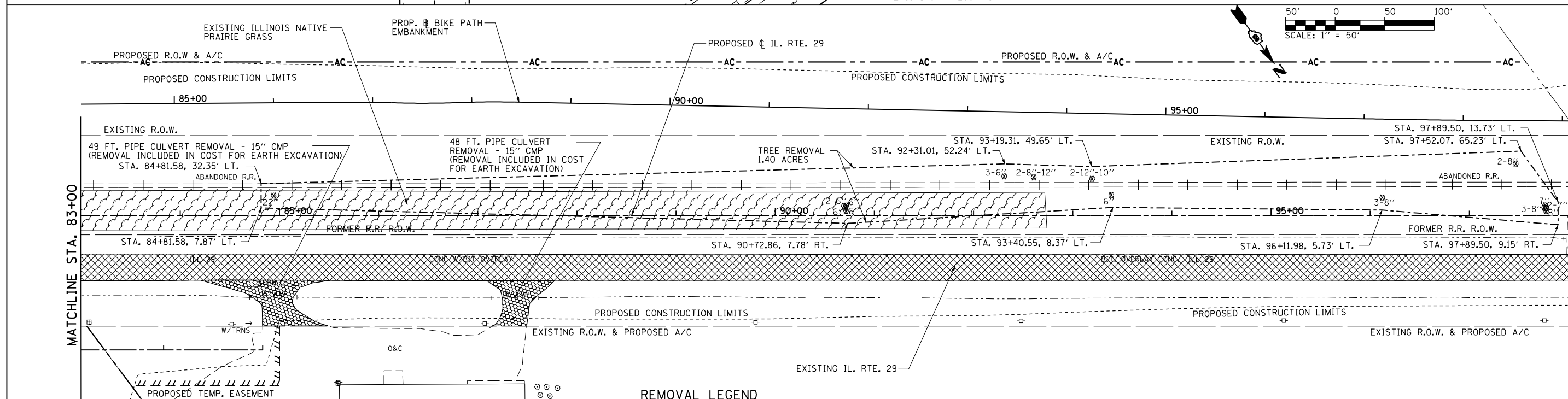
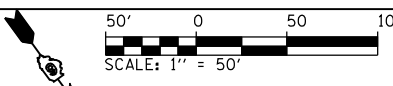
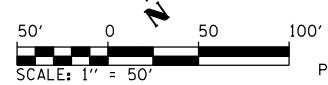
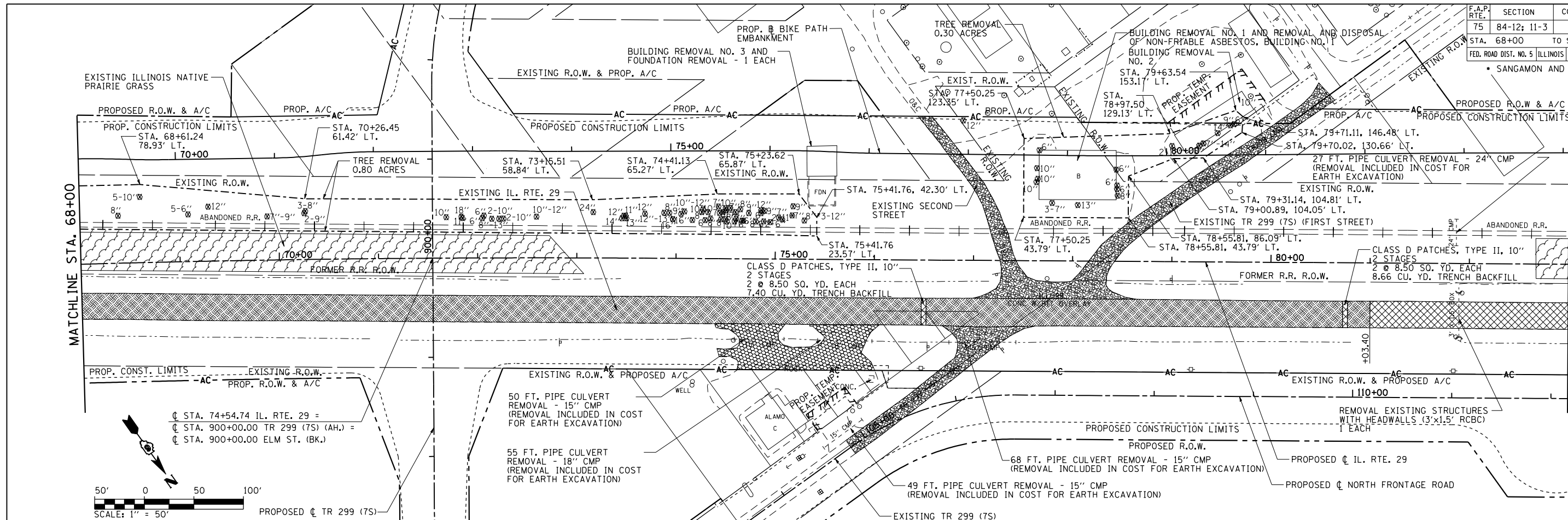


F.A.P. RTE.	SECTION	COUNTY	TOTAL SHEETS	SHEET NO.
75	84-12: 11-3		729	384
STA. 68+00 TO STA. 98+00				
FED. ROAD DIST. NO. 5 ILLINOIS FED. AID PROJECT				
SANGAMON AND CHRISTIAN				



REMOVAL LEGEND

- ILLINOIS NATIVE PRARIE GRASS
- PAVEMENT REMOVAL
- PAVEMENT BREAKING IN ACCORDANCE WITH ARTICLE 205.03. COST INCLUDED IN EMBANKMENT.
- TREE REMOVAL ACRES
- TREE REMOVAL (UNITS)
- EXISTING OIL & CHIP PAVEMENT TO BE REMOVED. COST INCLUDED IN EARTH EXCAVATION
- GRAVEL DRIVEWAY REMOVAL. COST INCLUDED IN EARTH EXCAVATION.
- PAVED SHOULDER REMOVAL
- HMA SURFACE REMOVAL

REVISIONS	
NAME	DATE

ILLINOIS DEPARTMENT OF TRANSPORTATION

**REMOVAL PLAN
IL. RTE 29**

SCALE: 1" = 50'
DATE: 03/06/2012

DRAWN BY: R.A.H.
CHECKED BY: J.M.M.

Default: L:\DOT\030601\Drawings\Sheets\030601\Drawings\030601-REM_01.dwg
4/24/2012