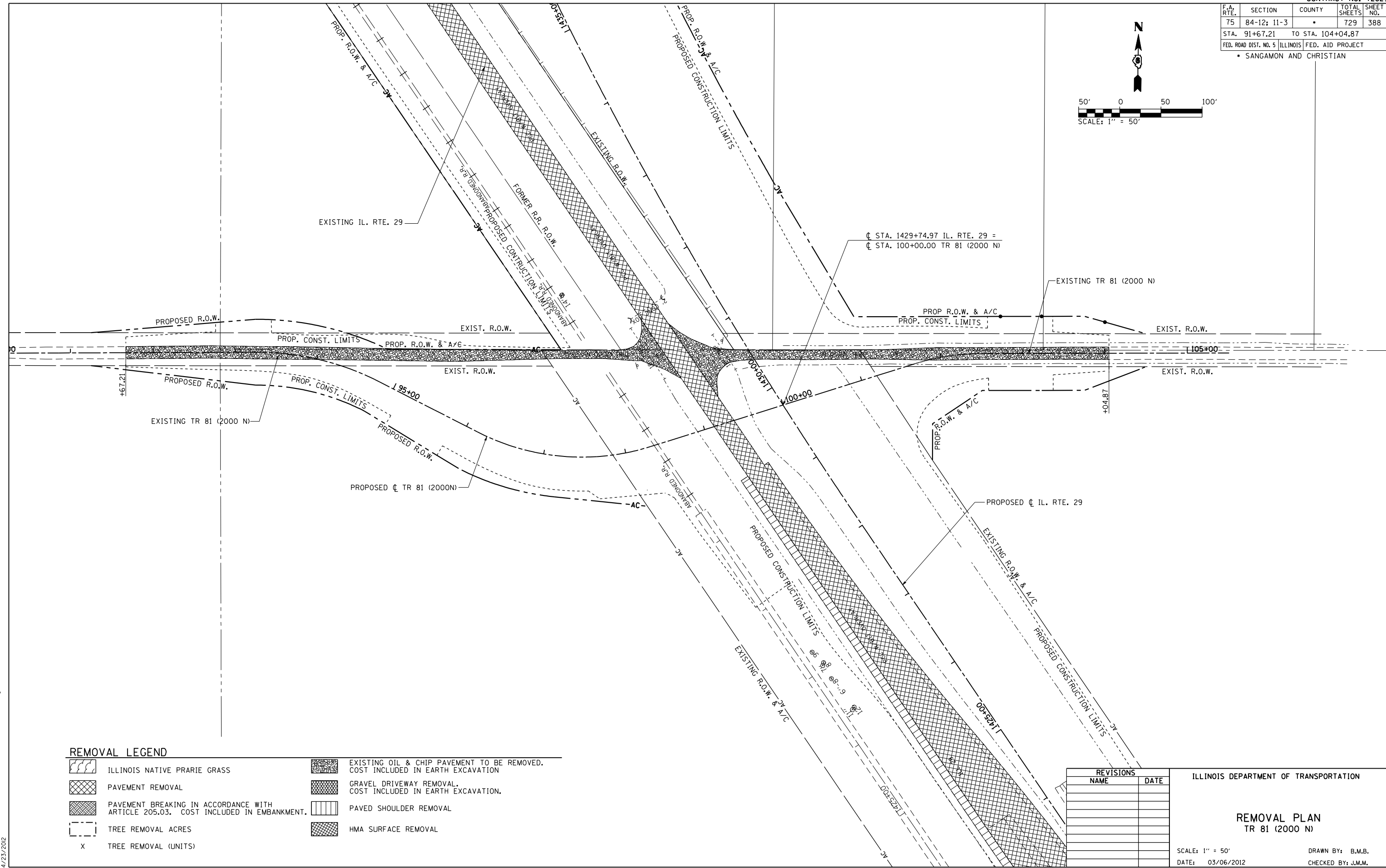
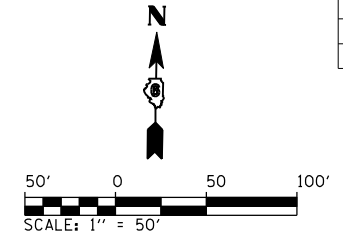


F.A. RTE.	SECTION	COUNTY	TOTAL SHEETS	SHEET NO.
75	84-12: 11-3	•	729	388
STA. 91+67.21		TO STA. 104+04.87		
FED. ROAD DIST. NO. 5 ILLINOIS FED. AID PROJECT				
• SANGAMON AND CHRISTIAN				



REMOVAL LEGEND

ILLINOIS NATIVE PRARIE GRASS	EXISTING OIL & CHIP PAVEMENT TO BE REMOVED. COST INCLUDED IN EARTH EXCAVATION
PAVEMENT REMOVAL	GRAVEL DRIVEWAY REMOVAL. COST INCLUDED IN EARTH EXCAVATION.
PAVEMENT BREAKING IN ACCORDANCE WITH ARTICLE 205.03. COST INCLUDED IN EMBANKMENT.	PAVED SHOULDER REMOVAL
TREE REMOVAL ACRES	HMA SURFACE REMOVAL
X TREE REMOVAL (UNITS)	

REVISIONS	
NAME	DATE

ILLINOIS DEPARTMENT OF TRANSPORTATION

REMOVAL PLAN
TR 81 (2000 N)

SCALE: 1" = 50'
DATE: 03/06/2012

DRAWN BY: B.M.B.
CHECKED BY: J.M.M.

Default: L:\D007\030601\Draw\Sheets\D672829-sht-REM_015.dgn 4/23/2012