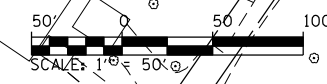
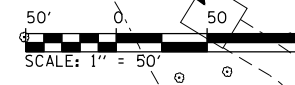
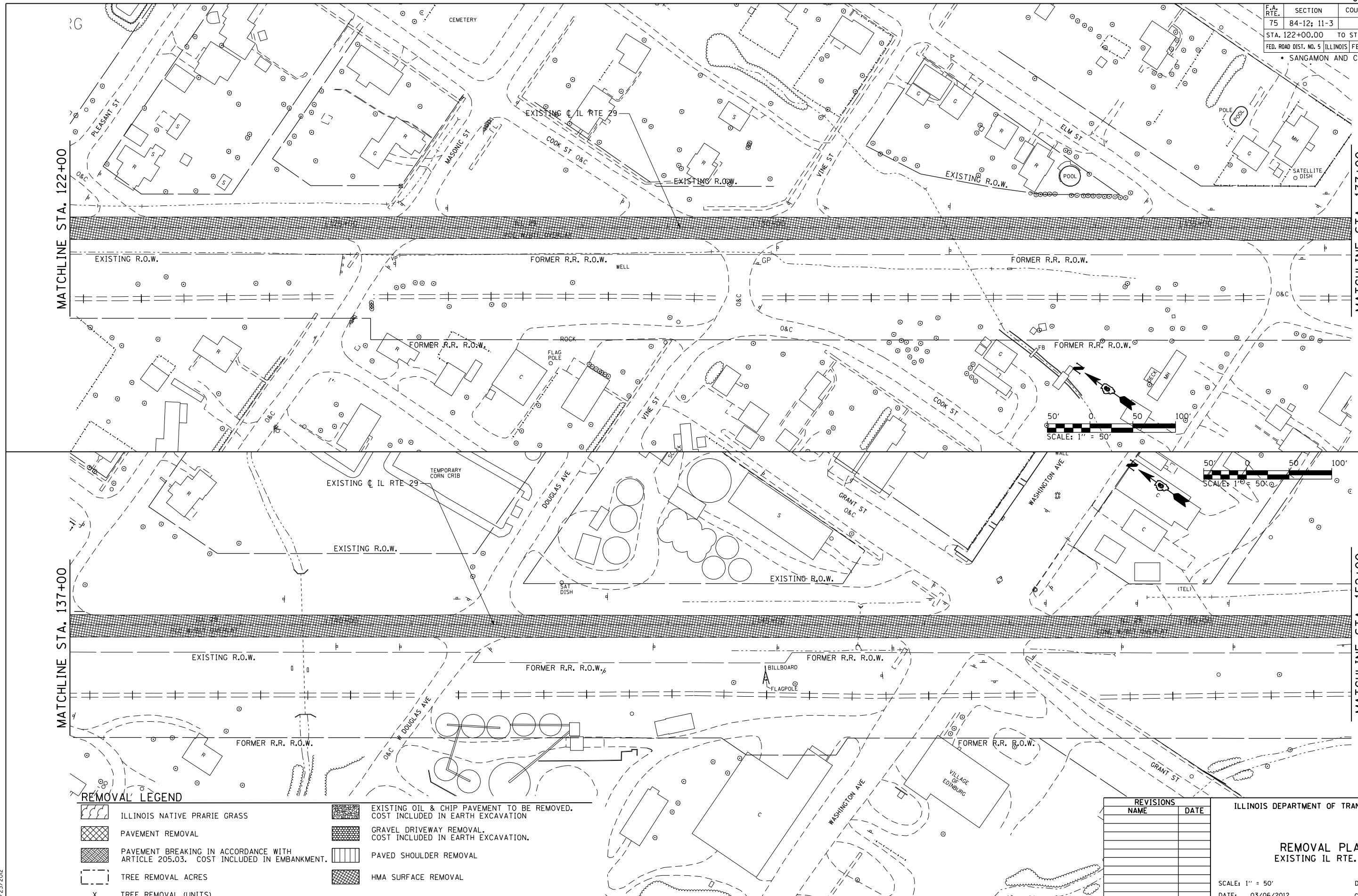


F.A. RTE.	SECTION	COUNTY	TOTAL SHEETS	SHEET NO.
75	84-12: 11-3	•	729	403
STA. 122+00.00 TO STA. 152+00.00				
FED. ROAD DIST. NO. 5 ILLINOIS FED. AID PROJECT				
• SANGAMON AND CHRISTIAN				



REMOVAL LEGEND

- | | | | |
|--|---|--|---|
| | ILLINOIS NATIVE PRARIE GRASS | | EXISTING OIL & CHIP PAVEMENT TO BE REMOVED. COST INCLUDED IN EARTH EXCAVATION |
| | PAVEMENT REMOVAL | | GRAVEL DRIVEWAY REMOVAL. COST INCLUDED IN EARTH EXCAVATION. |
| | PAVEMENT BREAKING IN ACCORDANCE WITH ARTICLE 205.03. COST INCLUDED IN EMBANKMENT. | | PAVED SHOULDER REMOVAL |
| | TREE REMOVAL ACRES | | HMA SURFACE REMOVAL |
| | X TREE REMOVAL (UNITS) | | |

REVISIONS	
NAME	DATE

ILLINOIS DEPARTMENT OF TRANSPORTATION

REMOVAL PLAN
EXISTING IL RTE. 29

SCALE: 1" = 50'
DATE: 03/06/2012

DRAWN BY: B.M.B.
CHECKED BY: J.M.M.

Default L:\DOT\030601\Draw\Sheets\030601\Draw\72829-sht-rem-030.dgn 4/23/2012