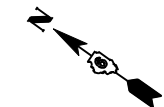
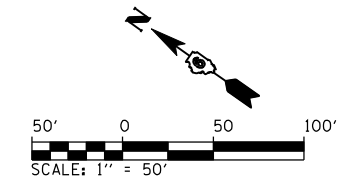
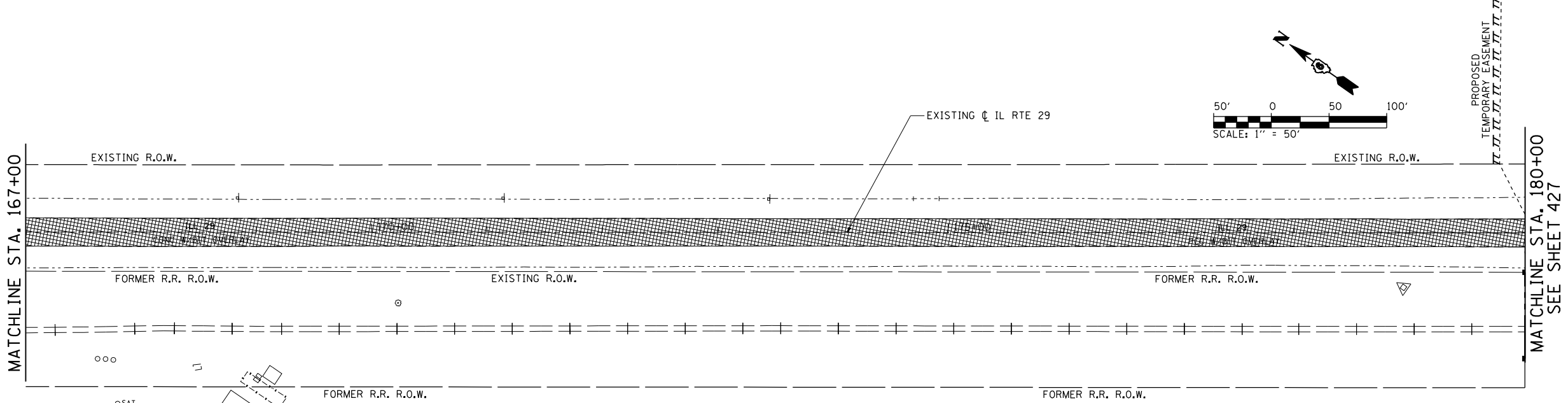
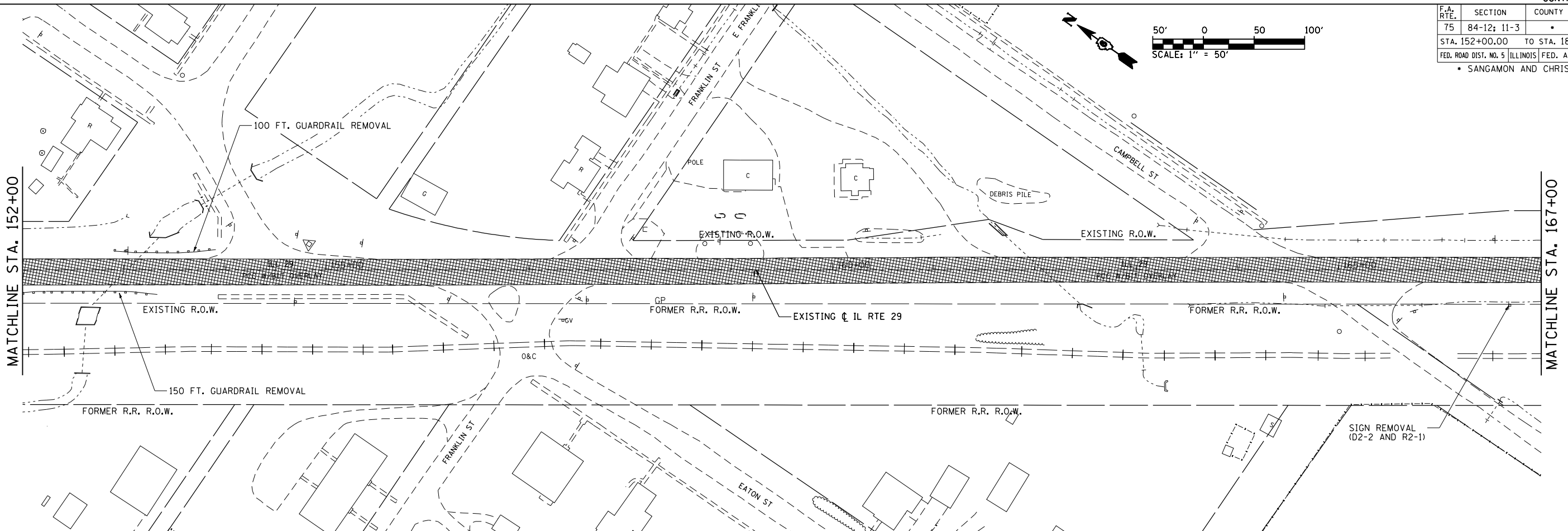
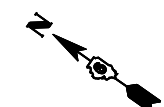


F.A. RTE.	SECTION	COUNTY	TOTAL SHEETS	SHEET NO.
75	84-12: 11-3	•	729	404
STA. 152+00.00		TO STA. 180+00.00		
FED. ROAD DIST. NO. 5 ILLINOIS FED. AID PROJECT				
• SANGAMON AND CHRISTIAN				



REMOVAL LEGEND

	ILLINOIS NATIVE PRARIE GRASS		EXISTING OIL & CHIP PAVEMENT TO BE REMOVED. COST INCLUDED IN EARTH EXCAVATION
	PAVEMENT REMOVAL		GRAVEL DRIVEWAY REMOVAL. COST INCLUDED IN EARTH EXCAVATION.
	PAVEMENT BREAKING IN ACCORDANCE WITH ARTICLE 205.03. COST INCLUDED IN EMBANKMENT.		PAVED SHOULDER REMOVAL
	TREE REMOVAL ACRES		HMA SURFACE REMOVAL
X	TREE REMOVAL (UNITS)		

REVISIONS	
NAME	DATE

ILLINOIS DEPARTMENT OF TRANSPORTATION

REMOVAL PLAN
EXISTING IL RTE. 29

SCALE: 1" = 50'
DATE: 03/06/2012

DRAWN BY: B.M.B.
CHECKED BY: J.M.M.

Default
L:\D001\030660\Draw\Sheets\030660\Draw\72829-sht-rem-03.dgn
4/23/2012