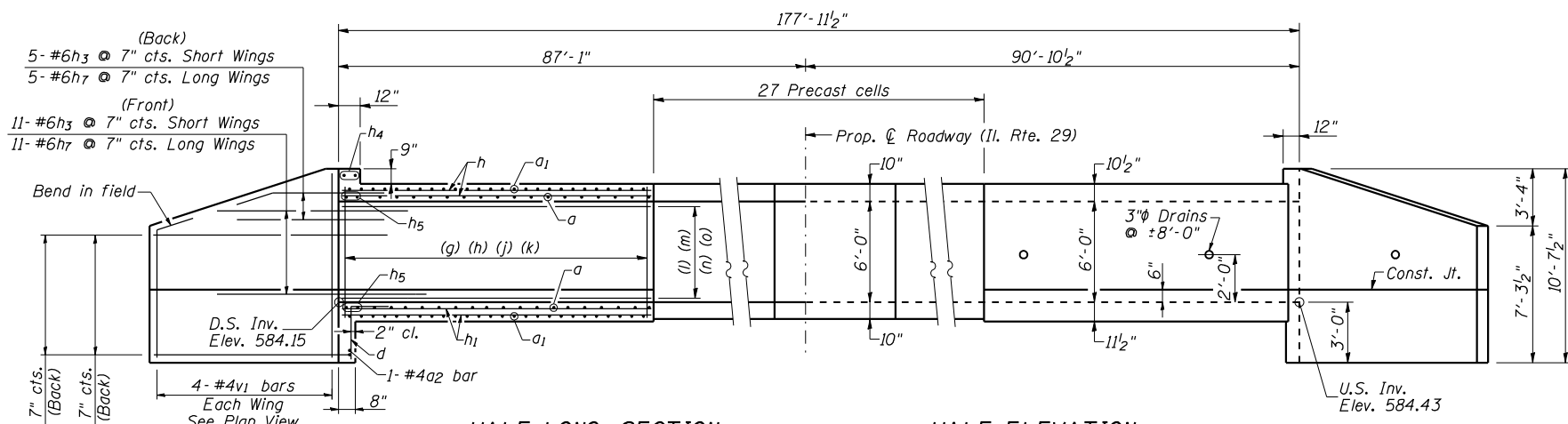
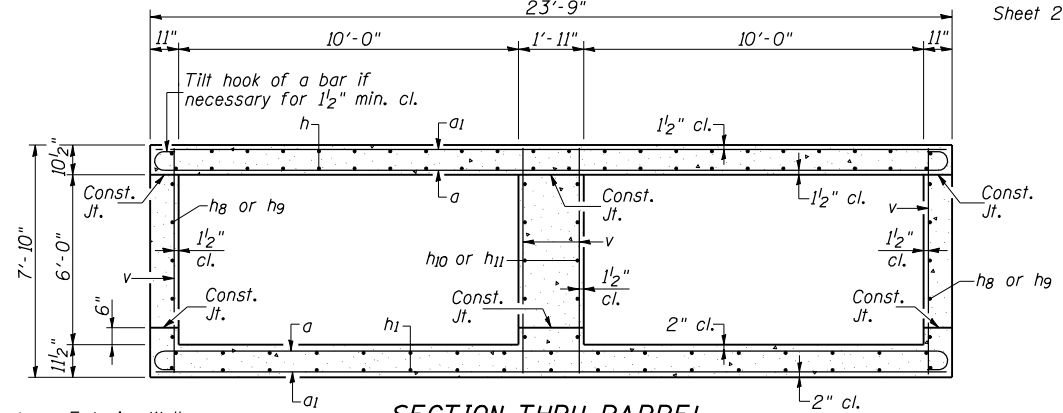


F.A. RTE.	SECTION	COUNTY	TOTAL SHEETS	SHEET NO.
75	84-12: 11-3		729	458
STA.	TO STA.			
FED. ROAD DIST. NO. 5 ILLINOIS FED. AID PROJECT				
SANGAMON AND CHRISTIAN				

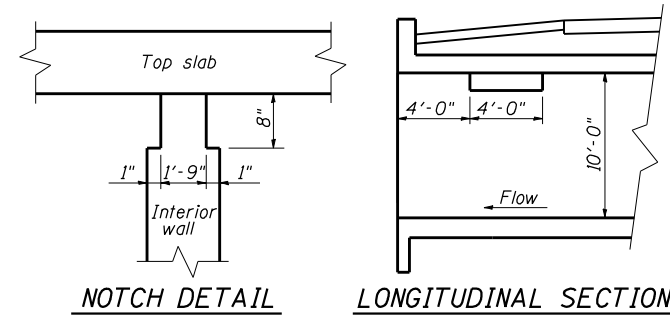


HALF LONG SECTION HALF ELEVATION

Dimensions at Rt. L's to C/L Roadway



SECTION THRU BARREL



NOTCH DETAIL LONGITUDINAL SECTION

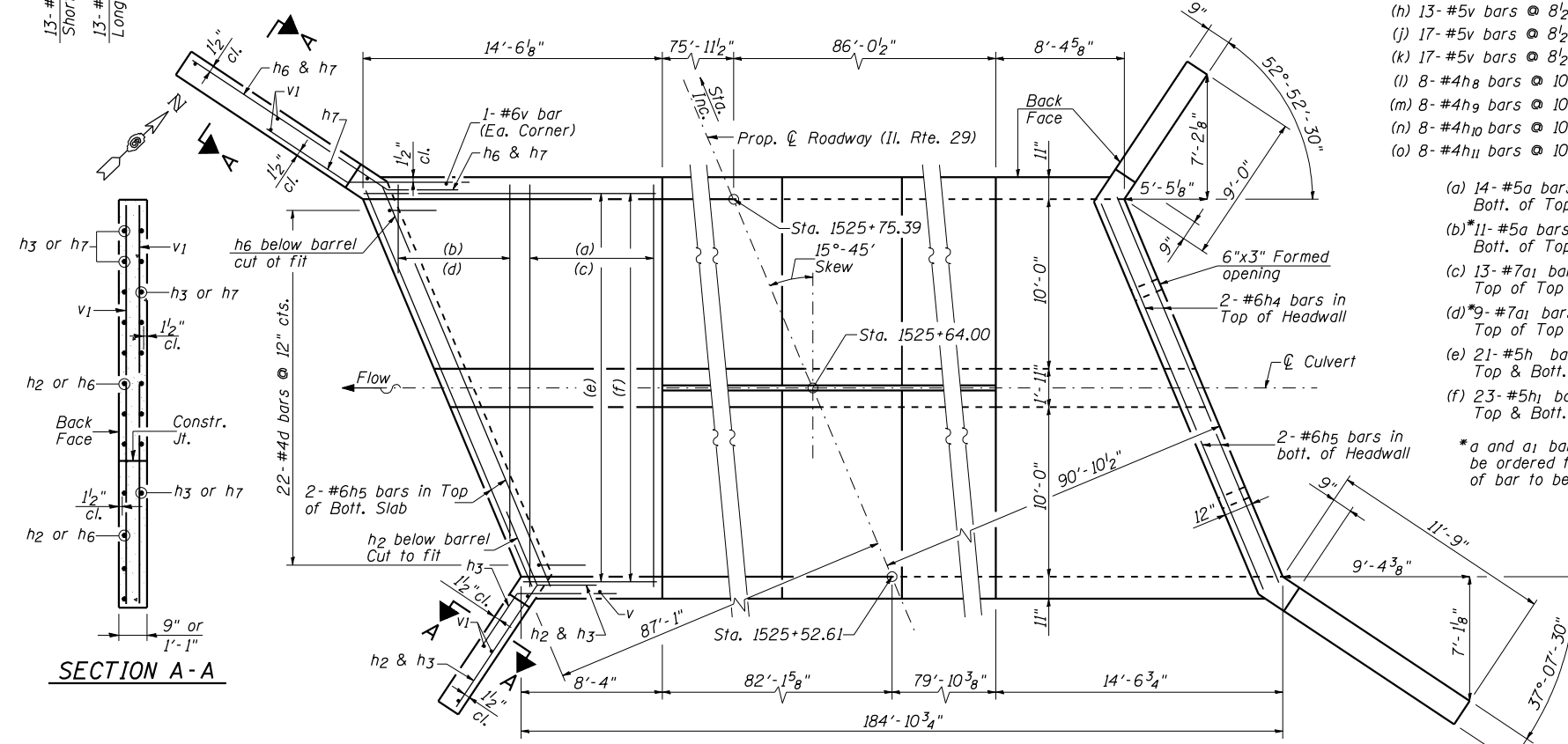
PHOEBE NESTING SITE DETAIL

(Near Downstream End)
 Note: Notch formed by rough-finished board attached to and removed with formwork.

- (g) 21-#5v bars @ 8 1/2" cts. Long Exterior Wall
- (h) 13-#5v bars @ 8 1/2" cts. Short Exterior Wall
- (j) 17-#5v bars @ 8 1/2" cts. Longer Face of Interior Wall
- (k) 17-#5v bars @ 8 1/2" cts. Shorter Face of Interior Wall
- (l) 8-#4h8 bars @ 10" cts. Long Exterior Wall
- (m) 8-#4h9 bars @ 10" cts. Short Exterior Wall
- (n) 8-#4h10 bars @ 10" cts. Longer Face of Interior Wall
- (o) 8-#4h11 bars @ 10" cts. Shorter Face of Interior Wall

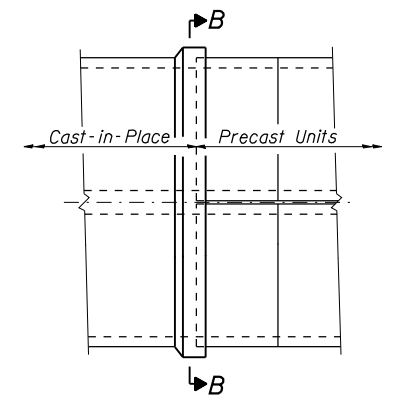
- (a) 14-#5a bars @ 7" cts. Bott. of Top Slab & Top of Bott. slab
- (b) 11-#5a bars @ 7" cts. Bott. of Top Slab & Top of Bott. slab
- (c) 13-#7a1 bars @ 8" cts. Top of Top Slab & Bott. of Bott. slab
- (d) 9-#7a1 bars @ 8" cts. Top of Top Slab & Bott. of Bott. slab
- (e) 21-#5h bars @ 1'-2" cts. Top & Bott. of Top Slab
- (f) 23-#5h1 bars @ 1'-1" cts. Top & Bott. of Bott. Slab

*a and a1 bars in skew portion of slab shall be ordered full length & cut to fit. Balance of bar to be used in opposite end of culvert.

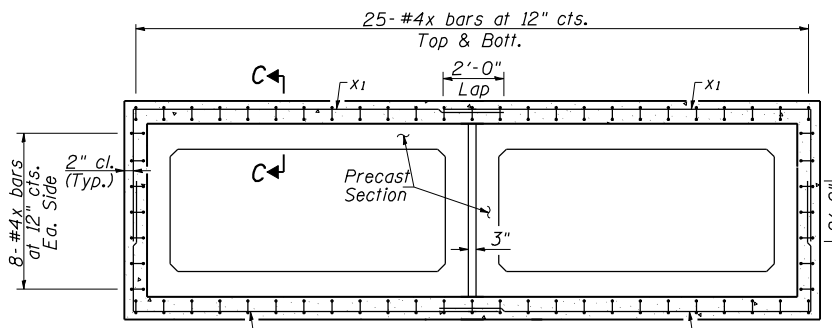


SHOWING REINFORCEMENT SHOWING OUTLINES

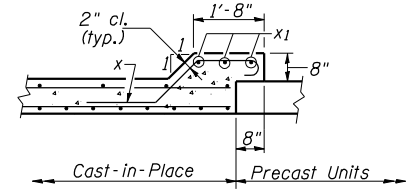
PLAN



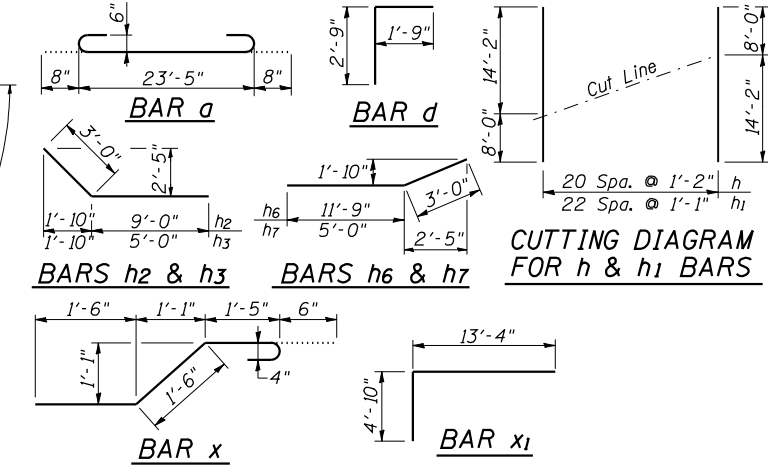
SECTION A-A PRECAST TO CAST-IN-PLACE CONNECTION COLLAR



SECTION B-B



SECTION C-C



CUTTING DIAGRAM FOR h & h1 BARS

BILL OF MATERIAL

Bar	No.	Size	Length	Shape
a	78	#5	24'-9"	
a1	70	#7	23'-5"	
a2	2	#4	24'-0"	
d	44	#4	4'-6"	
h	42	#5	22'-2"	
h1	46	#5	22'-2"	
h2	26	#6	12'-0"	
h3	32	#6	8'-0"	
h4	4	#6	23'-3"	
h5	8	#6	24'-3"	
h6	26	#6	14'-9"	
h7	32	#6	8'-0"	
h8	16	#4	14'-2"	
h9	16	#4	8'-0"	
h10	16	#4	10'-10"	
h11	16	#4	11'-4"	
v	140	#5	7'-6"	
v1	16	#4	10'-3"	
x	132	#4	4'-11"	
x1	24	#4	18'-2"	
Concrete Box Culverts				Cu. Yd. 77.0
Reinforcement Bars				Pound 12,210

REVISIONS	
NAME	DATE

ILLINOIS DEPARTMENT OF TRANSPORTATION
 BOX CULVERT DETAILS
 PROPOSED STRUCTURE NO. 011-2515
 STA. 1525+64.00

SCALE: NONE DRAWN BY: GLD
 DATE: 03/06/2012 CHECKED BY: WLB