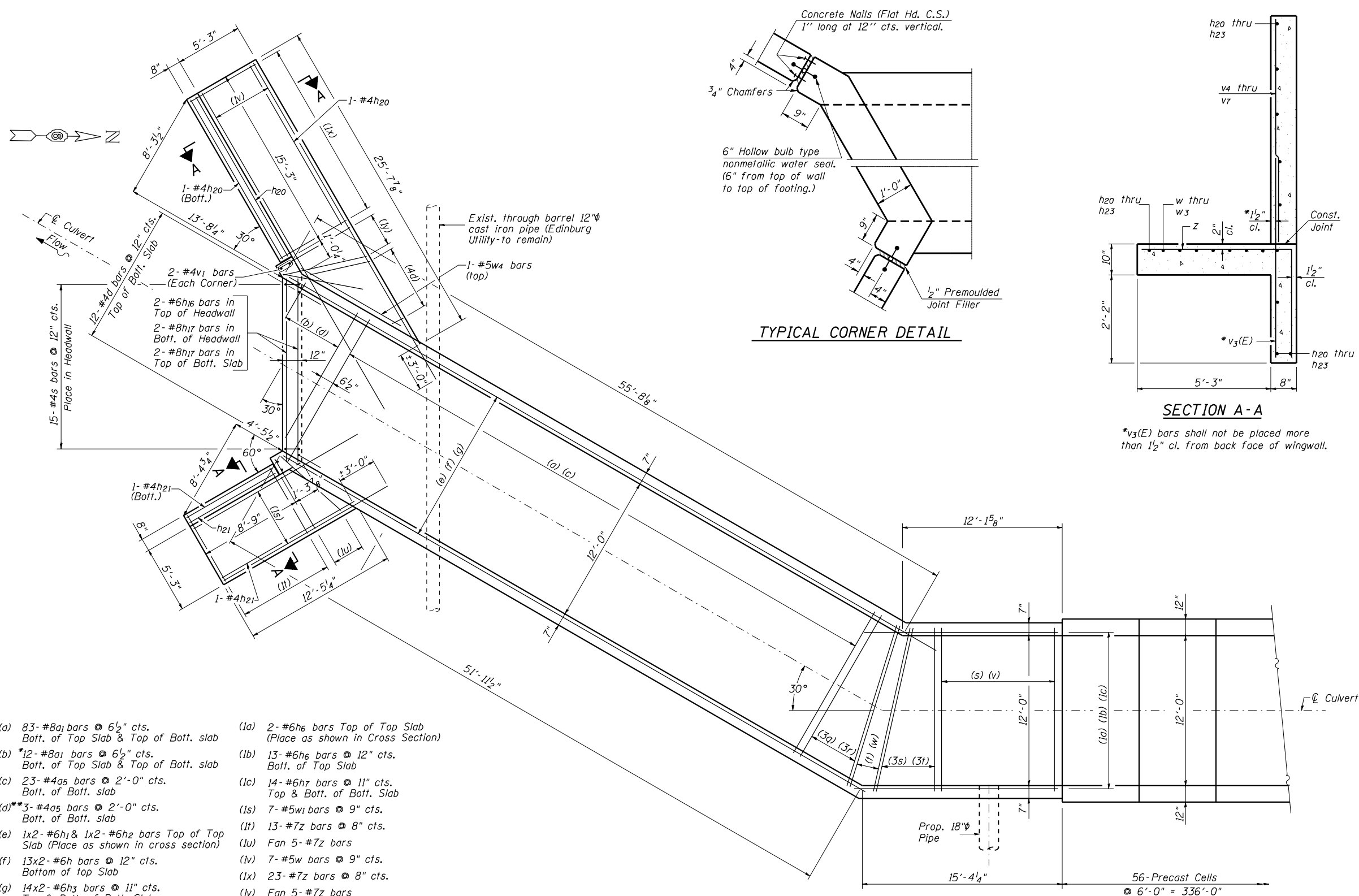


F.A. RTE.	SECTION	COUNTY	TOTAL SHEETS	SHEET NO.
75	84-12; 11-3		729	472
STA. N/A TO STA. N/A		FED. ROAD DIST. NO. 5 ILLINOIS FED. AID PROJECT		
SANGAMON AND CHRISTIAN				
Sheet 3 of 4 Sheets				

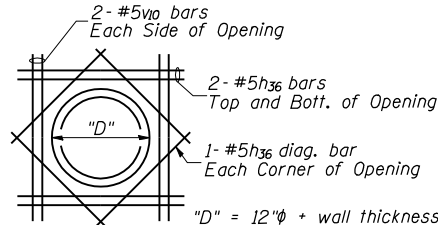


TYPICAL CORNER DETAIL

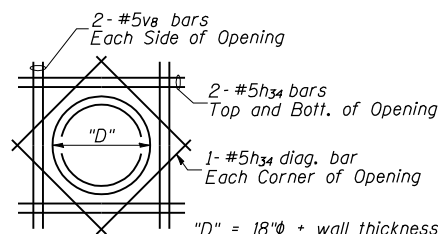
SECTION A-A

\*v<sub>3</sub>(E) bars shall not be placed more than 1/2" cl. from back face of wingwall.

ADDITIONAL REINF. FOR 12" PIPE OPENING  
(2 Location for Exist. Edinburg Utility)



ADDITIONAL REINF. FOR 18" PIPE OPENING



MINIMUM BAR LAP  
#6 Bar = 2'-1"

PARTIAL PLAN

- (a) 83-#8a<sub>1</sub> bars @ 6 1/2" cts. Bott. of Top Slab & Top of Bott. slab
- (b) 12-#8a<sub>1</sub> bars @ 6 1/2" cts. Bott. of Top Slab & Top of Bott. slab
- (c) 23-#4a<sub>5</sub> bars @ 2'-0" cts. Bott. of Bott. slab
- (d) 3-#4a<sub>5</sub> bars @ 2'-0" cts. Bott. of Bott. slab
- (e) 1x2-#6h<sub>1</sub> & 1x2-#6h<sub>2</sub> bars Top of Top Slab (Place as shown in cross section)
- (f) 13x2-#6h bars @ 12" cts. Bottom of top Slab
- (g) 14x2-#6h<sub>3</sub> bars @ 11" cts. Top & Bott. of Bott. Slab
- (s) 16-#8a<sub>1</sub> bars @ 6 1/2" cts. Bott. of Top Slab & Top of Bott. Slab
- (t) Fan 4-#8a<sub>2</sub> bars Bott. of Top Slab & Top of Bott. Slab
- (v) 5-#4a<sub>5</sub> bars @ 2'-0" cts. Bott. of Bott. Slab
- (w) Fan 1-#4a<sub>6</sub> bars Bott. of Bott. Slab
- (1a) 2-#6h<sub>6</sub> bars Top of Top Slab (Place as shown in Cross Section)
- (1b) 13-#6h<sub>6</sub> bars @ 12" cts. Bott. of Top Slab
- (1c) 14-#6h<sub>7</sub> bars @ 11" cts. Top & Bott. of Bott. Slab
- (1s) 7-#5w<sub>1</sub> bars @ 9" cts.
- (1t) 13-#7z bars @ 8" cts.
- (1u) Fan 5-#7z bars
- (1v) 7-#5w bars @ 9" cts.
- (1x) 23-#7z bars @ 8" cts.
- (1y) Fan 5-#7z bars
- (3q) Fan 11-#8a<sub>1</sub> bars Bott. of Top Slab & Top of Bott. Slab
- (3r) Fan 3-#4a<sub>5</sub> bars Bott. of Bott. Slab
- (3s) Fan 11-#8a<sub>1</sub> bars Bott. of Top Slab & Top of Bott. Slab
- (3t) Fan 3-#4a<sub>5</sub> bars Bott. of Bott. Slab
- (4d) 9-#7z<sub>1</sub> bars @ 8"\*\*\*

\*a<sub>1</sub> bars in skew portion of slab shall be ordered full length & cut to fit. Balance of bar to be used in same end of culvert Top of Bottom Slab.  
 \*\*a<sub>5</sub> bars in skew portion of slab shall be ordered full length & cut to fit.  
 \*\*\*z<sub>1</sub> bars shall be placed in footing ordered full length & cut to fit.

REVISIONS	
NAME	DATE

ILLINOIS DEPARTMENT OF TRANSPORTATION  
 BOX CULVERT  
 SO. END PARTIAL PLAN AND DETAILS  
 PROPOSED STRUCTURE NO. 011-7052  
 STA. 483+34.34  
 SCALE: NONE  
 DATE: 03/06/2012  
 DRAWN BY: GLD  
 CHECKED BY: WLB