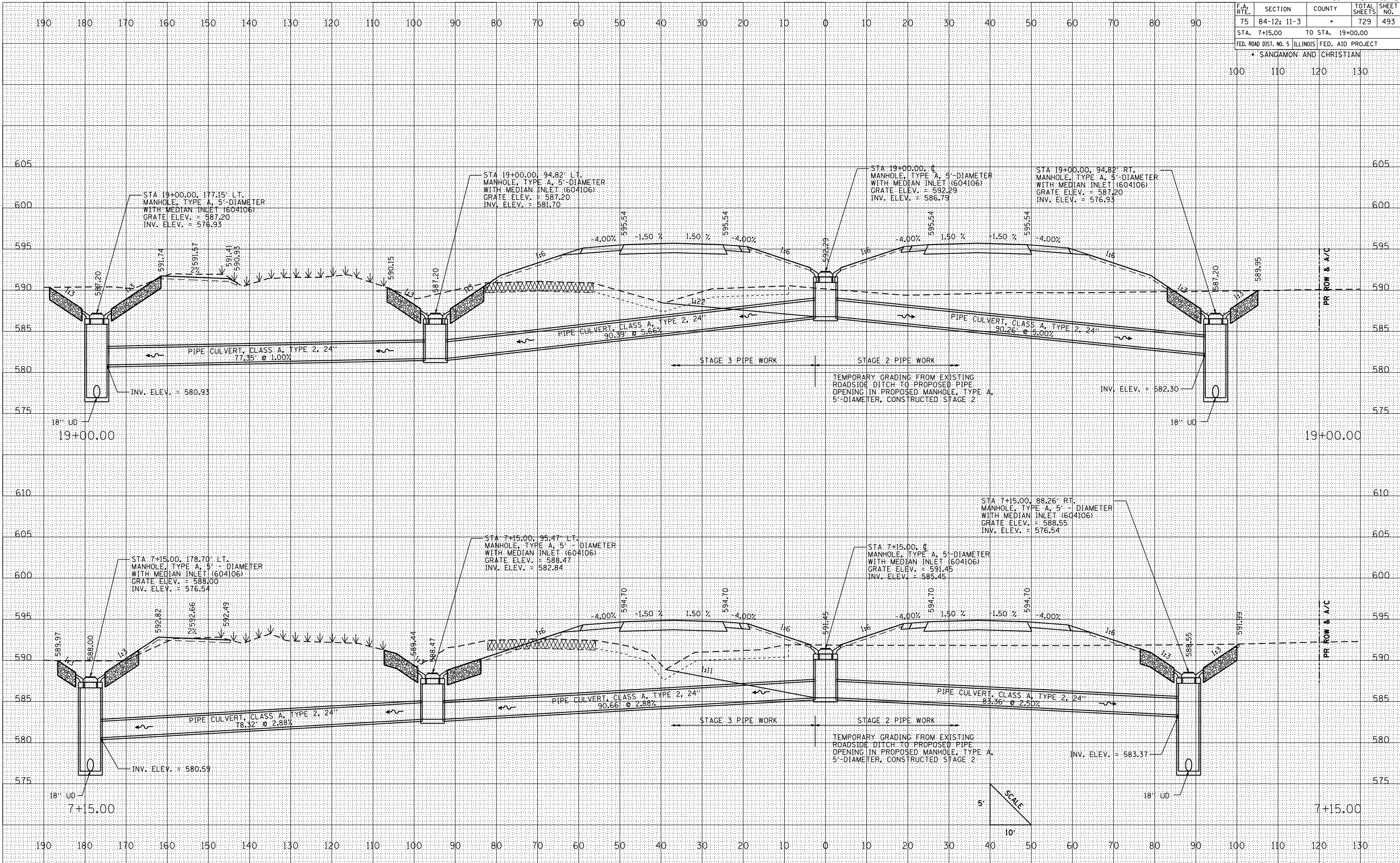


F.A. RTE.	SECTION	COUNTY	TOTAL SHEETS	SHEET NO.
75	84-12; 11-3		729	493
STA. 7+15.00		TO STA. 19+00.00		
FED. ROAD DIST. NO. 5 ILLINOIS FED. AID PROJECT				
• SANGAMON AND CHRISTIAN				
100	110	120	130	

DATE	
BY	
NO.	
FINAL SURVEY	
PLOTTED	
NOTE BOOK	
AREAS CHECKED	

DATE	
BY	
NO.	
ORIGINAL SURVEY	
PLOTTED	
NOTE BOOK	
AREAS CHECKED	

PLOT DATE = 2/16/2012
 FILE NAME = 211765.dwg
 PLOT SCALE = 1" = 10'
 REFERENCE = SHEET #



CULVERT PROFILES: IL RTE. 29 - STA. 7+15.00 TO STA. 19+00.00