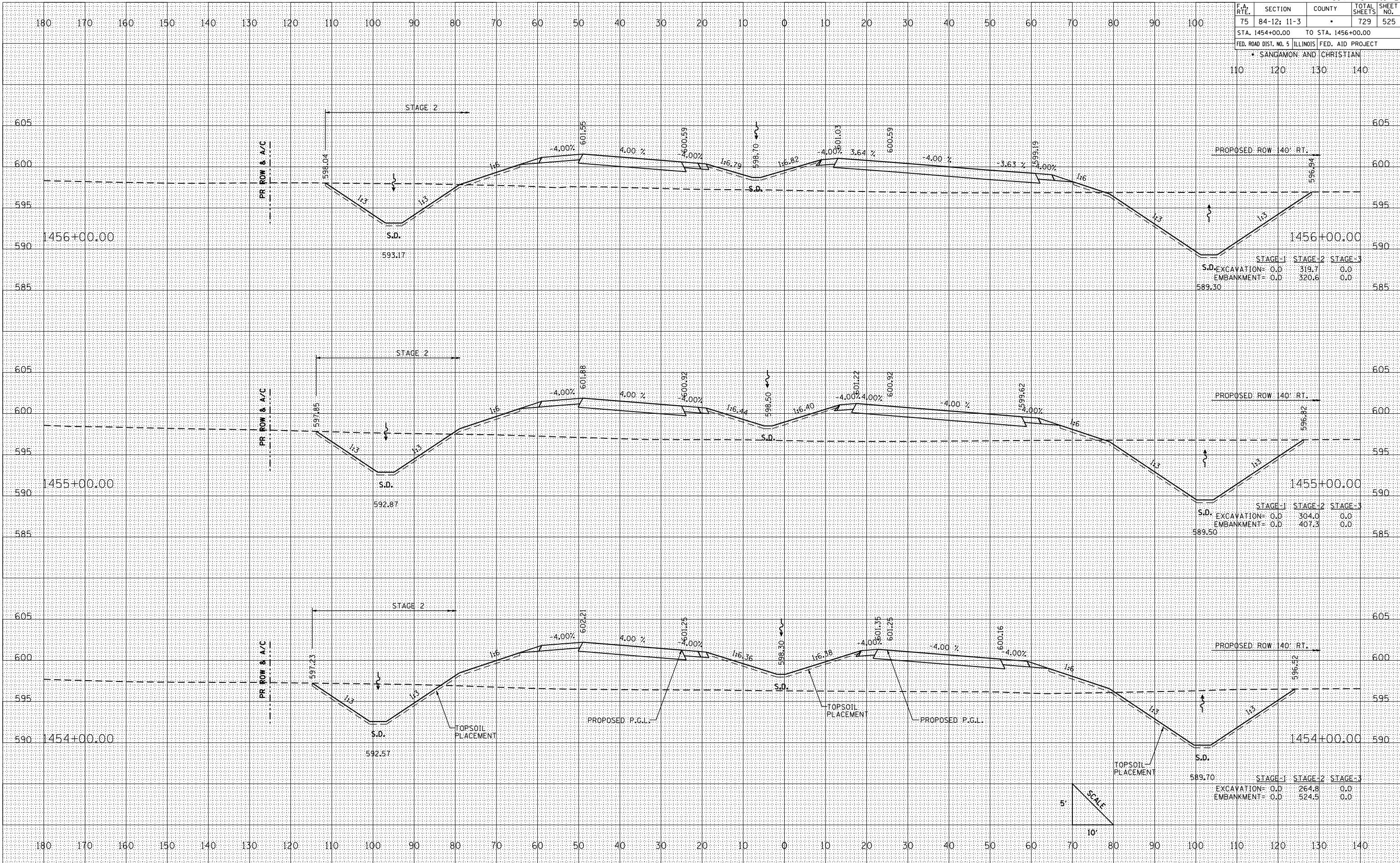


F.A. RTE.	SECTION	COUNTY	TOTAL SHEETS	SHEET NO.
75	84-12; 11-3	•	729	525
STA. 1454+00.00 TO STA. 1456+00.00				
FED. ROAD DIST. NO. 5 ILLINOIS FED. AID PROJECT				
• SANGAMON AND CHRISTIAN				
110	120	130	140	

DATE	
BY	
SURVEYED	
PLOTTED	
NOTE BOOK	
AREAS CHECKED	
NO.	

DATE	
BY	
SURVEYED	
PLOTTED	
NOTE BOOK	
AREAS CHECKED	
NO.	

PLOT DATE = 2/15/2012  
 FILE NAME = 0606601.dwg  
 PLOT SCALE = 1" = 20'  
 REFERENCE = SHEET #



CROSS SECTIONS: IL RTE. 29 - STA. 1454+00 TO STA. 1456+00