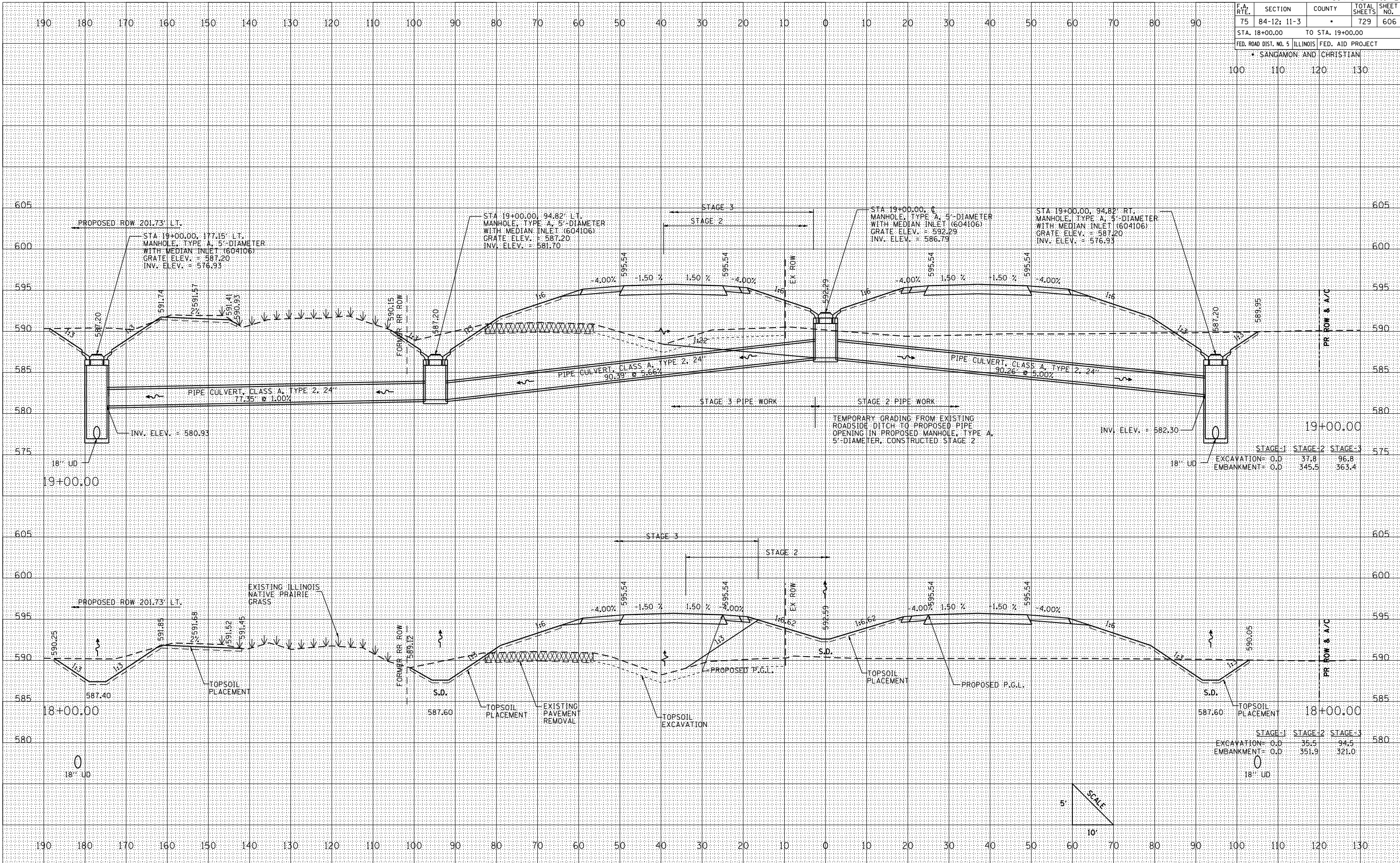


F.A. RTE.	SECTION	COUNTY	TOTAL SHEETS	SHEET NO.
75	84-12; 11-3		729	606
STA. 18+00.00		TO STA. 19+00.00		
FED. ROAD DIST. NO. 5 ILLINOIS FED. AID PROJECT				
SANGAMON AND CHRISTIAN				
100	110	120	130	

DATE	
BY	
FINAL SURVEY	
PLOTTED	
NOTE BOOK	
REVISIONS	
AREAS CHECKED	
NO.	

DATE	
BY	
ORIGINAL SURVEY	
PLOTTED	
REVISIONS	
AREAS CHECKED	
NO.	

PLOT DATE = 2/15/2012
 FILE NAME = 0806601.dwg
 PLOT SCALE = 21/768" / IN.
 REFERENCE = SHEET #



CROSS SECTIONS: IL RTE. 29 - STA. 18+00 TO STA. 19+00