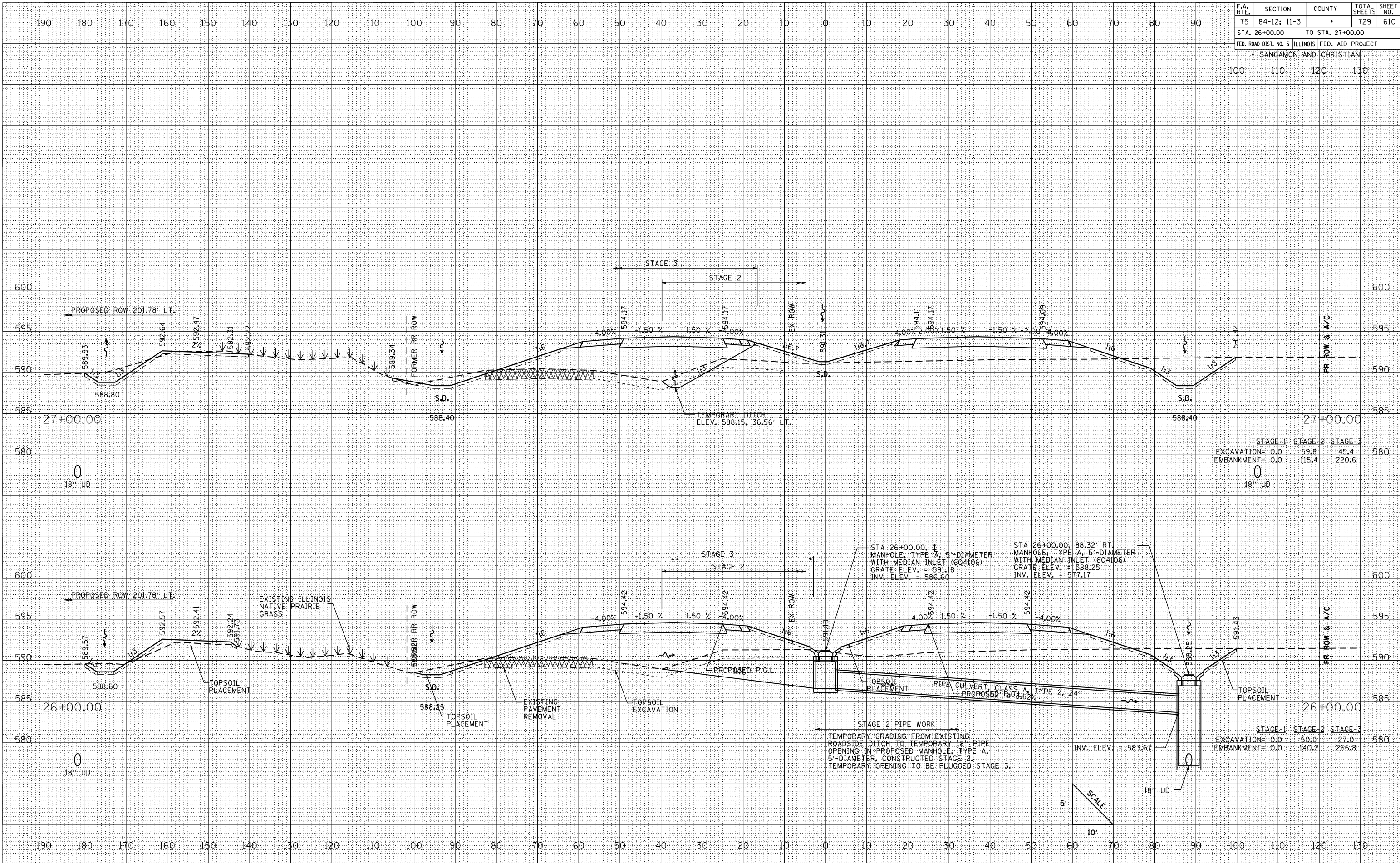


F.A. RTE.	SECTION	COUNTY	TOTAL SHEETS	SHEET NO.
75	84-12; 11-3		729	610
STA. 26+00.00		TO STA. 27+00.00		
FED. ROAD DIST. NO. 5 ILLINOIS FED. AID PROJECT				
• SANGAMON AND CHRISTIAN				
100	110	120	130	

DATE	
BY	
NO.	
FINAL SURVEY	
PLOTTED	
NOTE BOOK	
AREAS CHECKED	

DATE	
BY	
NO.	
ORIGINAL SURVEY	
PLOTTED	
NOTE BOOK	
AREAS CHECKED	

PLOT DATE = 2/16/2012
 FILE NAME = 0672829(660) 01-26+00-27+00.dwg
 PLOT SCALE = 21/768" / IN.
 REFERENCE = BREF#



STAGE-1 EXCAVATION= 0.0	STAGE-2 EXCAVATION= 59.8	STAGE-3 EXCAVATION= 45.4
STAGE-1 EMBANKMENT= 0.0	STAGE-2 EMBANKMENT= 115.4	STAGE-3 EMBANKMENT= 220.6

STAGE 2 PIPE WORK
 TEMPORARY GRADING FROM EXISTING ROADSIDE DITCH TO TEMPORARY 18" PIPE OPENING IN PROPOSED MANHOLE, TYPE A, 5'-DIAMETER, CONSTRUCTED STAGE 2. TEMPORARY OPENING TO BE PLUGGED STAGE 3.
 INV. ELEV. = 583.67

STAGE-1 EXCAVATION= 0.0	STAGE-2 EXCAVATION= 50.0	STAGE-3 EXCAVATION= 27.0
STAGE-1 EMBANKMENT= 0.0	STAGE-2 EMBANKMENT= 140.2	STAGE-3 EMBANKMENT= 266.8

