

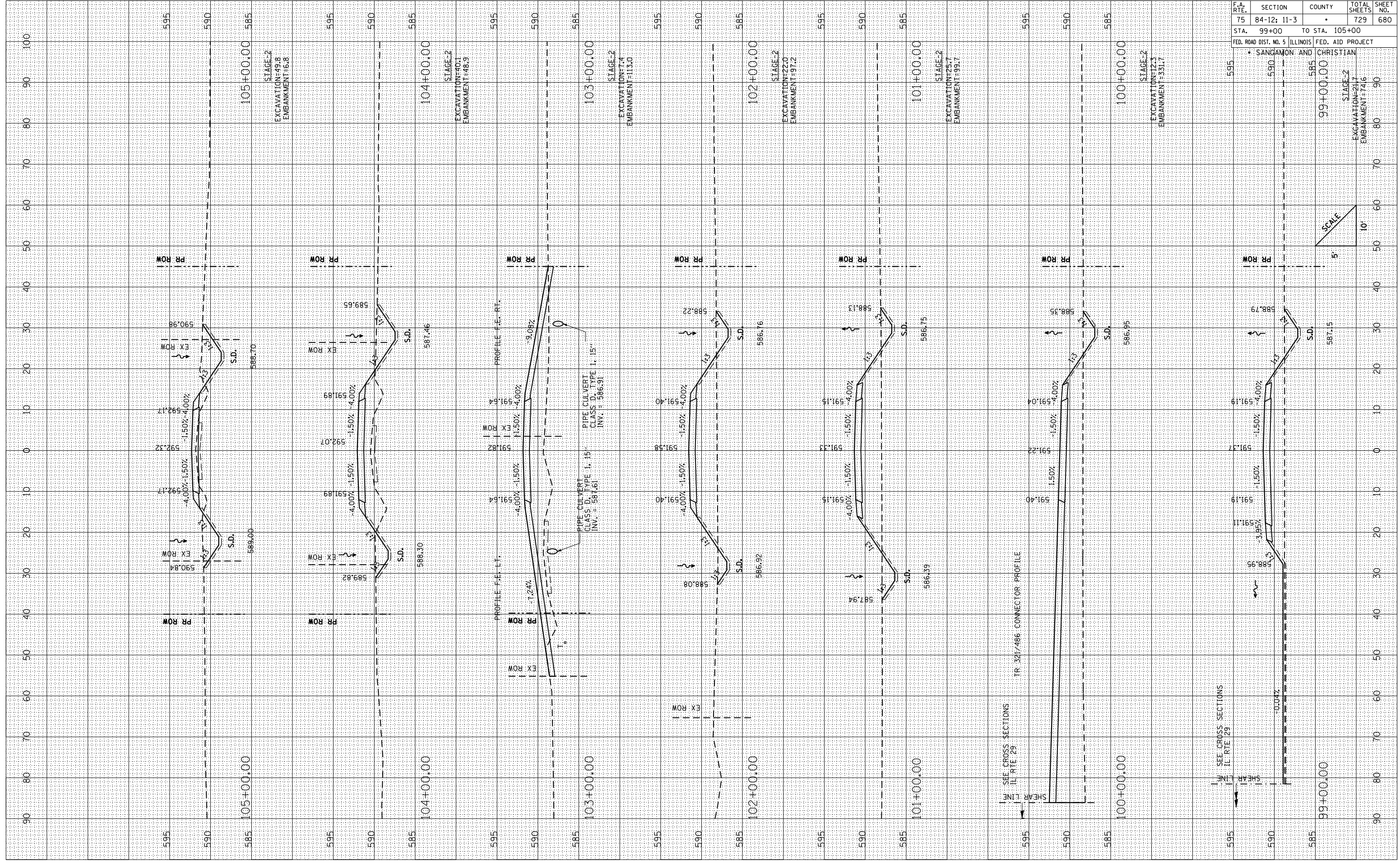
F.A. RTE.	SECTION	COUNTY	TOTAL SHEETS	SHEET NO.
75	84-12; 11-3	•	729	680
STA. 99+00		TO STA. 105+00		
FED. ROAD DIST. NO. 5 ILLINOIS FED. AID PROJECT				

• SANDAMON AND CHRISTIAN

FINAL SURVEY	BY	DATE
SURVEYED		
PLOTTED		
NOTE BOOK		
AREAS		
AREAS CHECKED		

ORIGINAL SURVEY	BY	DATE
SURVEYED		
PLOTTED		
NOTE BOOK		
AREAS		
AREAS CHECKED		

PLOT DATE = 3/16/2012
 FILE NAME = 20120329.dwg
 PLOT SCALE = 21/768" / IN.
 REFERENCE = \$REF\$



CROSS SECTIONS: TR 321 (7.5 S) - STA. 99+00 TO STA. 105+00