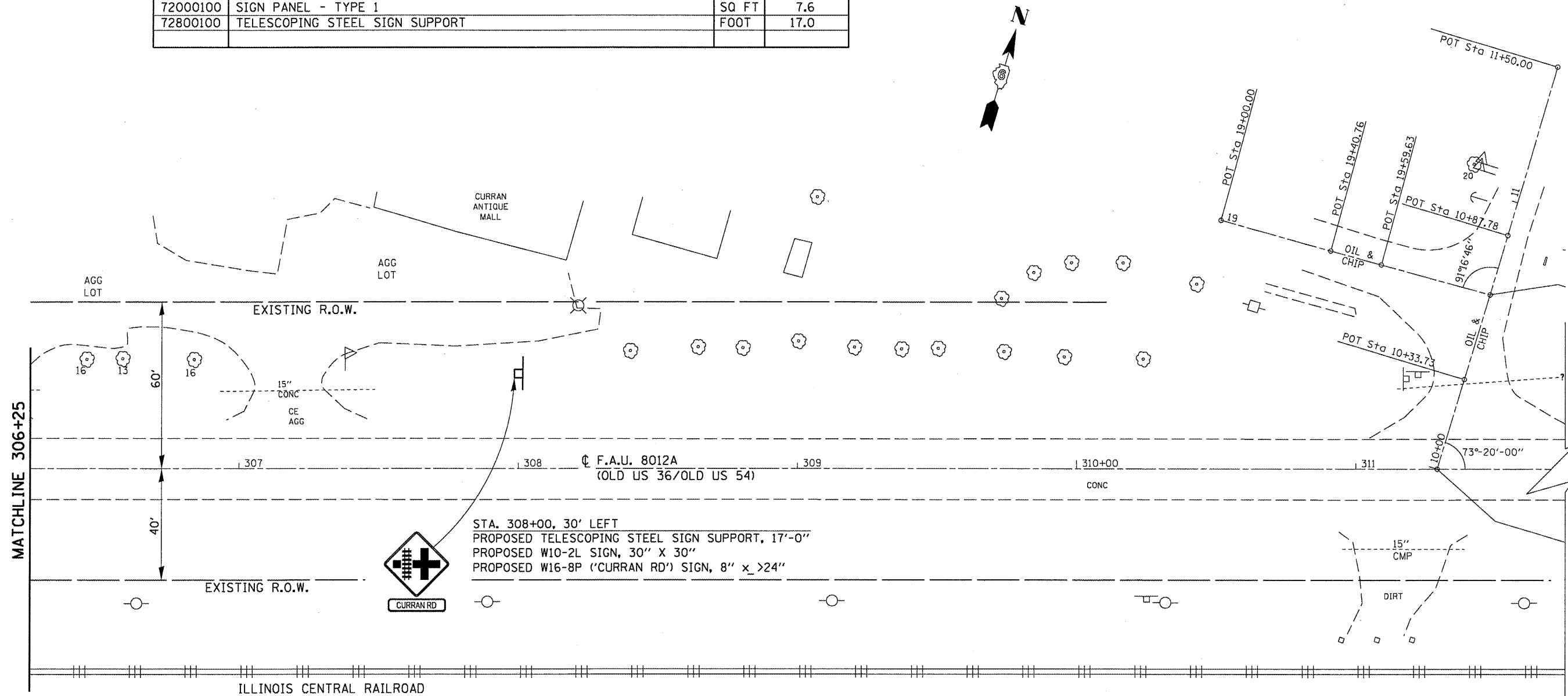


BILL OF MATERIALS (THIS SHEET ONLY)				
PAY CODE	ITEM DESCRIPTION	UNIT	QUANTITY	
72000100	SIGN PANEL - TYPE 1	SQ FT	7.6	
72800100	TELESCOPING STEEL SIGN SUPPORT	FOOT	17.0	



STA. 308+00, 30' LEFT
 PROPOSED TELESCOPING STEEL SIGN SUPPORT, 17'-0"
 PROPOSED W10-2L SIGN, 30" X 30"
 PROPOSED W16-8P ('CURRAN RD') SIGN, 8" x >24"

FILE NAME =	USER NAME = Slegler	DESIGNED -	REVISED -	STATE OF ILLINOIS DEPARTMENT OF TRANSPORTATION	LIGHTING PLAN SHEET		F.A.U. RTE. 8012A	SECTION 21L	COUNTY SANGAMON	TOTAL SHEETS 10	SHEET NO. 7	
CONTRACT NO. 72F06	CONTRACT NO. 72F06	DRAWN - RTS	REVISED -		SCALE:	SHEET 3 OF 4 SHEETS	STA.	TO STA.	ILLINOIS FED. AID PROJECT			
		CHECKED -	REVISED -									
		DATE - 10-11-11	REVISED -									