

06-15-12 LETTING ITEM 158

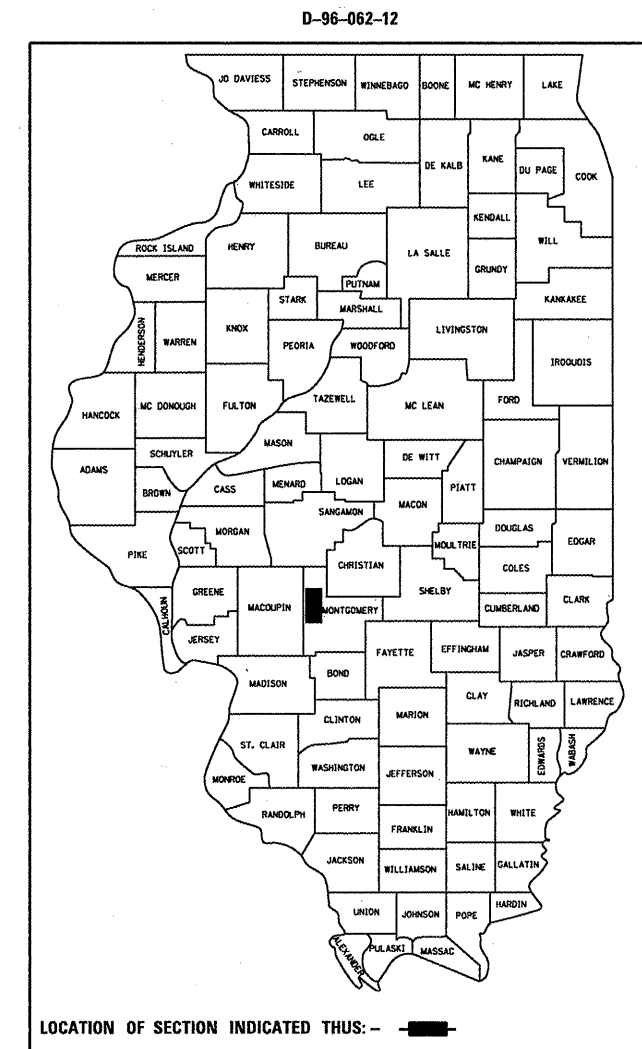
STATE OF ILLINOIS
DEPARTMENT OF TRANSPORTATION
DIVISION OF HIGHWAYS
**PROPOSED
CONTRACT MAINTENANCE**

FOR INDEX OF SHEETS, SEE SHEET NO. 2

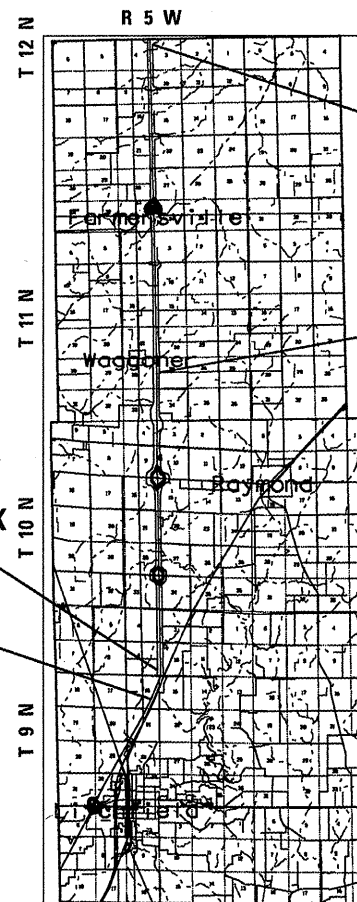
FAI 55 (I 55)
SECTION 68(1,2,3,4,5) PATCHING 2012

MONTGOMERY COUNTY

F.A.I. RTE.	SECTION	COUNTY	TOTAL SHEETS	SHEET NO.
55	68(1,2,3,4,5)PATCHING 2012	MONTGOMERY	7	1
FED. ROAD DIST. NO.	ILLINOIS	CONTRACT NO. 72F45		



C-96-062-12



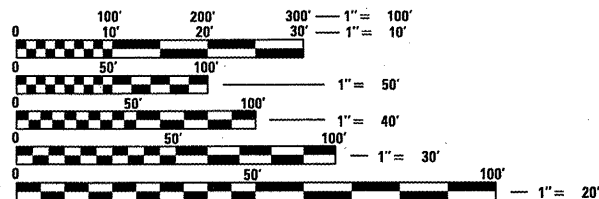
BEGIN PROJECT
STA 819 + 05

STA EQ. 1333 + 63.55BK
= 1333 + 60.23AH

STA EQ. 1801 + 09.15BK
= 1801 + 11.70AH

END PROJECT
STA 1819 + 40

FAI 55 ADT 28,700 (7,300)



FULL SIZE PLANS HAVE BEEN PREPARED USING STANDARD ENGINEERING SCALES. REDUCED SIZED PLANS WILL NOT CONFORM TO STANDARD SCALES. IN MAKING MEASUREMENTS ON REDUCED PLANS, THE ABOVE SCALES MAY BE USED.

J.U.L.I.E.
JOINT UTILITY LOCATION INFORMATION FOR EXCAVATION
1-800-892-0123
OR 811

PLAN AND CONTRACT TECHNICIAN
TIMOTHY SHARP (217)782-7743

CONTRACT NO. 72F45

STATE OF ILLINOIS
DEPARTMENT OF TRANSPORTATION
DIVISION OF HIGHWAYS

SUBMITTED April 10 20 12
Reginald D. Smith
DEPUTY DIRECTOR OF HIGHWAYS, REGION ENGINEER

May 11 20 12
John D. Baranzelli, P.E.
ENGINEER OF DESIGN AND ENVIRONMENT

May 11 20 12
William R. Frey, Jr.
DIRECTOR OF HIGHWAYS, CHIEF ENGINEER

**PRINTED BY THE AUTHORITY
OF THE STATE OF ILLINOIS**

INDEX

- 1 COVER
- 2 INDEX/STANDARDS/SIGNATURES
- 3-4 QUANTITIES
- 5 LOCATION MAP
- 6 TYPICAL SECTIONS
- 7 SCHEDULES

STANDARDS

- 442001-04
- 442101-07
- 701101-02
- 701106-02
- 701400-05
- 701401-06
- 701411-08
- 701456-02
- 701901-02

STATE OF ILLINOIS DEPARTMENT OF TRANSPORTATION DIVISION OF HIGHWAYS DISTRICT 6		
EXAMINED	April 10	20 12
	<i>William M. Boyer</i> ENGINEER OF OPERATIONS	
EXAMINED	APRIL 3	20 12
	<i>Tommy Z...</i> ENGINEER OF PROJECT IMPLEMENTATION	
EXAMINED	APRIL 4,	20 12
	<i>John C. W...</i> ENGINEER OF PROGRAM DEVELOPMENT	

MIXTURE REQUIREMENTS
THE FOLLOWING MIXTURE REQUIREMENTS
ARE APPLICABLE FOR THIS PROJECT

MIXTURE USE(S):	H.M.A. SHLD, TOP 2"	H.M.A. SHLD, LOWER LIFTS
AC/PG	PG 64-22	PG 58-22
DESIGN AIR VOIDS:	4.0% @ N DESIGN = 50	4.0% @ N DESIGN = 50
MIXTURE COMP:	IL 9.5 OR 12.5	IL 19.0
FRICTION AGG:	MIX C	N/A

INDEX/STANDARDS/SIGNATURES
FAI 55 (I 55)
SECTION 68(1,2,3,4,5) PATCHING 2012
MONTGOMERY COUNTY

S U M M A R Y O F Q U A N T I T I E S

CODE NO.	ITEM	UNIT	100% STATE
			0005 TOTAL QTY
44200610	CLASS A PATCHES, TYPE II, 13 INCH	SQ YD	114.8
44200612	CLASS A PATCHES, TYPE III, 13 INCH	SQ YD	80.0
44200620	CLASS A PATCHES, TYPE II, 14 INCH	SQ YD	37.3
44200624	CLASS A PATCHES, TYPE III, 14 INCH	SQ YD	32.0
44200982	CLASS B PATCHES, TYPE II, 11 INCH	SQ YD	74.9
44200988	CLASS B PATCHES, TYPE IV, 11 INCH	SQ YD	170.8
44201299	DOWEL BARS 1 1/2"	EACH	336
44213000	PATCH REINFORCEMENT	SQ YD	264.1
44213100	PAVEMENT FABRIC	SQ YD	170.8
44213200	SAW CUTS	FOOT	2,352
67100100	MOBILIZATION	L SUM	1
70100420	TRAFFIC CONTROL AND PROTECTION, STANDARD 701411	EACH	8
70100800	TRAFFIC CONTROL AND PROTECTION, STANDARD 701401	L SUM	1

QUANTITIES
FAI 55 (I 55)
SECTION 68(1,2,3,4,5) PATCHING 2012
MONTGOMERY COUNTY

S U M M A R Y O F Q U A N T I T I E S

CODE NO.	ITEM	UNIT	100% STATE
			0005
			TOTAL QTY
70100825	TRAFFIC CONTROL AND PROTECTION, STANDARD 701456	L SUM	1
70106800	CHANGEABLE MESSAGE SIGN	CAL MO	1
X4820110	HOT-MIX ASPHALT SHOULDER REMOVAL AND REPLACEMENT (SPECIAL)	SQ YD	150
70200100	NIGHTTIME WORK ZONE LIGHTING	L SUM	1



BEGIN
I 72 WORK

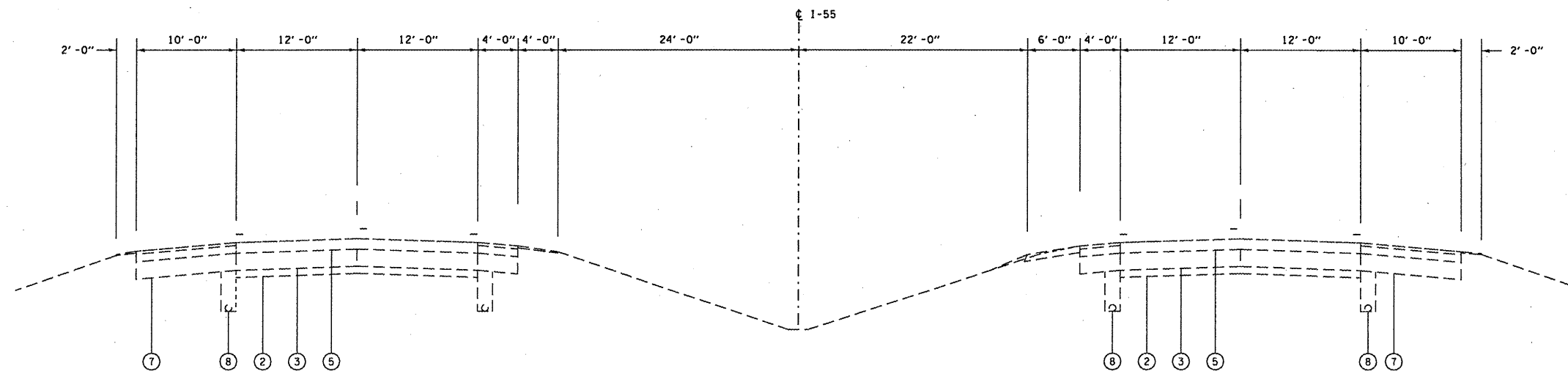
50



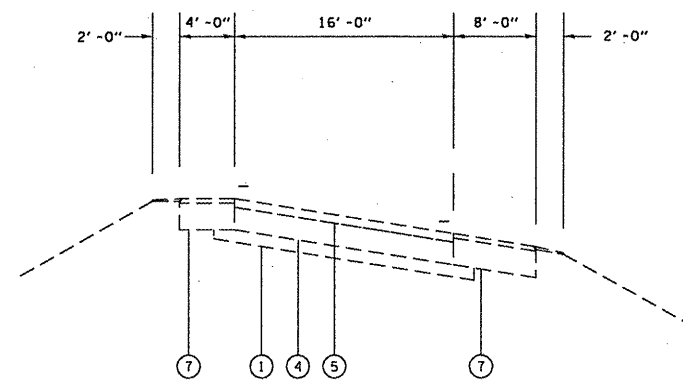
END I 55 WORK

PLAN
FAI 55 (I 55)
SECTION 86(1,2,3,4,5) PATCHING 2012
MONTGOMERY COUNTY

F.A.I. RTE.	SECTION	COUNTY	TOTAL SHEETS	SHEET NO.
55	6012349 PATCHING 2012	SANGAMON	6	7
STA.		TO STA.		
FED. ROAD DIST. NO.	ILLINOIS	FED. AID PROJECT		



FAI 55



RAMPS

LEGEND

- ① EX STABILIZED SUB-BASE 4"
- ② EX AGGREGATE SUB-BASE 4"
- ③ EX PCC PAVEMENT 9"
- ④ EX SRPCC PAVEMENT 8"
- ⑤ EX HOT -MIX ASPHALT SURFACE COURSE (VARIABLE THICKNESS)
- ⑥ EX AGGREGAE SHOULDERS
- ⑦ EX HOT-MIX ASPHALT SHOULDERS
- ⑧ EX PIPE UNDERDRAIN

REVISIONS	
NAME	DATE

ILLINOIS DEPARTMENT OF TRANSPORTATION
TYPICAL SECTIONS
 FAI 55 & FAI 72 (I 55, I 72)
 SECTION D6 PATCHING 2012
 SANGAMON COUNTY
 SCALE: _____ DRAWN BY _____
 DATE _____ CHECKED BY _____

