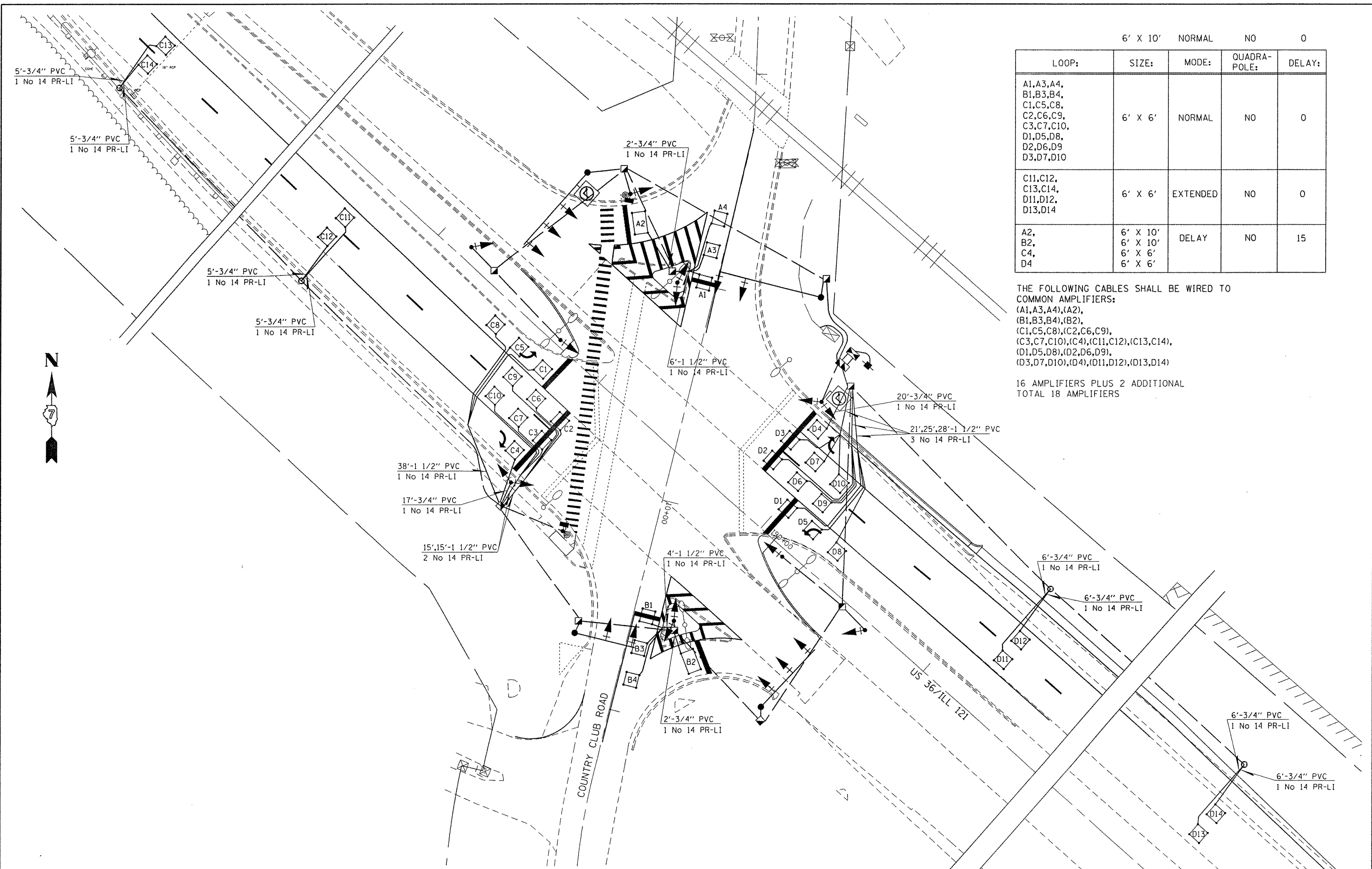


LOOP:	SIZE:	MODE:	QUADRA-POLE:	DELAY:
A1,A3,A4, B1,B3,B4, C1,C5,C8, C2,C6,C9, C3,C7,C10, D1,D5,D8, D2,D6,D9 D3,D7,D10	6' X 6'	NORMAL	NO	0
C11,C12, C13,C14, D11,D12, D13,D14	6' X 6'	EXTENDED	NO	0
A2, B2, C4, D4	6' X 10' 6' X 10' 6' X 6' 6' X 6'	DELAY	NO	15

THE FOLLOWING CABLES SHALL BE WIRED TO COMMON AMPLIFIERS:  
 (A1,A3,A4),(A2),  
 (B1,B3,B4),(B2),  
 (C1,C5,C8),(C2,C6,C9),  
 (C3,C7,C10),(C4),(C11,C12),(C13,C14),  
 (D1,D5,D8),(D2,D6,D9),  
 (D3,D7,D10),(D4),(D11,D12),(D13,D14)

16 AMPLIFIERS PLUS 2 ADDITIONAL  
 TOTAL 18 AMPLIFIERS



FILE NAME =	USER NAME = mcelleanle	DESIGNED -	REVISED -	<b>STATE OF ILLINOIS DEPARTMENT OF TRANSPORTATION</b>	<b>DETECTOR LOOP LAYOUT INTERSECTION US 36 &amp; COUNTRY CLUB ROAD</b>		F.A.P. RTE.	SECTION	COUNTY	TOTAL SHEETS	SHEET NO.
c:\pw\work\puidot\mcelleanle\0273662\	774539-shr-ts-1.dgn	DRAWN -	REVISED -		320	(1372.139-X-2IN)	MACON	39	28		
PLOT SCALE = 40.0000' / in.	CHECKED -	REVISED -	REVISED -		CONTRACT NO. 74539						
PLOT DATE = 4/13/2012	DATE -	REVISED -	REVISED -		ILLINOIS FED. AID PROJECT						

SCALE: 20 SHEET 6 OF 12 SHEETS STA. TO STA.