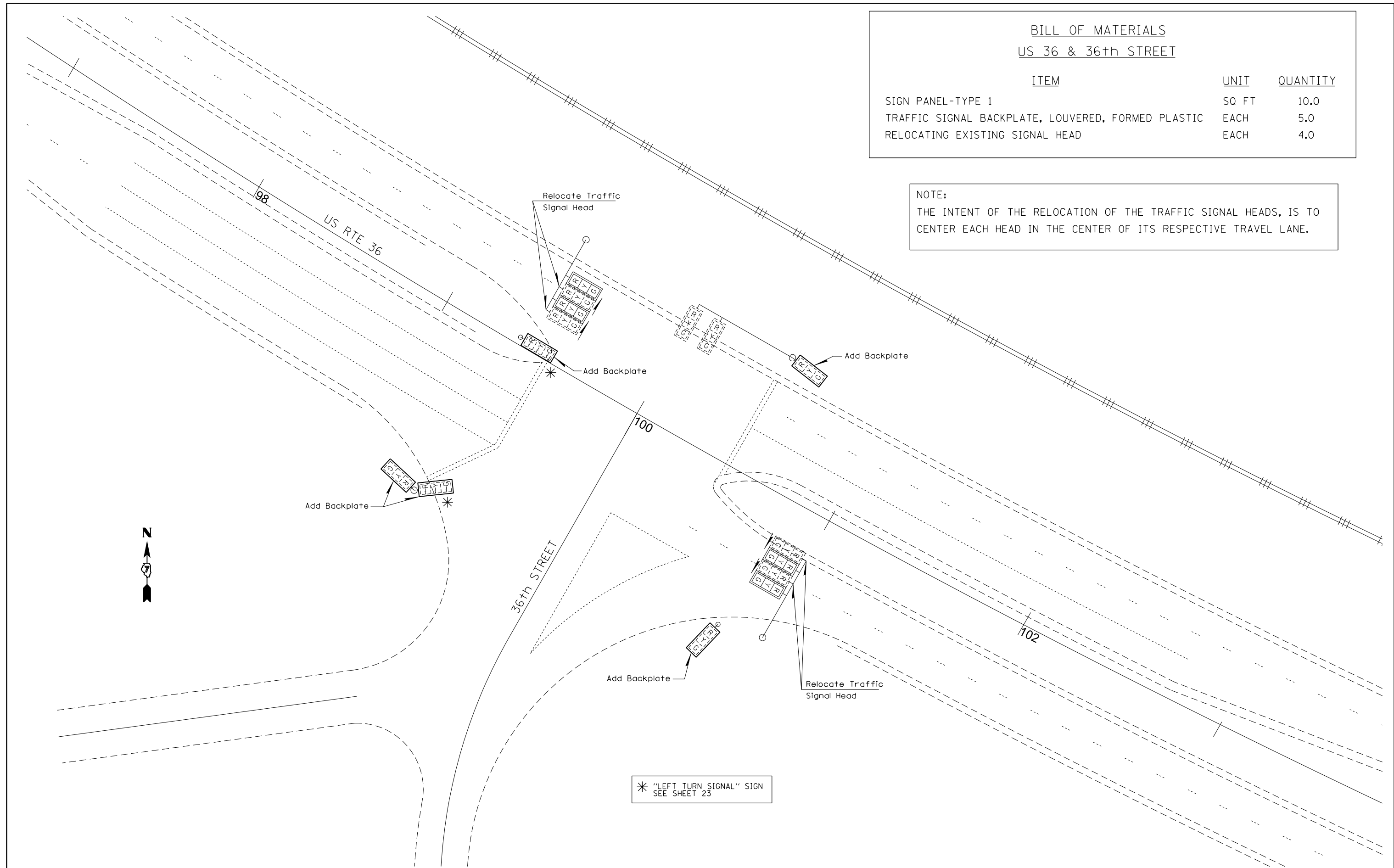


**BILL OF MATERIALS**  
**US 36 & 36th STREET**

ITEM	UNIT	QUANTITY
SIGN PANEL-TYPE 1	SQ FT	10.0
TRAFFIC SIGNAL BACKPLATE, LOUVERED, FORMED PLASTIC	EACH	5.0
RELOCATING EXISTING SIGNAL HEAD	EACH	4.0

**NOTE:**  
THE INTENT OF THE RELOCATION OF THE TRAFFIC SIGNAL HEADS, IS TO CENTER EACH HEAD IN THE CENTER OF ITS RESPECTIVE TRAVEL LANE.



\* "LEFT TURN SIGNAL" SIGN  
SEE SHEET 23

FILE NAME =	USER NAME = steffenmk	DESIGNED -	REVISED -
c:\pwork\pwork\steffenmk\d0273662\0774539-sht-ts.dgn		DRAWN -	REVISED -
	PLOT SCALE = 40.0000' / in.	CHECKED -	REVISED -
	PLOT DATE = 3/27/2012	DATE -	REVISED -

**STATE OF ILLINOIS**  
**DEPARTMENT OF TRANSPORTATION**

**TRAFFIC SIGNAL LAYOUT**  
**INTERSECTION US 36 & 36TH ST**

SCALE: 20      SHEET 9 OF 12 SHEETS      STA.      TO STA.

F.A.P. RTE.	SECTION	COUNTY	TOTAL SHEETS	SHEET NO.
320	(137Z,139-X-2)N	MACON	39	31
CONTRACT NO. 74539				
ILLINOIS FED. AID PROJECT				