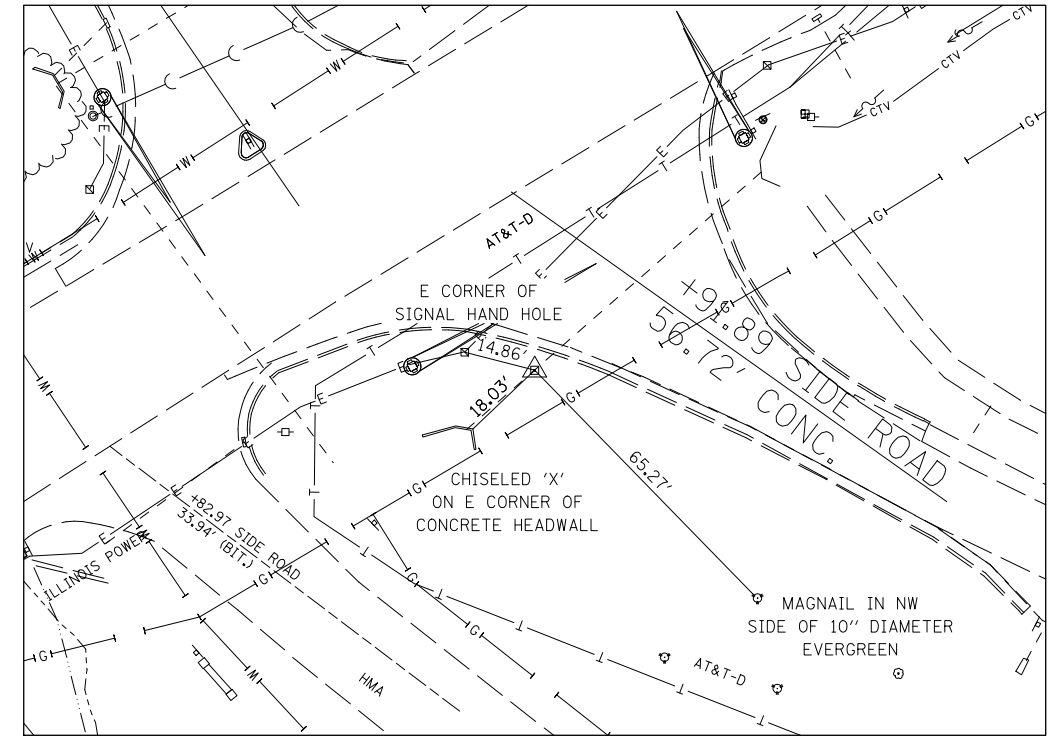
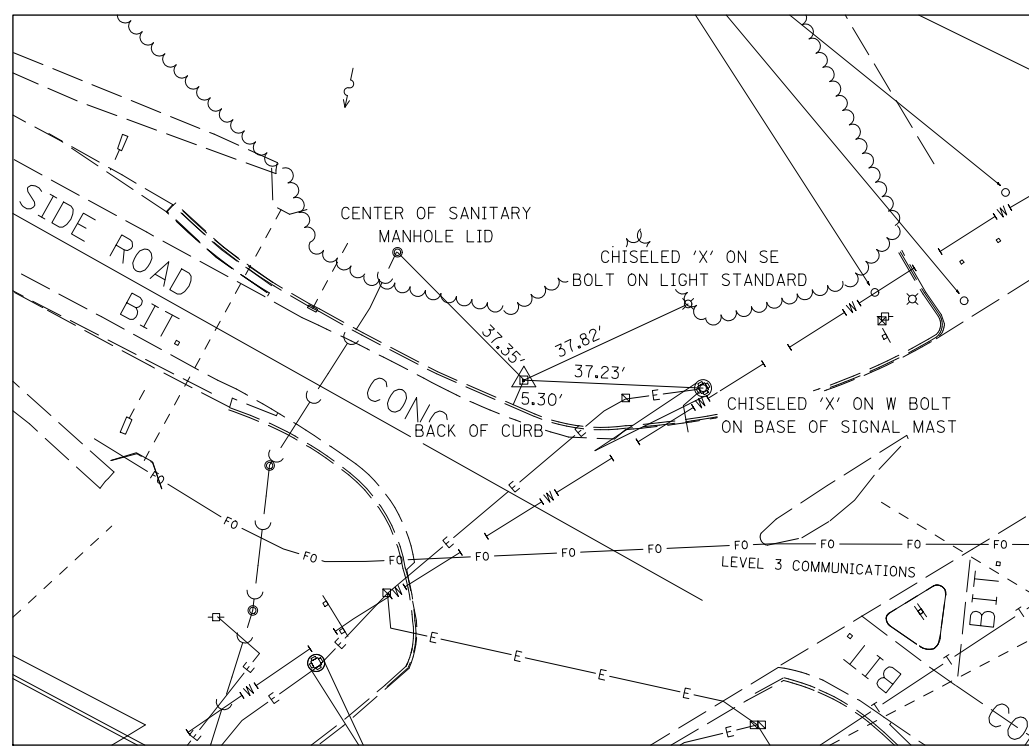


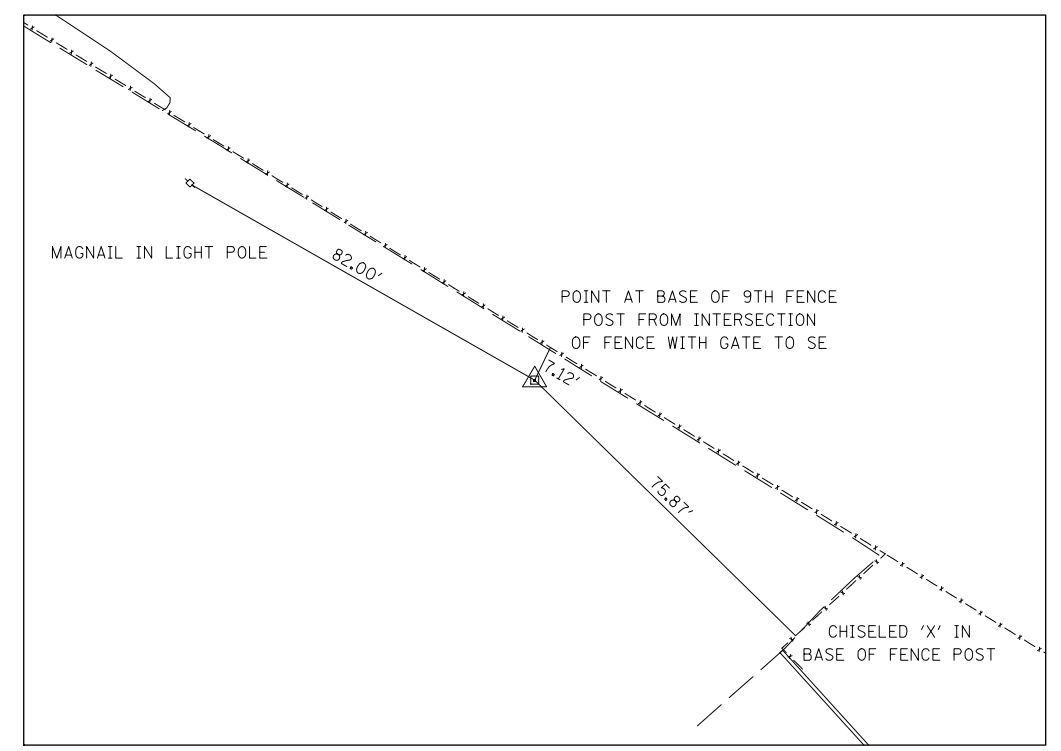
CP 501
IP & CAP
N 670,015.252
E 2,344,741.787



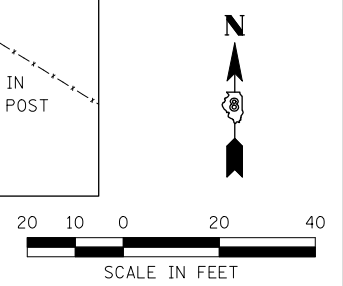
CP 1131
IP & CAP
N 669,462.200
E 2,343,989.673



CP 1132
IP & CAP
N 669,775.707
E 2,344,283.855



CP 90113
MAGNAIL
N 669,055.931
E 2,343,926.762



LAST SAVED = 3/20/2012
 PEN TABLE = V8-HAFC-HA
 PLOT DRIVER = TR-18pdf-Block-Half.plt

FILE NAME =	USER NAME = beriechmann	DESIGNED -	REVISED -
1:\0906600\0906603\cad\1\plans\007-D876D06-Sht-ATB-02.dgn		DRAWN -	REVISED -
	PLOT SCALE = 40.0000' / IN.	CHECKED -	REVISED -
	PLOT DATE = 3/20/2012 4:10:15 PM	DATE -	REVISED -

**STATE OF ILLINOIS
DEPARTMENT OF TRANSPORTATION**

**HORNER &
SHIRIN, INC.
ENGINEERS**

ALIGNMENT, TIES AND BENCHMARKS

SCALE: NONE SHEET NO. 2 OF 2 SHEETS STA. TO STA.

F.A.P. RTE. ①	SECTION 135-N	COUNTY ST. CLAIR	TOTAL SHEETS 206	SHEET NO. 38
			CONTRACT NO. 76D06	
ILLINOIS FED. AID PROJECT				