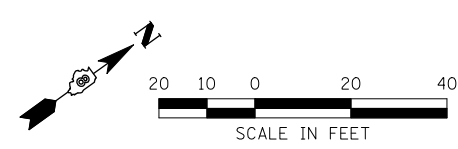
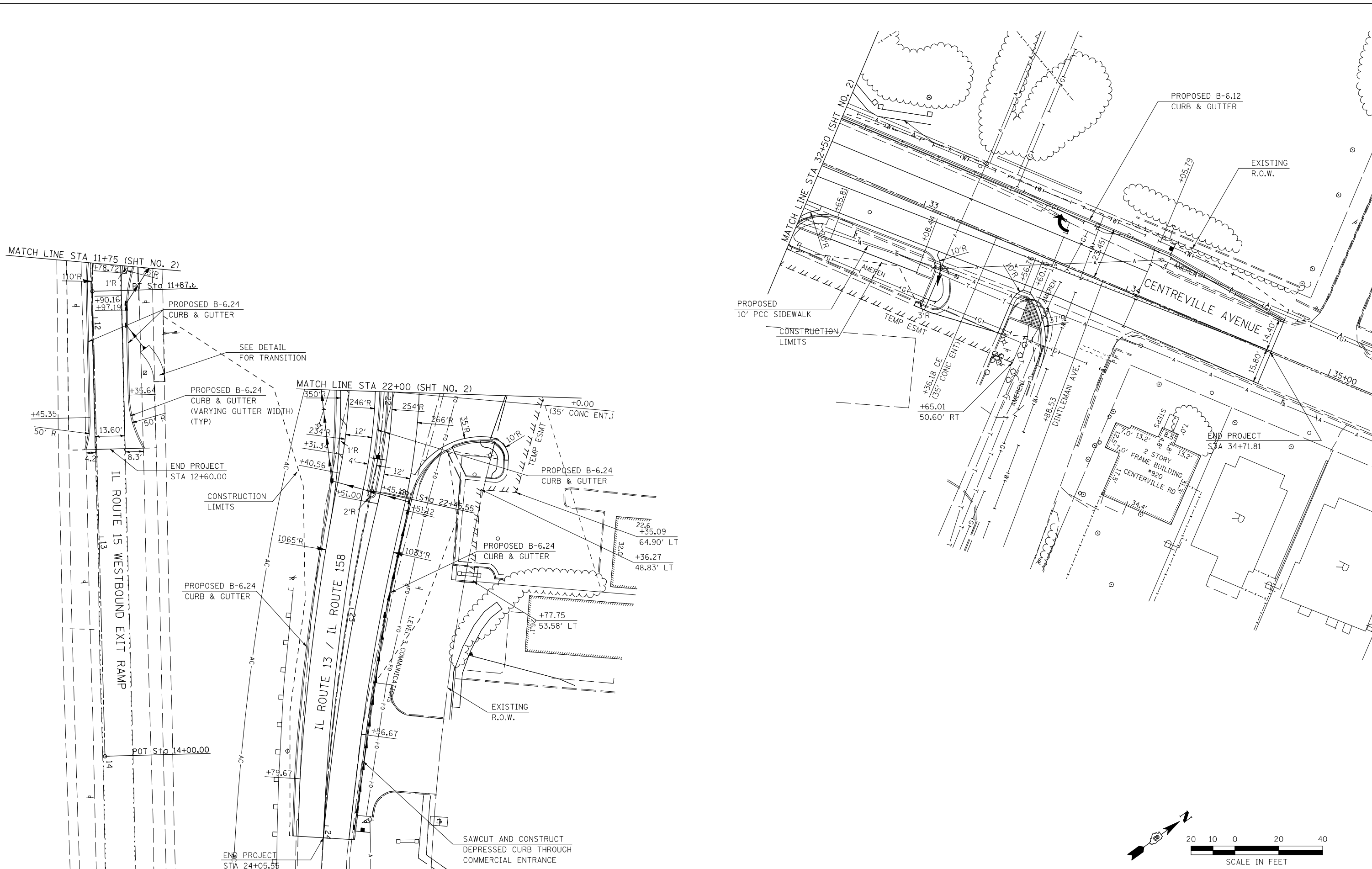


LAST SAVED = 2/20/2012  
 PEN TABLE = V8-HA-14-14  
 PLOT DRIVER = TR-18pdf-Block-Half.plt



FILE NAME =	USER NAME = beriechmann	DESIGNED -	REVISED -
1:\0906600\0906603\cad\plans\013-D876006-Sht-Plan-04.dgn		DRAWN -	REVISED -
		CHECKED -	REVISED -
		DATE -	REVISED -
	PLOT DATE = 3/20/2012 4:10:29 PM		

**STATE OF ILLINOIS  
 DEPARTMENT OF TRANSPORTATION**



**PLAN**  
 IL 15 WESTBOUND EXIT RAMP, IL 13 EAST LEG  
 & IL 158 / CENTERVILLE AVENUE

F.A. RTE.	SECTION	COUNTY	TOTAL SHEETS	SHEET NO.
①	135-N	ST. CLAIR	206	42
			CONTRACT NO. 76D06	
ILLINOIS FED. AID PROJECT				

SCALE: 1" = 20' SHEET NO. 4 OF 4 SHEETS STA. TO STA.