

STAGE B2

- WORK AREA
- TEMPORARY PAVEMENT
- TRAFFIC FLOW DIRECTION ARROWS
- TYPE III BARRICADE
- TEMPORARY PAVEMENT MARKING - SYMBOLS

RAMP CLOSURES
EB IL 15 ENTRANCE

ROAD CLOSURES
NONE

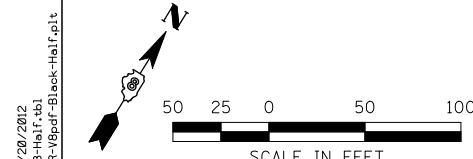
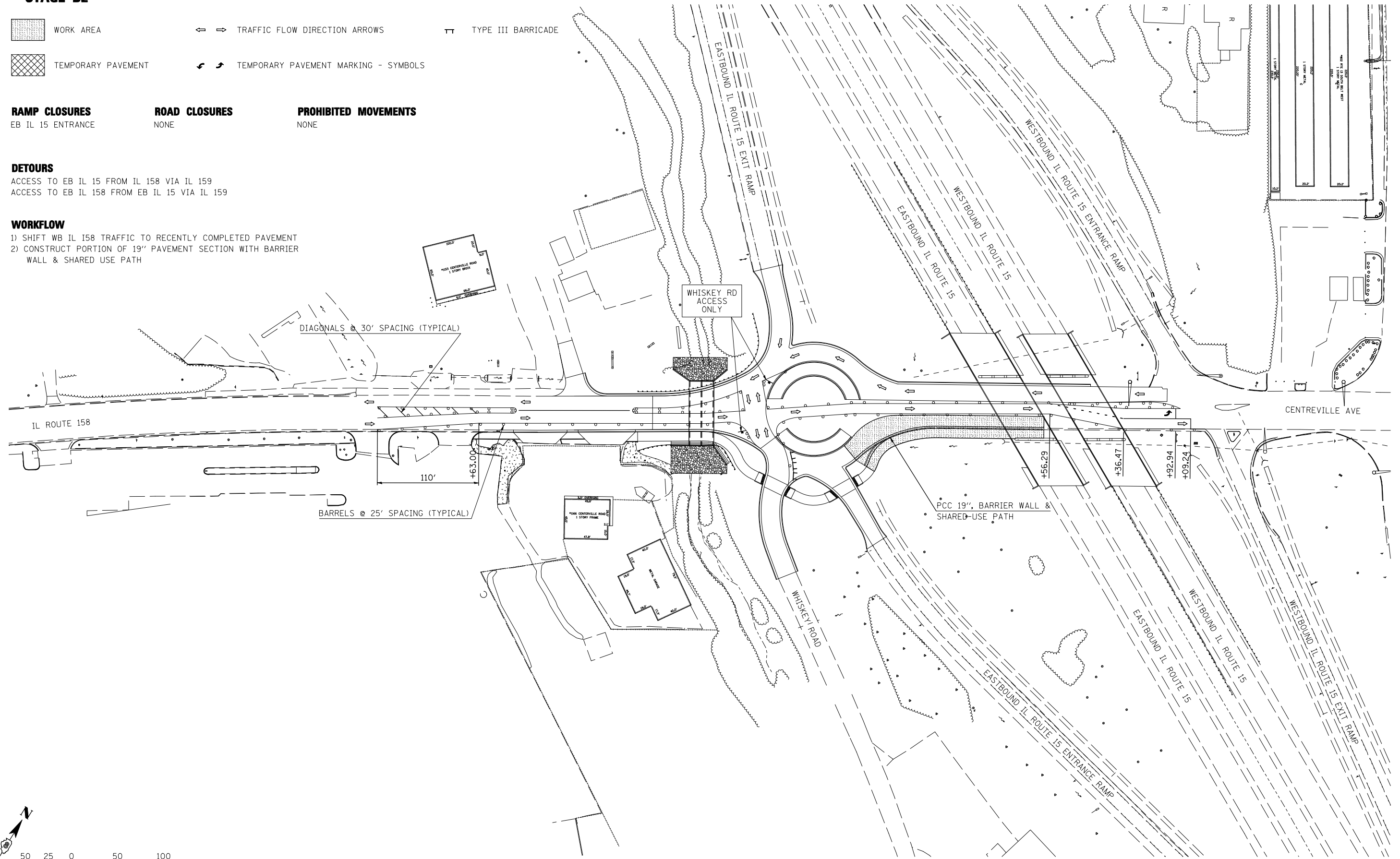
PROHIBITED MOVEMENTS
NONE

DETOURS

ACCESS TO EB IL 15 FROM IL 158 VIA IL 159
ACCESS TO EB IL 158 FROM EB IL 15 VIA IL 159

WORKFLOW

- 1) SHIFT WB IL 158 TRAFFIC TO RECENTLY COMPLETED PAVEMENT
- 2) CONSTRUCT PORTION OF 19" PAVEMENT SECTION WITH BARRIER WALL & SHARED USE PATH



LAST SAVED = 2/20/2012
 PEN TABLE = V8-HA-1F-143
 PLOT DRIVER = TR-18pdf-Block-Half.plt

| | | | |
|---|-------------------------|------------|-----------|
| FILE NAME = | USER NAME = beriechmann | DESIGNED - | REVISED - |
| 1:\0906600\0906603\cad\t\plans\023-D876006-Sht-Staging-B2.dgn | | DRAWN - | REVISED - |
| PLOT SCALE = 100.0000' / IN. | | CHECKED - | REVISED - |
| PLOT DATE = 3/20/2012 4:10:58 PM | | DATE - | REVISED - |

**STATE OF ILLINOIS
DEPARTMENT OF TRANSPORTATION**

**HORNER &
SHIRIN, INC.
ENGINEERS**

**SUGGESTED STAGES OF CONSTRUCTION
AND TRAFFIC CONTROL**
STAGE B2

SCALE: 1"=50'

SHEET NO. 5 OF 23 SHEETS STA. TO STA.

① F.A.P. RTE 809 / F.A.U. RTE 9251 / F.A.U. RTE 9269

| F.A. RTE. | SECTION | COUNTY | TOTAL SHEETS | SHEET NO. |
|---------------------------|---------|-----------|--------------|-----------|
| ① | 135-N | ST. CLAIR | 206 | 55 |
| CONTRACT NO. 76D06 | | | | |
| ILLINOIS FED. AID PROJECT | | | | |