

STAGE B3

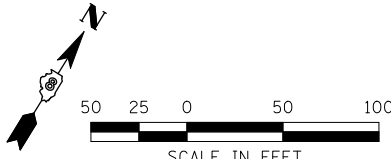
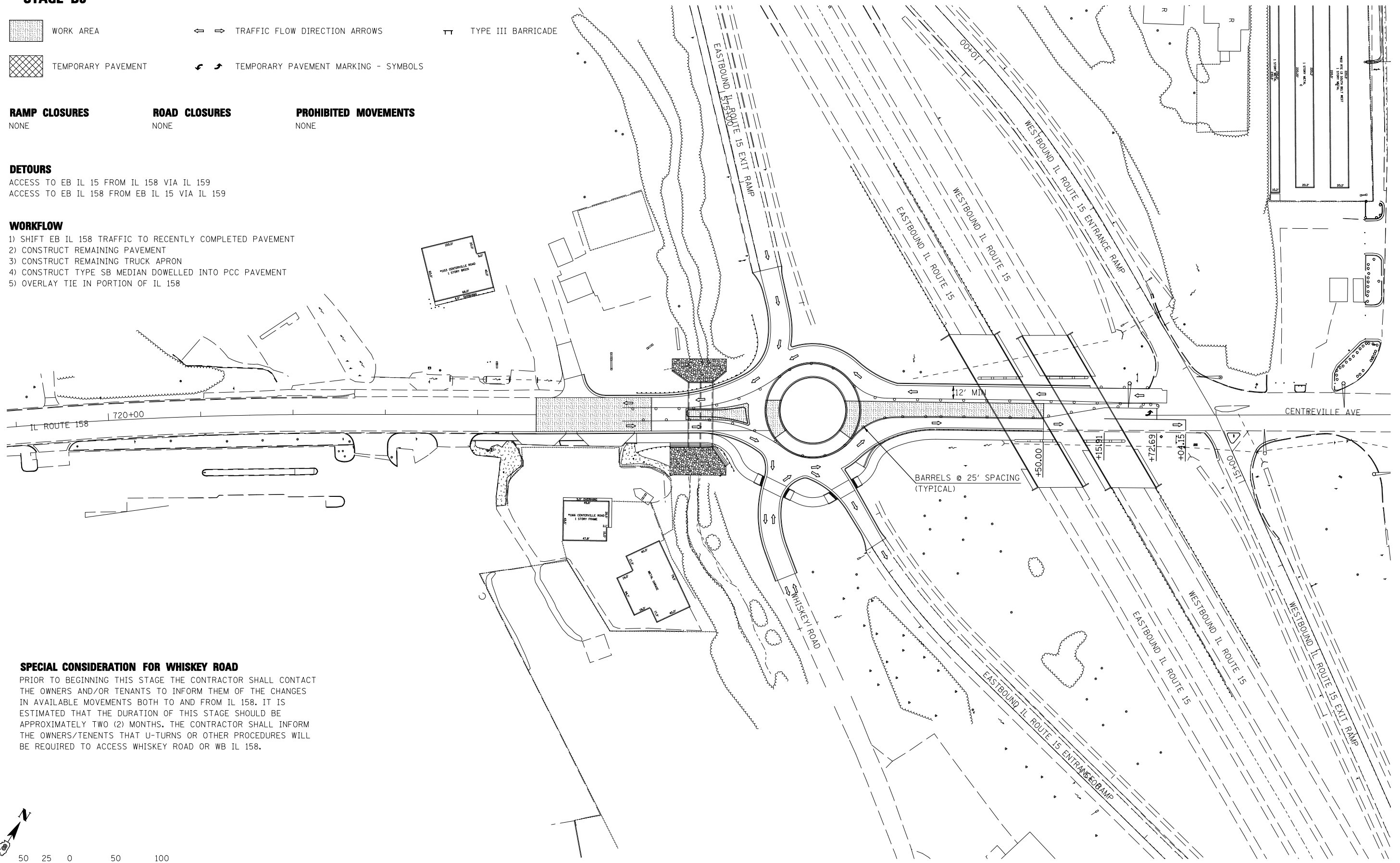
- WORK AREA
- TEMPORARY PAVEMENT
- TRAFFIC FLOW DIRECTION ARROWS
- TYPE III BARRICADE
- TEMPORARY PAVEMENT MARKING - SYMBOLS

RAMP CLOSURES NONE **ROAD CLOSURES** NONE **PROHIBITED MOVEMENTS** NONE

DETOURS
 ACCESS TO EB IL 15 FROM IL 158 VIA IL 159
 ACCESS TO EB IL 158 FROM EB IL 15 VIA IL 159

- WORKFLOW**
- 1) SHIFT EB IL 158 TRAFFIC TO RECENTLY COMPLETED PAVEMENT
 - 2) CONSTRUCT REMAINING PAVEMENT
 - 3) CONSTRUCT REMAINING TRUCK APRON
 - 4) CONSTRUCT TYPE SB MEDIAN DOWELLED INTO PCC PAVEMENT
 - 5) OVERLAY TIE IN PORTION OF IL 158

SPECIAL CONSIDERATION FOR WHISKEY ROAD
 PRIOR TO BEGINNING THIS STAGE THE CONTRACTOR SHALL CONTACT THE OWNERS AND/OR TENANTS TO INFORM THEM OF THE CHANGES IN AVAILABLE MOVEMENTS BOTH TO AND FROM IL 158. IT IS ESTIMATED THAT THE DURATION OF THIS STAGE SHOULD BE APPROXIMATELY TWO (2) MONTHS. THE CONTRACTOR SHALL INFORM THE OWNERS/TENANTS THAT U-TURNS OR OTHER PROCEDURES WILL BE REQUIRED TO ACCESS WHISKEY ROAD OR WB IL 158.



LAST SAVED = 3/20/2012
 PEN TABLE = V8-HA-1F-143
 PLOT DRIVER = TR-18pdf-Block-Half.plt

FILE NAME =	USER NAME = beriechmann	DESIGNED -	REVISED -
1:\0906600\0906603\cad\1\plans\024-D876006-Sht-Staging-B3.dgn		DRAWN -	REVISED -
		CHECKED -	REVISED -
		DATE -	REVISED -
PLOT SCALE = 100.0000' / IN.			
PLOT DATE = 3/20/2012 4:11:03 PM			

**STATE OF ILLINOIS
 DEPARTMENT OF TRANSPORTATION**

**HORNER &
 SHIRN, INC.
 ENGINEERS**

**SUGGESTED STAGES OF CONSTRUCTION
 AND TRAFFIC CONTROL**
 STAGE B3

SCALE: 1"=50' SHEET NO. 6 OF 23 SHEETS STA. TO STA.

① F.A.P. RTE 809 / F.A.U. RTE 9251 / F.A.U. RTE 9269				
F.A. RTE.	SECTION	COUNTY	TOTAL SHEETS	SHEET NO.
①	135-N	ST. CLAIR	206	56
				CONTRACT NO. 76D06
ILLINOIS FED. AID PROJECT				