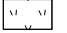
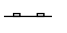

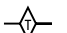


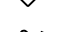
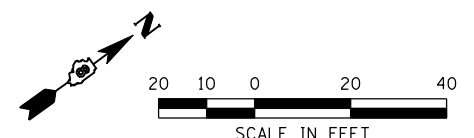


END PROJECT  
STA 34+71.81

**LEGEND**

-  TEMPORARY EROSION CONTROL SEEDING
-  PERIMETER EROSION BARRIER
-  INLET AND PIPE PROTECTION
-  TEMPORARY DITCH CHECK
-  EROSION CONTROL BLANKET
-  INLET FILTER
-  DITCH FLOW



SCALE IN FEET

① F.A.P. RTE 809 / F.A.U. RTE 9269

FILE NAME = ...\\078-0876006-Sht-Eros-004.dgn	USER NAME = CFC...	DESIGNED -	REVISED -
		DRAWN -	REVISED -
	PLOT SCALE = 40.0000' / IN.	CHECKED -	REVISED -
	PLOT DATE = 3/19/2012	DATE -	REVISED -

**STATE OF ILLINOIS  
DEPARTMENT OF TRANSPORTATION**

**HORNER &  
SHIRIN, INC.  
ENGINEERS**

**EROSION AND SEDIMENT CONTROL DETAILS**  
IL 15 WESTBOUND EXIT RAMP, IL 13 EAST LEG  
& IL 158 / CENTREVILLE AVENUE

SCALE: 1" = 20' SHEET NO. 4 OF 4 SHEETS STA. TO STA.

F.A. RTE.	SECTION	COUNTY	TOTAL SHEETS	SHEET NO.
①	135-N	ST. CLAIR	206	78
CONTRACT NO. 76D06				

ILLINOIS FED. AID PROJECT