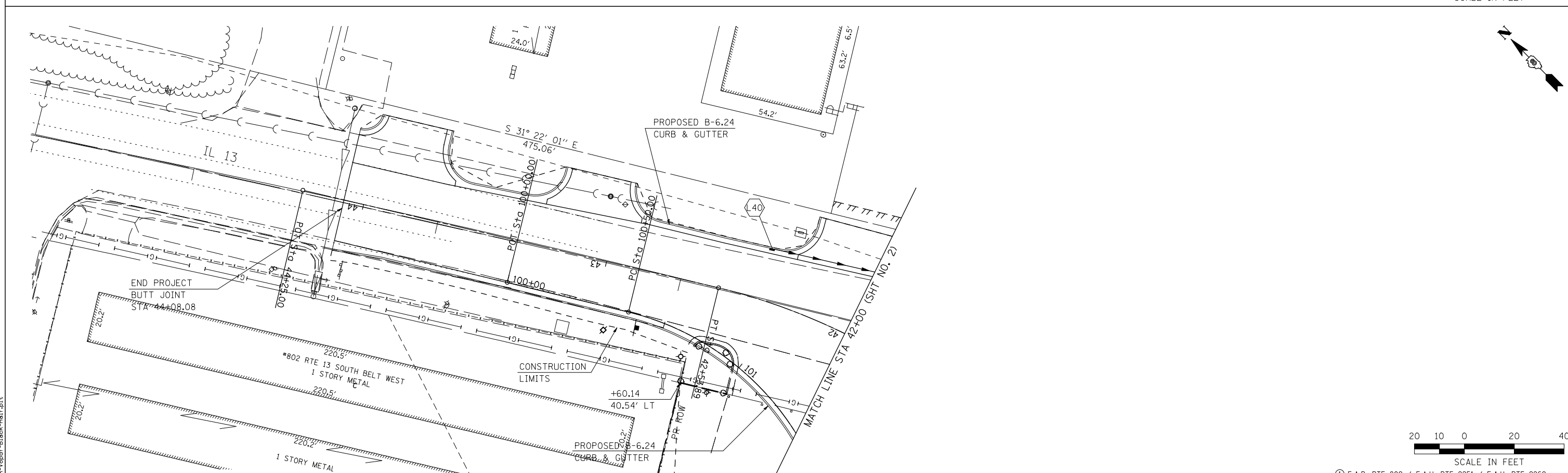


PROP. CURVE C-06  
 PI STA. = 93+47.59  
 $\Delta = 11^\circ 30' 25''$  (LT)  
 $D = 5^\circ 01' 35''$   
 $R = 1,139.88'$   
 $T = 114.85'$   
 $L = 228.93'$   
 $E = 5.77'$   
 P.C. STA = 92+32.74  
 P.T. STA = 94+61.67

PROP. CURVE BYP-03  
 PI STA. = 105+20.42  
 $\Delta = 2^\circ 55' 40''$  (LT)  
 $D = 4^\circ 57' 25''$   
 $R = 1,155.88'$   
 $T = 29.54'$   
 $L = 59.06'$   
 $E = 0.38'$   
 P.C. STA = 104+90.88  
 P.T. STA = 105+49.95

20 10 0 20 40  
 SCALE IN FEET



20 10 0 20 40  
 SCALE IN FEET

LAST SAVED = 2/20/2012  
 PEN TABLE = 96-HA-F-143  
 PLOT DRIVER = TR-18pdf-Block-Half.plt

FILE NAME =	USER NAME = beriechmann	DESIGNED -	REVISED -
1:\0906600\0906603\cad\1\plans\052-D876006-Sht-Drain-03.dgn		DRAWN -	REVISED -
		CHECKED -	REVISED -
		DATE -	REVISED -
PLOT SCALE = 40.0000' / IN.			
PLOT DATE = 3/20/2012 4:12:08 PM			

STATE OF ILLINOIS  
 DEPARTMENT OF TRANSPORTATION

HORNER &  
 SHIRIN, INC  
 ENGINEERS

DRAINAGE AND UTILITIES PLAN  
 IL 15 WESTBOUND ENTRANCE RAMP & IL 13 WEST LEG

SCALE: 1" = 20' SHEET NO. 3 OF 4 SHEETS STA. TO STA.

F.A.P. RTE.	SECTION	COUNTY	TOTAL SHEETS	SHEET NO.
①	135-N	ST. CLAIR	206	81
ILLINOIS FED. AID PROJECT			CONTRACT NO. 76D06	