

A		
POINT NUMBER	NORTHING	EASTING
A1	669428.7965	2343871.3996
A2	669433.6958	2343880.1130
A3	669437.7840	2343889.2354
A4	669441.0271	2343898.6913
A5	669443.3983	2343908.4025
A6	669444.8782	2343918.2889
A7	669445.4544	2343928.2688
A8	669445.1640	2343937.6976
A9	669439.7010	2343950.0219
A10	669431.8697	2343956.1861
A11	669422.3022	2343959.9686
A12	669445.0567	2343944.1082
A13	669442.1571	2343967.0846

B		
POINT NUMBER	NORTHING	EASTING
B1	669407.0287	2343986.3224
B2	669416.5606	2343983.4132
B3	669426.5260	2343983.3084
B4	669436.1169	2343986.0165
B5	669445.4356	2343992.0903
B6	669448.5621	2343997.6810
B7	669449.8410	2344007.5935
B8	669450.0131	2344017.5869
B9	669449.0759	2344027.5377
B10	669447.0412	2344037.3233
B11	669443.9340	2344046.8229
B12	669440.4375	2344054.6624

C		
POINT NUMBER	NORTHING	EASTING
C1	669454.5951	2344061.8023
C2	669456.2401	2344058.8508
C3	669461.1084	2344050.1159
C4	669465.9622	2344041.3732
C5	669470.4917	2344032.4590
C6	669474.0444	2344022.9922
C7	669474.5689	2344023.3287
C8	669483.3644	2344028.0708
C9	669492.9787	2344031.5787
C10	669502.4787	2344034.6920
C11	669511.6998	2344038.5545
C12	669520.5826	2344043.1416
C13	669529.0705	2344048.4239
C14	669537.1091	2344054.3676
C15	669544.6469	2344060.9347
C16	669551.6359	2344068.0832
C17	669558.0313	2344075.7673
C18	669563.7912	2344083.9372
C19	669566.1092	2344087.6621

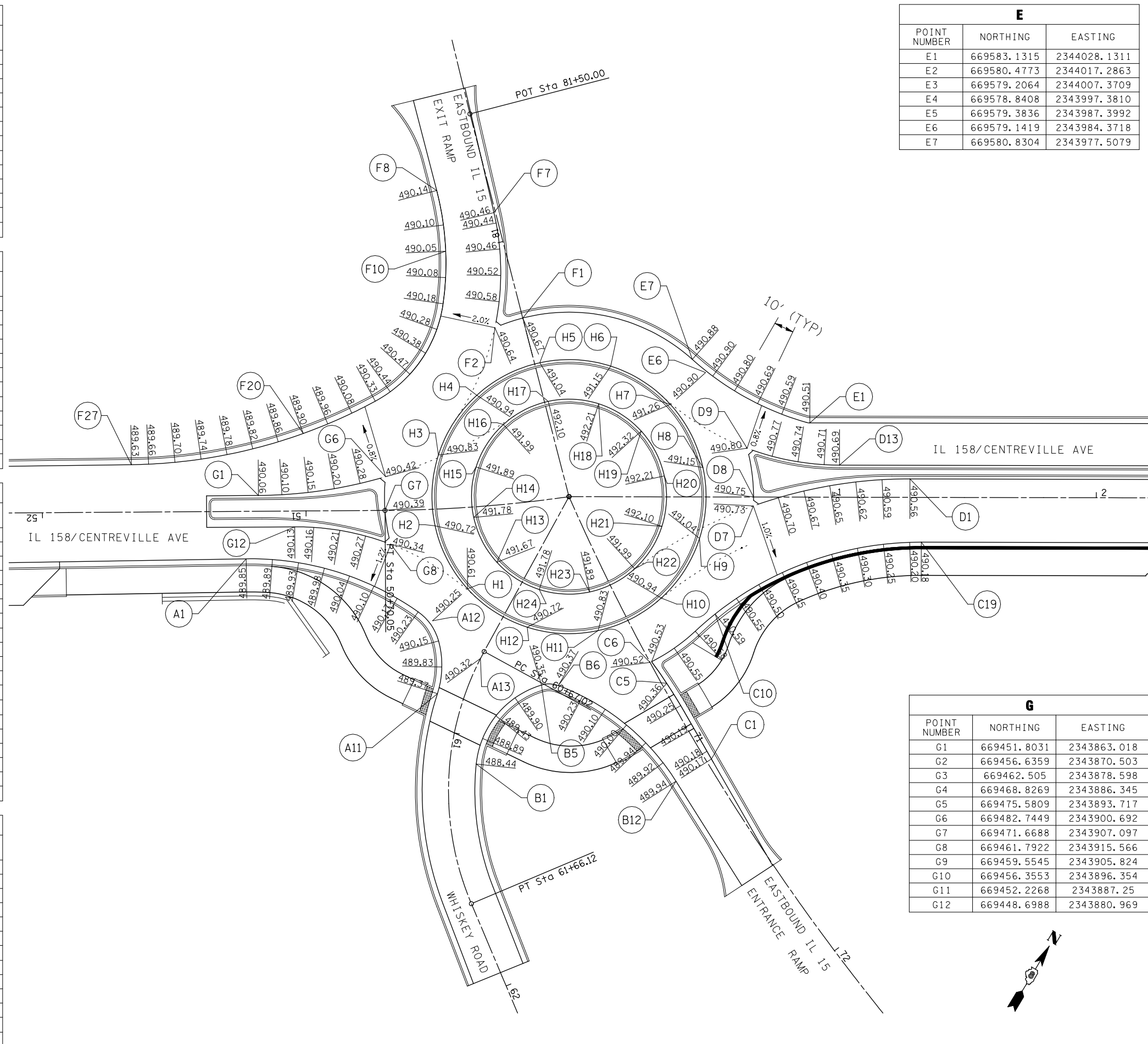
D		
POINT NUMBER	NORTHING	EASTING
D1	669584.4794	2344071.6198
D2	669578.7705	2344062.6996
D3	669572.8950	2344054.6094
D4	669566.5673	2344046.8677
D5	669559.8080	2344039.4999
D6	669552.6391	2344032.5300
D7	669545.0840	2344025.9807
D8	669548.0298	2344024.3150
D9	669562.6429	2344012.6689
D10	669564.9280	2344022.4000
D11	669568.1732	2344031.8544
D12	669572.3461	2344040.9375
D13	669575.1943	2344046.0314

E		
POINT NUMBER	NORTHING	EASTING
E1	669583.1315	2344028.1311
E2	669580.4773	2344017.2863
E3	669579.2064	2344007.3709
E4	669578.8408	2343997.3810
E5	669579.3836	2343987.3992
E6	669579.1419	2343984.3718
E7	669580.8304	2343977.5079

F		
POINT NUMBER	NORTHING	EASTING
F1	669561.1500	2343914.2997
F2	669552.5414	2343907.1050
F3	669561.8284	2343903.4078
F4	669570.7004	2343898.8031
F5	669579.0684	2343893.3356
F6	669586.8488	2343887.0600
F7	669589.8082	2343884.3088
F8	669585.8100	2343861.4010
F9	669575.9228	2343870.3138
F10	669567.8313	2343876.1840
F11	669559.2403	2343881.2953
F12	669550.2206	2343885.6057
F13	669540.6843	2343888.5592
F14	669530.7511	2343889.5594
F15	669520.8174	2343888.5653
F16	669511.2787	2343885.6191
F17	669505.2979	2343882.6060
F18	669496.8192	2343877.3057
F19	669488.6161	2343871.5883
F20	669480.7091	2343865.4681
F21	669473.1177	2343858.9603
F22	669465.8611	2343852.0812
F23	669458.9574	2343844.8481
F24	669452.4239	2343837.2790
F25	669446.2767	2343829.3928
F26	669440.5315	2343821.2092
F27	669436.9920	2343815.6958

H		
POINT NUMBER	NORTHING	EASTING
H1	669462.2963	2343949.2850
H2	669476.4461	2343926.3870
H3	669500.1493	2343913.6318
H4	669527.0544	2343914.4370
H5	669549.9523	2343928.5868
H6	669562.7076	2343952.2900
H7	669561.9024	2343979.1951
H8	669547.7525	2344002.0930
H9	669524.0494	2344014.8483
H10	669497.1443	2344014.0431
H11	669474.2463	2343999.8932
H12	669461.4911	2343976.1901
H13	669476.6625	2343953.5989
H14	669486.7307	2343937.3062
H15	669503.5964	2343928.2303
H16	669522.7404	2343928.8032
H17	669539.0332	2343938.8714
H18	669548.1091	2343955.7371
H19	669547.5362	2343974.8811
H20	669537.4680	2343991.1739
H21	669520.6023	2344000.2497
H22	669501.4582	2343999.6768
H23	669485.1655	2343989.6086
H24	669476.0896	2343972.7430

G		
POINT NUMBER	NORTHING	EASTING
G1	669451.8031	2343863.018
G2	669456.6359	2343870.503
G3	669462.505	2343878.598
G4	669468.8269	2343886.345
G5	669475.5809	2343893.717
G6	669482.7449	2343900.692
G7	669471.6688	2343907.097
G8	669461.7922	2343915.566
G9	669459.5545	2343905.824
G10	669456.3553	2343896.354
G11	669452.2268	2343887.25
G12	669448.6988	2343880.969



FILE NAME = \\0906600\0906603\cad\plans\060-D876006-Sht-Intersec-01.dgn
 USER NAME = beriechmann
 PLOT SCALE = 40.0000' / IN.
 PLOT DATE = 3/20/2012

DESIGNED -
 DRAWN -
 CHECKED -
 DATE -

REVISED -
 REVISED -
 REVISED -
 REVISED -

STATE OF ILLINOIS
DEPARTMENT OF TRANSPORTATION

HORNER & SHIPP, INC.
ENGINEERS

INTERSECTION ELEVATIONS
 SOUTHERN ROUNDABOUT

SCALE: SHEET NO. 1 OF 3 SHEETS STA. TO STA.

F.A.P. RTE 809 / F.A.U. RTE 9251 / F.A.U. RTE 9269

F.A. RTE.	SECTION	COUNTY	TOTAL SHEETS	SHEET NO.
①	135-N	ST. CLAIR	206	99

CONTRACT NO. 76D06
 ILLINOIS FED. AID PROJECT