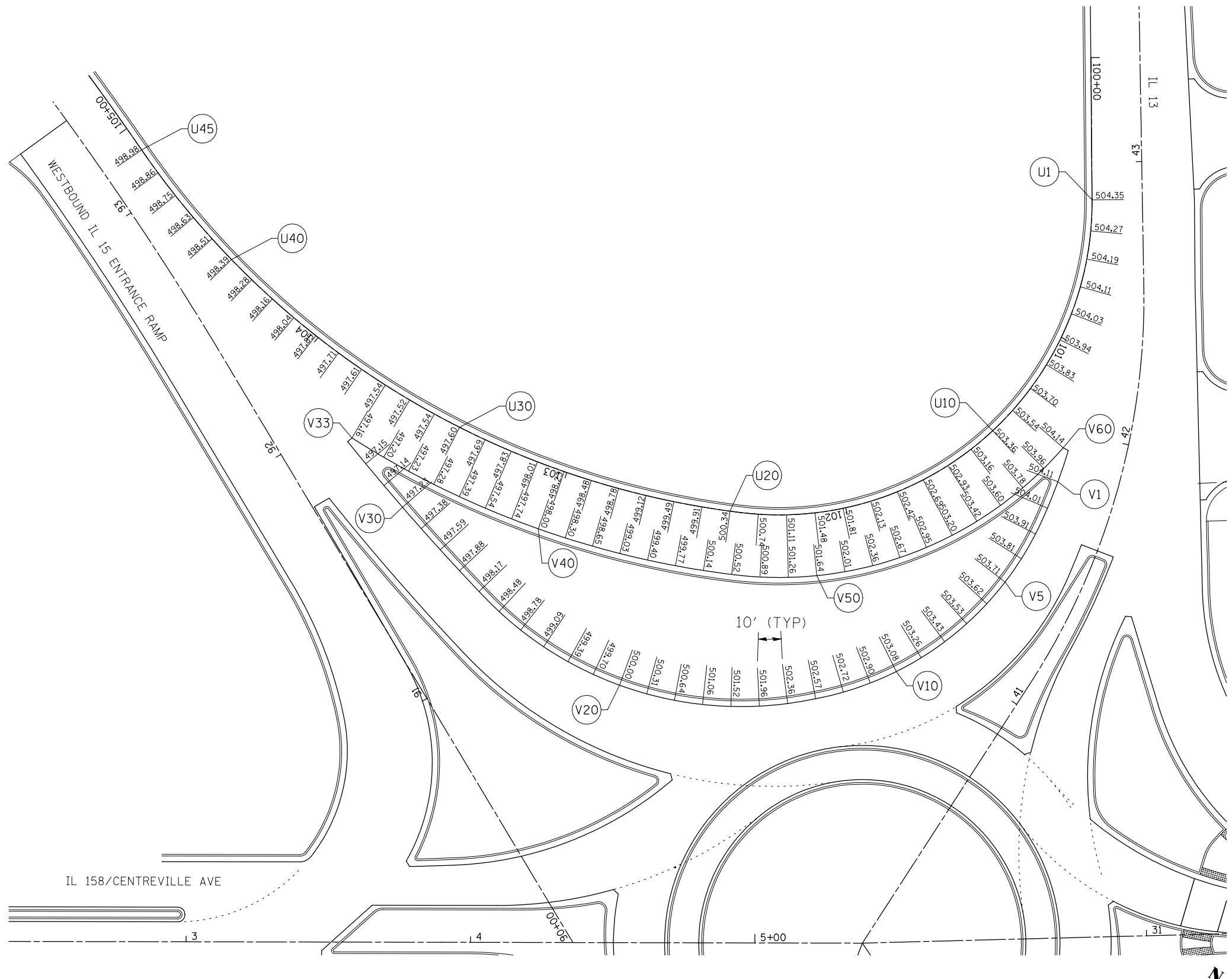


U		
POINT NUMBER	NORTHING	EASTING
U1	670053.7803	2344360.3927
U2	670044.1503	2344365.6338
U3	670034.9550	2344369.5552
U4	670025.4416	2344372.6257
U5	670015.6888	2344374.8198
U6	670005.7771	2344376.1194
U7	669995.7883	2344376.5139
U8	669985.8049	2344375.9999
U9	669975.9095	2344374.5817
U10	669966.1836	2344372.2710
U11	669956.7077	2344369.0869
U12	669947.5600	2344365.0556
U13	669938.8160	2344360.2106
U14	669930.5480	2344354.5917
U15	669922.8242	2344348.2455
U16	669915.7085	2344341.2242
U17	669909.2595	2344333.5859
U18	669903.5307	2344325.3938
U19	669898.5692	2344316.7153
U20	669894.3705	2344307.6421
U21	669890.5668	2344298.3943
U22	669887.0734	2344289.0249
U23	669883.8942	2344279.5442
U24	669881.0327	2344269.9629
U25	669878.4921	2344260.2916
U26	669876.2752	2344250.5409
U27	669874.3846	2344240.7218
U28	669872.8222	2344230.8451
U29	669871.5899	2344220.9218
U30	669870.6889	2344210.9630
U31	669870.1204	2344200.9797
U32	669869.8848	2344190.9830
U33	669869.9826	2344180.9840
U34	669870.4136	2344170.9938
U35	669871.1772	2344161.0235
U36	669872.2727	2344151.0842
U37	669873.6989	2344141.1869
U38	669875.4541	2344131.3427
U39	669877.5364	2344121.5624
U40	669879.9435	2344111.8570
U41	669882.6727	2344102.2371
U42	669885.7210	2344092.7136
U43	669889.0850	2344083.2970
U44	669892.7610	2344073.9977
U45	669896.7104	2344064.9018

V		
POINT NUMBER	NORTHING	EASTING
V1	669962.6270	2344401.1443
V2	669952.7631	2344402.7820
V3	669942.8245	2344403.8677
V4	669932.8304	2344404.0920
V5	669922.8572	2344403.4080
V6	669912.9874	2344401.8214
V7	669903.3023	2344399.3454
V8	669893.8820	2344396.0003
V9	669884.8043	2344391.8138
V10	669876.1441	2344386.8205
V11	669867.9730	2344381.0616
V12	669860.3584	2344374.5847
V13	669853.3633	2344367.4433
V14	669846.8384	2344359.8685
V15	669840.9290	2344351.8047
V16	669835.6829	2344343.2944
V17	669831.1337	2344334.3920
V18	669827.3104	2344325.1546
V19	669824.2376	2344315.6413
V20	669821.9349	2344305.9127
V21	669820.4170	2344296.0313
V22	669819.6936	2344286.0602
V23	669819.7694	2344276.0631
V24	669820.6438	2344266.1041
V25	669822.3114	2344256.2468
V26	669824.7384	2344246.5396
V27	669827.4506	2344236.9144
V28	669830.2757	2344227.3218
V29	669833.2136	2344217.7631
V30	669836.2636	2344208.2396
V31	669839.4255	2344198.7527
V32	669842.6988	2344189.3036
V33	669847.9865	2344180.5085
V34	669847.9109	2344193.4990
V35	669848.2084	2344203.4942
V36	669848.8162	2344213.4753
V37	669849.7336	2344223.4327
V38	669850.9597	2344233.3568
V39	669852.4934	2344243.2381
V40	669854.3332	2344253.0670
V41	669856.4773	2344262.8340
V42	669858.9236	2344272.5297
V43	669861.6698	2344282.1448
V44	669864.7133	2344291.6700
V45	669868.0510	2344301.0961
V46	669871.6798	2344310.4140
V47	669875.5963	2344319.6148
V48	669879.9612	2344328.6092
V49	669884.9925	2344337.2485
V50	669890.6630	2344345.4817
V51	669896.9407	2344353.2627
V52	669903.7893	2344360.5462
V53	669911.1696	2344367.2905
V54	669919.0391	2344373.4569
V55	669927.3527	2344379.0099
V56	669936.0629	2344383.9178
V57	669945.1194	2344388.1524
V58	669954.4705	2344391.6894
V59	669964.0625	2344394.5085
V60	669973.8404	2344396.5936



FILE NAME =	USER NAME = beriechmann	DESIGNED -	REVISED -
\\0906600\0906603\cad\plans\065-D876006-Sht-Intersec-06.dgn		DRAWN -	REVISED -
	PLOT SCALE = 40.0000' / IN.	CHECKED -	REVISED -
	PLOT DATE = 3/20/2012	DATE -	REVISED -

**STATE OF ILLINOIS
DEPARTMENT OF TRANSPORTATION**

**HORNER &
SHIRIN, INC.
ENGINEERS**

**INTERSECTION ELEVATIONS
NORTHERN ROUNDABOUT**

SCALE: SHEET NO. 3 OF 7 SHEETS STA. TO STA.

① F.A.P. RTE 809 / F.A.U. RTE 9251 / F.A.U. RTE 9269

F.A. RTE.	SECTION	COUNTY	TOTAL SHEETS	SHEET NO.
①	135-N	ST. CLAIR	206	104

CONTRACT NO. 76D06
ILLINOIS FED. AID PROJECT