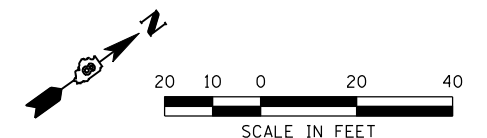


PAVEMENT MARKING LEGEND

- (A) PREFORMED PLASTIC PAVEMENT MARKING TYPE B - LETTERS AND SYMBOLS
- (B) PREFORMED PLASTIC PAVEMENT MARKING TYPE B - LINE 4" WHITE
- (C) PREFORMED PLASTIC PAVEMENT MARKING TYPE B - LINE 4" YELLOW
- (D) PREFORMED PLASTIC PAVEMENT MARKING TYPE B - LINE 4" YELLOW 10' - 30' - 10' SKIP DASH
- (E) PREFORMED PLASTIC PAVEMENT MARKING TYPE B - LINE 6" WHITE
- (F) PREFORMED PLASTIC PAVEMENT MARKING TYPE B - LINE 12" WHITE 3' - 3' SKIP DASH
- (G) PREFORMED PLASTIC PAVEMENT MARKING TYPE B - LINE 8" WHITE
- (H) PREFORMED PLASTIC PAVEMENT MARKING TYPE B - LINE 12" WHITE
- (I) PREFORMED PLASTIC PAVEMENT MARKING TYPE B - LINE 12" YELLOW
- (J) PREFORMED PLASTIC PAVEMENT MARKING TYPE B - LINE 8" YELLOW
- (K) PREFORMED PLASTIC PAVEMENT MARKING TYPE B - LINE 4" WHITE 2' - 6' - 2' SKIP DASH
- (L) RAISED REFLECTIVE PAVEMENT MARKER - TWO WAY AMBER

NOTE:
 PRISMATIC CURB REFLECTORS - 3 EACH AT MEDIAN NOSES AND 2 EACH AT ALL 4 CORNERS OF CROSS WALK THRU MEDIANS. 20' SPACING ON TANGENT, 10' SPACING ON CURVES ON SPLITTER & MEDIAN ISLANDS
 ALL MEDIAN CURBS TO BE PAINTED YELLOW



FILE NAME =	USER NAME = CFC...	DESIGNED -	REVISED -
...\\112-D876D06-Sh1-PMK-004.dgn		DRAWN -	REVISED -
	PLOT SCALE = 40.0000' / IN.	CHECKED -	REVISED -
	PLOT DATE = 3/20/2012	DATE -	REVISED -

STATE OF ILLINOIS
DEPARTMENT OF TRANSPORTATION

HORNER & SHIRIN, INC.
ENGINEERS

PAVEMENT MARKING DETAILS

IL 15 WESTBOUND EXIT RAMP, IL 13 EAST LEG
 & IL 158 / CENTREVILLE AVENUE

SCALE: 1" = 20' SHEET NO. 4 OF 4 SHEETS STA. TO STA.

① F.A.P. RTE 809 / F.A.U. RTE 9269			
F.A. RTE.	SECTION	COUNTY	TOTAL SHEETS
①	135-N	ST. CLAIR	206
CONTRACT NO. 76D06			SHEET NO. 112
ILLINOIS FED. AID PROJECT			